

APP CRS	Rwy Idg	4005
227°	TDZE	12
	Apt Elev	13

RNAV (GPS) RWY 23

DARE COUNTY RGNL (MQI)

RNP APCH - GPS.

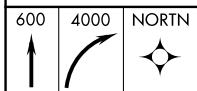
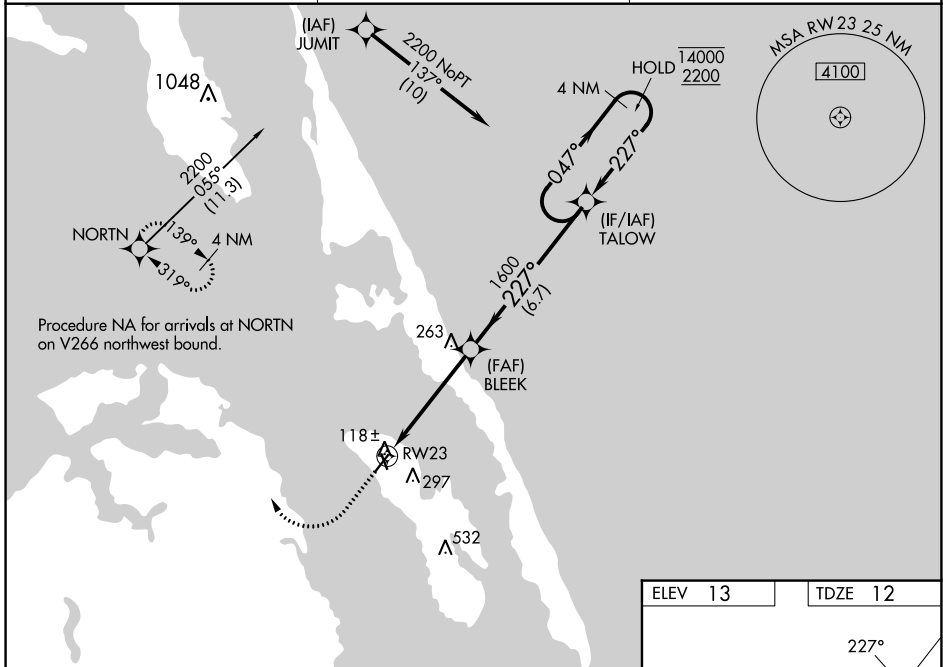
⚠
⚠ Circling Rwy 17, 35 NA at night. Rwy 23 helicopter visibility reduction below 1 SM NA. Straight-in/Circling Rwy 23 NA at night.

MISSED APPROACH: Climb to 600 then climbing right turn to 4000 direct NORTN and hold, continue climb-in-hold to 4000.

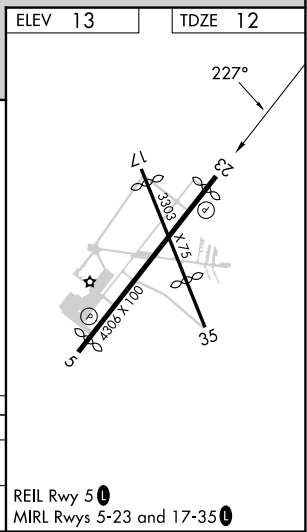
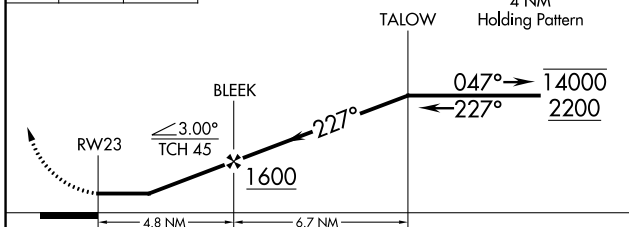
AWOS-3
128.275

CHERRY POINT APP CON
124.725 350.35

UNICOM
122.8(CTAF) 0



VGSI and descent angles not coincident (VGSI Angle 4.00/TCH 31).



CATEGORY	A	B	C	D
LNVA MDA	520-1	508 (600-1)	520-1 ³ / ₈ 508 (600-1 ³ / ₈)	NA
C CIRCLING	600-1	587 (600-1)	600-1 ¹ / ₂ 587 (600-1 ¹ / ₂)	NA

REIL Rwy 5 0
MRL Rwy 5-23 and 17-35 0

SE-2, 03 OCT 2024 to 31 OCT 2024

SE-2, 03 OCT 2024 to 31 OCT 2024