

APP CRS	Rwy Idg	3013
167°	TDZE	13
	Apt Elev	13

RNAV (GPS) RWY 17

DARE COUNTY RGNL (MQI)

RNP APCH - GPS.

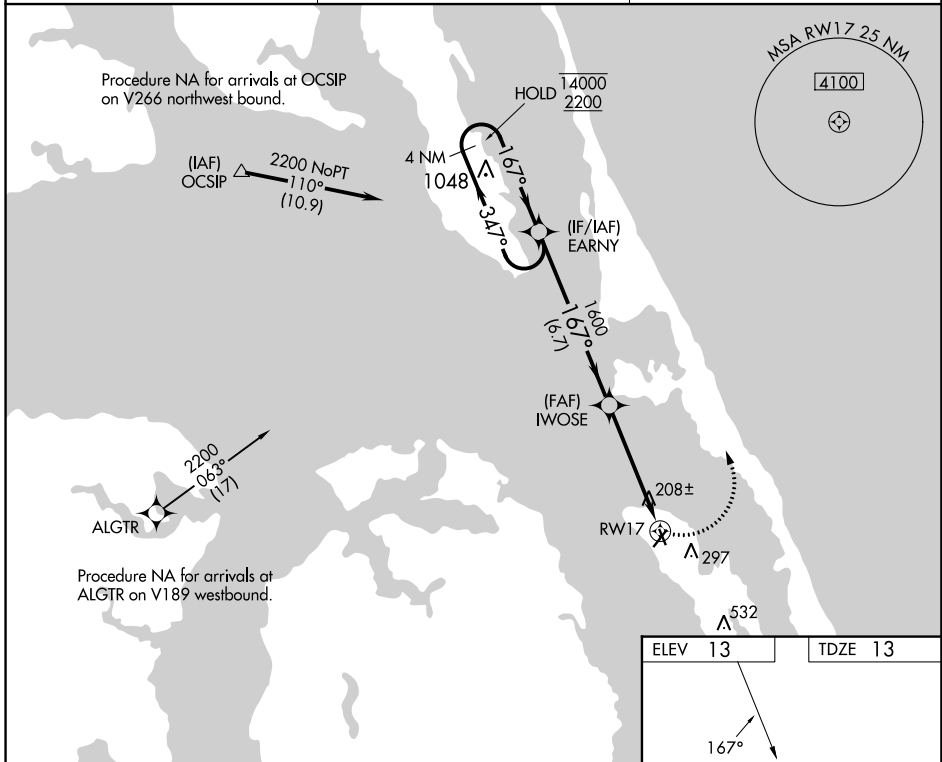
MISSED APPROACH: Climbing left turn to 2200 direct EARNY and hold.

⚠ Circling Rwy 23, 35 NA at night. Rwy 17 helicopter visibility reduction below 1 SM NA. Straight-in and Circling Rwy 17 NA at night.

AWOS-3
128.275

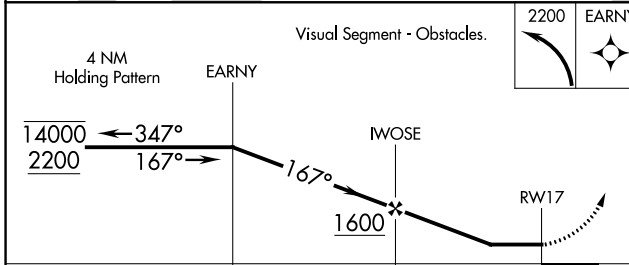
CHERRY POINT APP CON
124.725 350.35

UNICOM
122.8(CTAF) 0

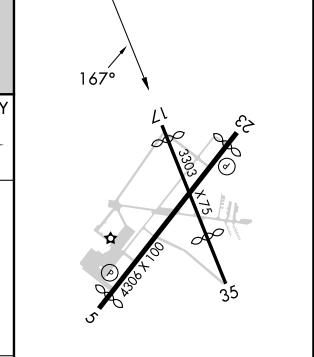


SE-2, 05 SEP 2024 to 03 OCT 2024

SE-2, 05 SEP 2024 to 03 OCT 2024



ELEV	13	TDZE	13
------	-----------	------	-----------



CATEGORY	A	B	C	D
LNAV MDA	460-1	447 (500-1)	460-1 ³ / ₈ 447 (500-1 ³ / ₈)	NA
C CIRCLING	600-1	587 (600-1)	600-1 ¹ / ₂ 587 (600-1 ¹ / ₂)	NA

REIL Rwy 5 **0**
MIRL Rwy 5-23 and 17-35 **0**