

WAAS CH <b>82311</b> <b>W22A</b>	APP CRS <b>218°</b>	Rwy Idg TDZE <b>1025</b> Apt Elev <b>1025</b>	<b>6000</b> <b>1025</b> <b>1025</b>
--	------------------------	---	---

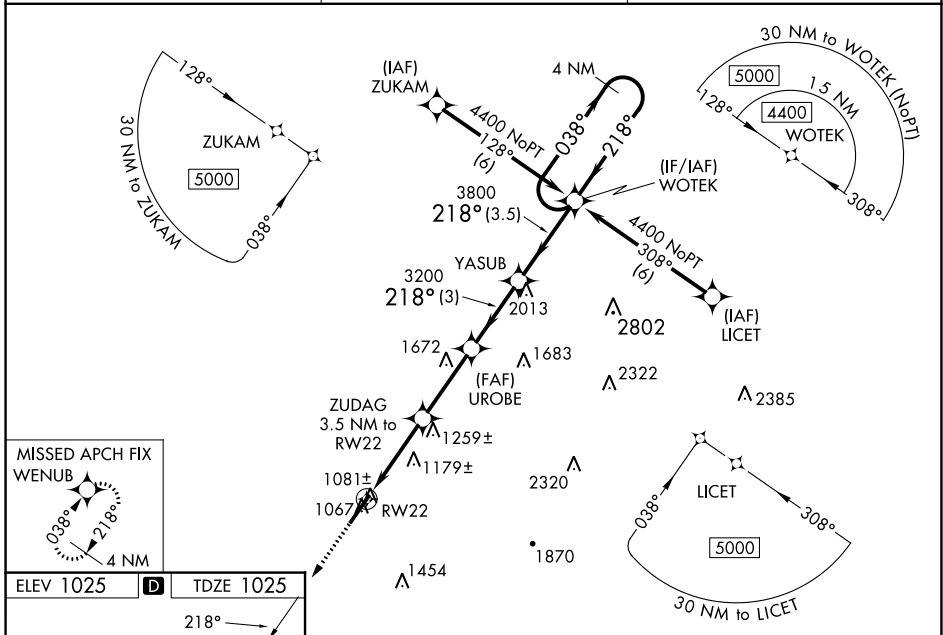
# RNAV (GPS) RWY 22

UPPER CUMBERLAND RGNL (SRB)

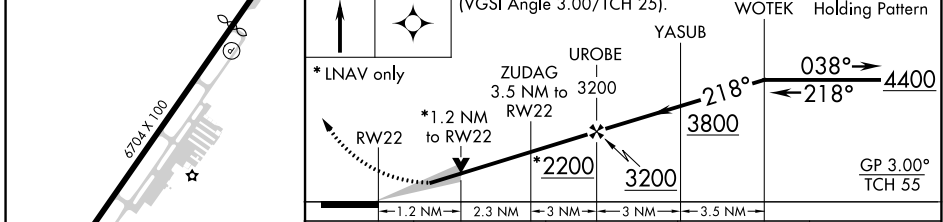
**⚠** Baro-VNAV NA when using Crossville altimeter setting. For uncompensated Baro-VNAV systems, LNAV/VNAV NA below -17°C (2°F) or above 54°C (130°F). DME/DME RNP-0.3 NA. When local altimeter setting not received, use Crossville altimeter setting and increase LPV DA to 1447 feet, LNAV/VNAV DA to 1633 feet, increase LPV and LNAV/VNAV visibility 3/4 SM. Increase all MDA 180 feet and LNAV Cat C visibility 1/4 SM, Cat D visibility 1/2 SM. Increase Circling Cat C visibility 3/4 SM and Circling Cat D visibility 1/4 SM. VDP NA when using Crossville altimeter setting.

**MISSED APPROACH:**  
Climb to 4000 direct WENUB and hold.

AWOS-3P <b>128.25</b>	MEMPHIS CENTER <b>132.9 290.3</b>	UNICOM <b>122.975 (CTAF)</b>
--------------------------	--------------------------------------	---------------------------------



ELEV 1025	<b>D</b>	TDZE 1025
-----------	----------	-----------



CATEGORY	A	B	C	D
LPV DA		1275-3/4	250 (300-3/4)	
LNAV/VNAV DA		1461-1 1/2	436 (500-1 1/2)	
LNAV MDA	1440-1	415 (500-1)	1440-1 1/4	415 (500-1 1/4)
CIRCLING	1480-1	455 (500-1)	1600-1 1/2	1880-2 3/4
			575 (600-1 1/2)	855 (900-2 3/4)

SPARTA, TENNESSEE  
Orig-D 21APR22

36°03'N-85°32'W

# UPPER CUMBERLAND RGNL (SRB) RNAV (GPS) RWY 22

SE-1, 31 OCT 2024 to 28 NOV 2024

SE-1, 31 OCT 2024 to 28 NOV 2024