

WAAS CH 65635 W36A	APP CRS 357°	Rwy Idg 3998 TDZE 413 Apt Elev 415
--	------------------------	---

RNAV (GPS) RWY 36

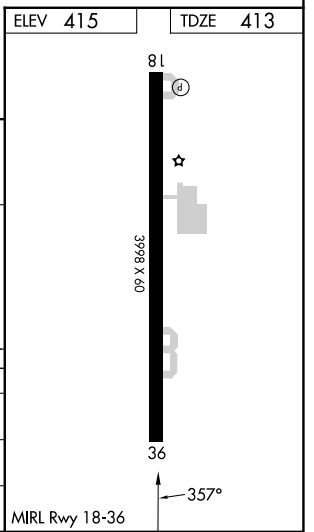
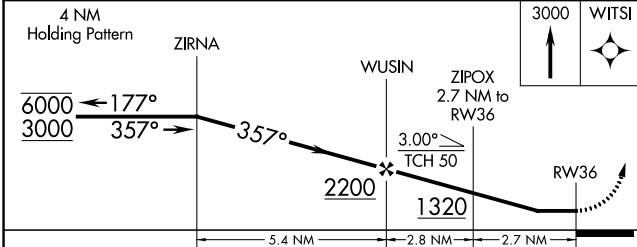
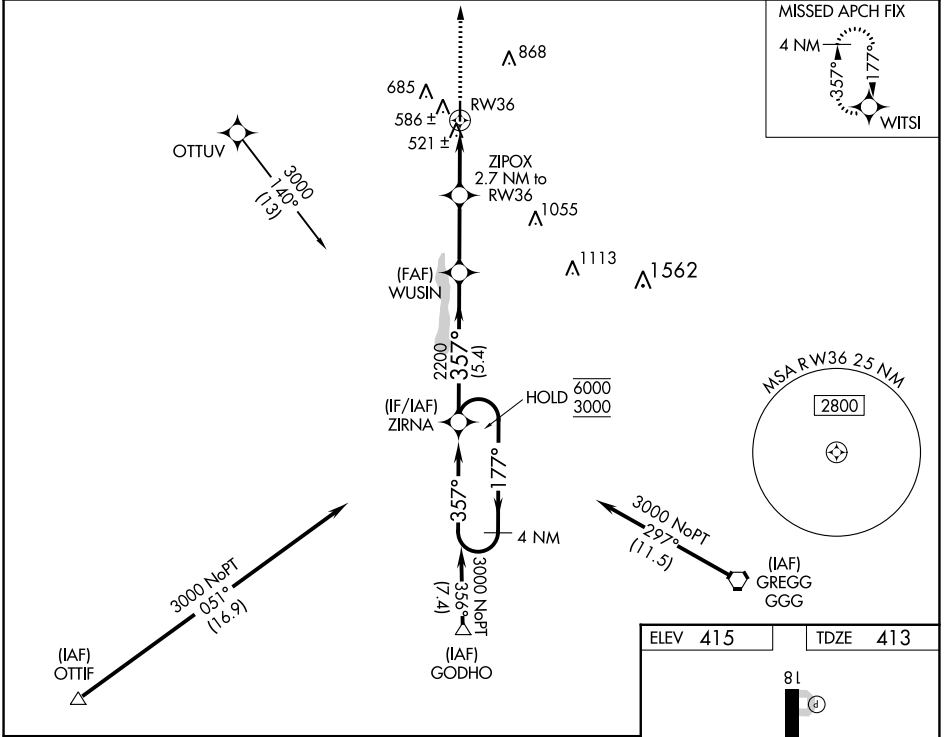
FOX STEPHENS FLD/GILMER MUNI (JXI)

RNP APCH - GPS.

⚠ Procedure NA at night. Rwy 36 helicopter visibility reduction below 1 SM NA. When local altimeter setting not received, use Longview altimeter setting and increase all MDAs 60 feet and LNAV visibility Cat C 1/8 SM and LP and Circling visibility Cat C 1/4 SM.

MISSED APPROACH: Climb to 3000 direct WITSI and hold.

AWOS-3PT 120.250	LONGVIEW APP CON ★ 124.275 257.975	CTAF 122.9
----------------------------	--	----------------------



CATEGORY	A	B	C	D
LP MDA	780-1 367 (400-1)			NA
LNAV MDA	840-1	427 (500-1)	840-1 1/4 427 (500-1 1/4)	NA
C CIRCLING	1000-1 585 (600-1)	1060-1 645 (700-1)	1180-2 1/4 765 (800-2 1/4)	NA

SC-2, 31 OCT 2024 to 28 NOV 2024

SC-2, 31 OCT 2024 to 28 NOV 2024