

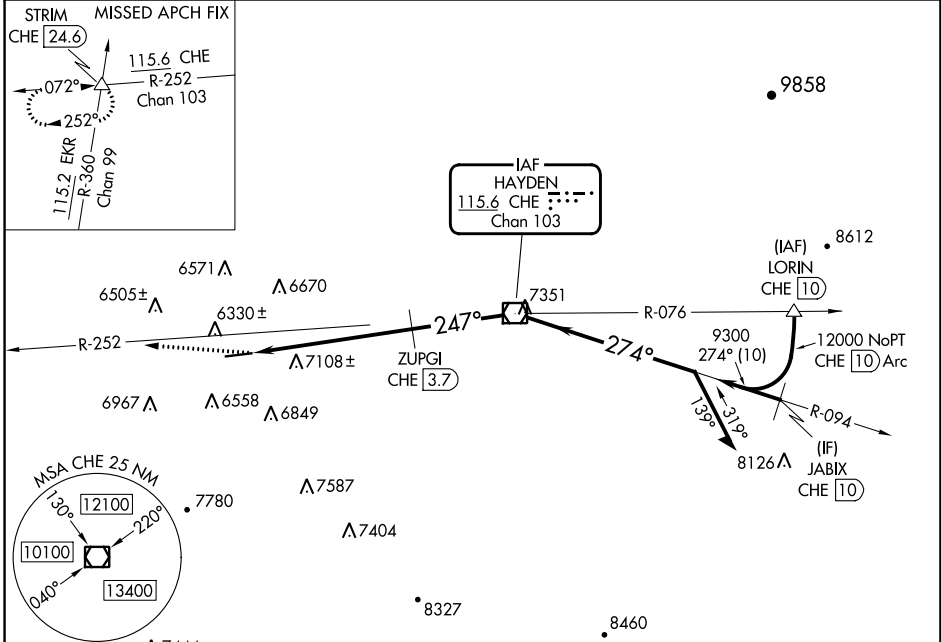
VOR/DME CHE <b>115.6</b> Chan <b>103</b>	APP CRS <b>247°</b>	Rwy Idg TDZE Apt Elev	<b>5606</b> <b>6198</b> <b>6198</b>
--	------------------------	-----------------------------	---

# VOR RWY 25

CRAIG-MOFFAT (CAG)

**⚠** Rwy 25 helicopter visibility reduction below 1 SM NA. Straight-in and Circling Rwy 25 NA at night.  
**❄** -31°C Circling NA for Cat D south of Rwy 7-25.  
 MISSED APPROACH: Climb to 10000 on CHE VOR/DME R-252 to STRIM INT/24.6 DME and hold.

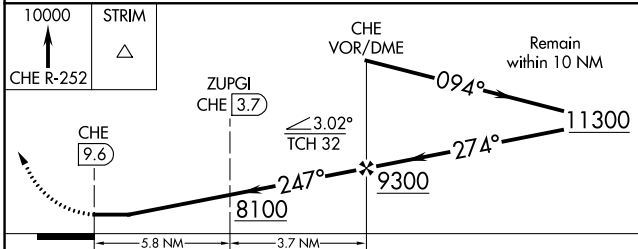
ASOS <b>135.425</b>	DENVER CENTER <b>120.475 235.975</b>	UNICOM <b>122.8 (CTAF)</b>
------------------------	---	-------------------------------



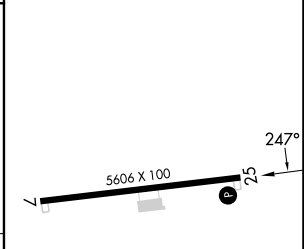
SW-1, 03 OCT 2024 to 31 OCT 2024

SW-1, 03 OCT 2024 to 31 OCT 2024

ELEV 6198	TDZE 6198
-----------	-----------



ELEV 6198	TDZE 6198
-----------	-----------



CATEGORY	A	B	C	D
S-25	8100-1¼ 1902 (2000-1¼)	8100-1½ 1902 (2000-1½)	8100-3	1902 (2000-3)
<b>C</b> CIRCLING	8100-1¼ 1902 (2000-1¼)	8100-1½ 1902 (2000-1½)	8100-3	1902 (2000-3)
ZUPI FIX MINIMUMS				
S-25	7360-1¼ 1162 (1200-1¼)	7360-1½ 1162 (1200-1½)	7360-3	1162 (1200-3)
<b>C</b> CIRCLING	7360-1¼ 1162 (1200-1¼)	7360-1½ 1162 (1200-1½)	7360-3	1162 (1200-3)

REIL Rwys 7 and 25  
 MIRL Rwy 7-25

FAF to MAP 9.6 NM

Knots	60	90	120	150	180
Min:Sec	9:36	6:24	4:48	3:50	3:12