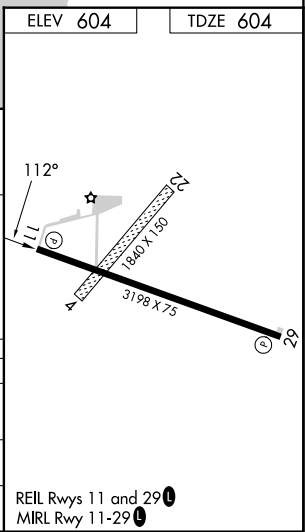
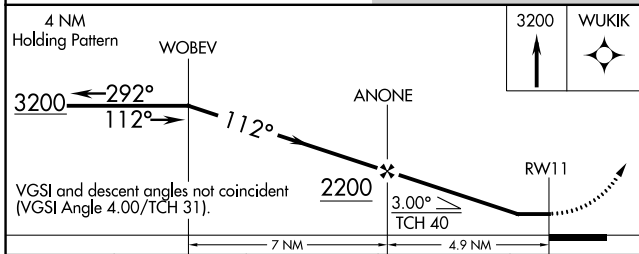
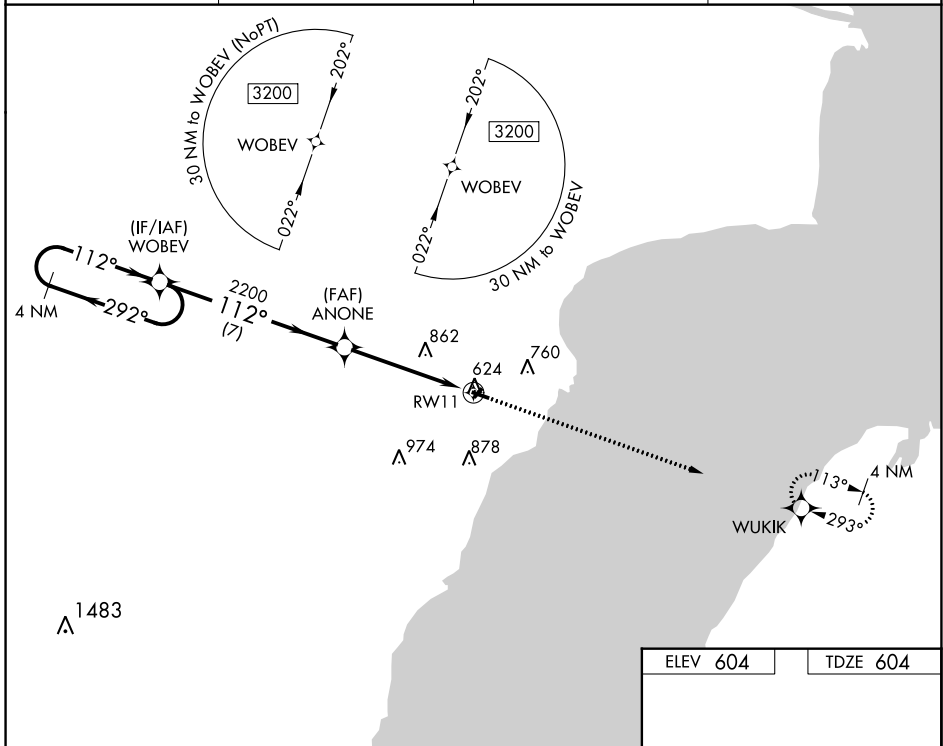


WAAS CH <b>99629</b> <b>W11A</b>	APP CRS <b>112°</b>	Rwy Idg <b>3198</b> TDZE <b>604</b> Apt Elev <b>604</b>
--	------------------------	---

# RNAV (GPS) RWY 11

OCONTO/J DOUGLAS BAKE MUNI (OCQ)

RNP APCH - GPS.			MISSED APPROACH: Climb to 3200 direct WUKIK and hold.
<p>▼ When local altimeter setting not received, use Menominee, MI altimeter setting. Procedure NA at night. Rwy 11 helicopter visibility reduction below 3/4 SM NA. Circling NA to Rws 4 and 22.</p>			
AWOS-3 <b>120.925</b>	MNM AWOS-3PT <b>121.45</b>	GREEN BAY APP CON ★ <b>120.3 338.2</b>	UNICOM <b>122.8</b> (CTAF) <b>0</b>



CATEGORY	A	B	C	D
LP MDA	1200-1	596 (600-1)	1200-1 3/4 596 (600-1 3/4)	NA
LNAV MDA	1220-1	616 (700-1)	1220-1 3/4 616 (700-1 3/4)	NA
CIRCLING	1220-1	616 (700-1)	1260-1 3/4 656 (700-1 3/4)	NA

EC-3, 03 OCT 2024 to 31 OCT 2024

EC-3, 03 OCT 2024 to 31 OCT 2024

REIL Rws 11 and 29 **0**  
MIRL Rwy 11-29 **0**