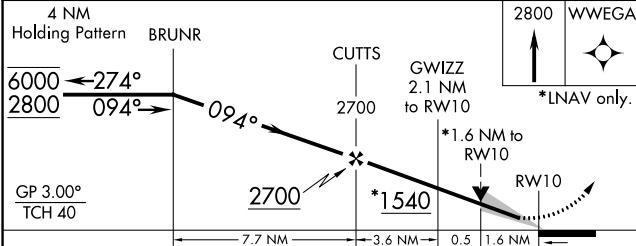
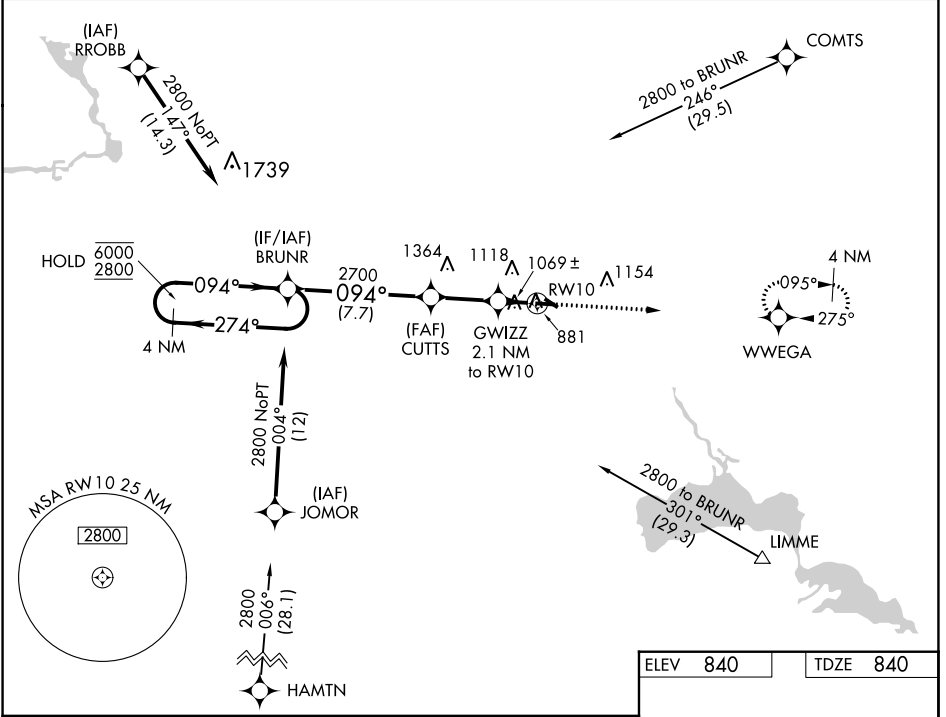


WAAS CH 63120 W10A	APP CRS 094°	Rwy Idg TDZE Apt Elev	5200 840 840
--	------------------------	-----------------------------	---

RNAV (GPS) RWY 10

WAUPACA MUNI (PCZ)

RNP APCH.		MISSED APPROACH: Climb to 2800 direct WWEGA and hold.
<p>▽ For uncompensated Baro-VNAV systems, LNAV/VNAV</p> <p>△ NA below -16°C or above 54°C.</p>		
AWOS-3 118.625	MINNEAPOLIS CENTER 124.4 317.7	UNICOM 122.8 (CTAF) 0



ELEV 840	TDZE 840			
<p>4 NM Holding Pattern BRUNR</p> <p>6000 ← 274°</p> <p>2800 → 094°</p> <p>GP 3.00°</p> <p>TCH 40</p> <p>2700</p> <p>*1540</p> <p>*1.6 NM to RWY 10</p> <p>1.6 NM</p> <p>0.5</p> <p>3.6 NM</p> <p>7.7 NM</p> <p>2800 WWEGA</p> <p>*LNAV only.</p> <p>094°</p> <p>13</p> <p>3899 X 75</p> <p>5200 X 100</p> <p>0.6% UP</p> <p>0.7% UP</p> <p>31</p>				
CATEGORY	A	B	C	D
LPV DA	1090-3/4		250 (300-3/4)	
LNAV/VNAV DA	1384-15/8		544 (600-15/8)	
LNAV MDA	1380-1	540 (600-1)	1380-1 1/2	540 (600-1 1/2)
C CIRCLING	1380-1 540 (600-1)	1420-1 580 (600-1)	1420-1 1/2 580 (600-1 1/2)	1500-2 660 (700-2)
REIL Rwy 10 and 28 0				
MIRL Rwy 10-28 and 13-31 0				

EC-3, 31 OCT 2024 to 28 NOV 2024

EC-3, 31 OCT 2024 to 28 NOV 2024