

WAAS	APP CRS	Rwy Idg	<b>4000</b>
CH <b>97416</b>	<b>252°</b>	TDZE	<b>643</b>
<b>W25A</b>		Apt Elev	<b>643</b>

## RNAV (GPS) RWY 25

MASON COUNTY (3I2)

**RNP APCH - GPS.**

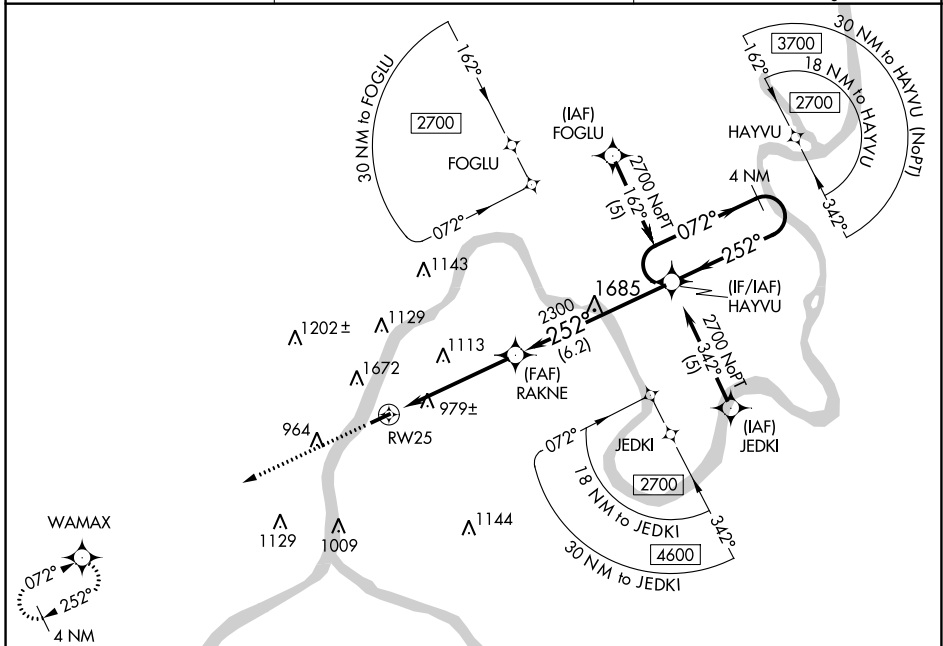
⚠ Circling NA NW of Rwy 7-25. Baro-VNAV NA when using Athens/Albany, OH altimeter setting. For uncompensated Baro-VNAV systems, LNAV/VNAV NA below -16°C or above 47°C. Rwy 25 helicopter visibility reduction below ¾ SM NA. When local altimeter setting not received, use Athens/Albany, OH altimeter setting and increase all DA 61 feet and all MDA 80 feet; increase LPV all Cats visibility ¼ mile and increase LNAV-VNAV all Cats visibility 1 mile. VDP NA when using Ohio altimeter setting.

**MISSED APPROACH:**  
 Climb to 3200 direct  
 WAMAX and hold.

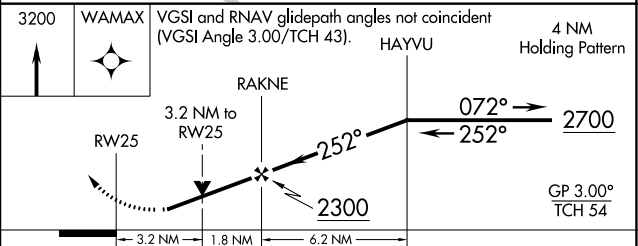
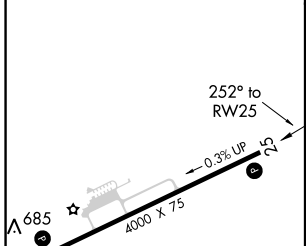
AWOS-3  
**119.675**

HUNTINGTON APP CON  
**128.4 270.1**

UNICOM  
**122.8** (CTAF) 0



ELEV	<b>643</b>	TDZE	<b>643</b>
------	------------	------	------------



CATEGORY	A	B	C	D
LPV DA		1430-2¾	787 (800-2¾)	
LNAV/VNAV DA		1727-4	1084 (1100-4)	
LNAV MDA	1700-1¼ 1057 (1100-1¼)	1700-1½ 1057 (1100-1½)	1700-3	1057 (1100-3)
CIRCLING	1700-1¼ 1057 (1100-1¼)	1700-1½ 1057 (1100-1½)	1700-3	1057 (1100-3)