

WAAS CH 45816 W18A	APP CRS 184°	Rwy Idg TDZE 752 Apt Elev 754	4000
---------------------------------	------------------------	---	-------------

RNAV (GPS) RWY 18

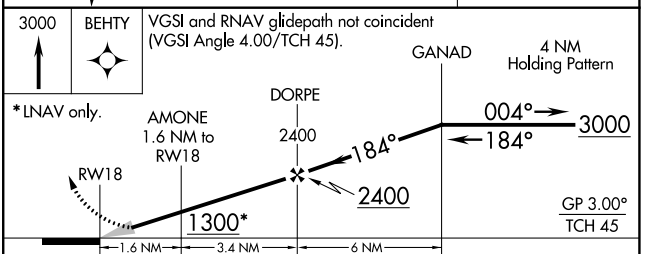
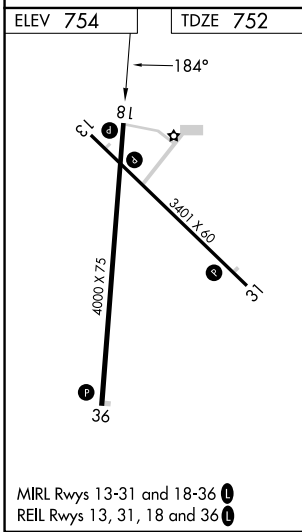
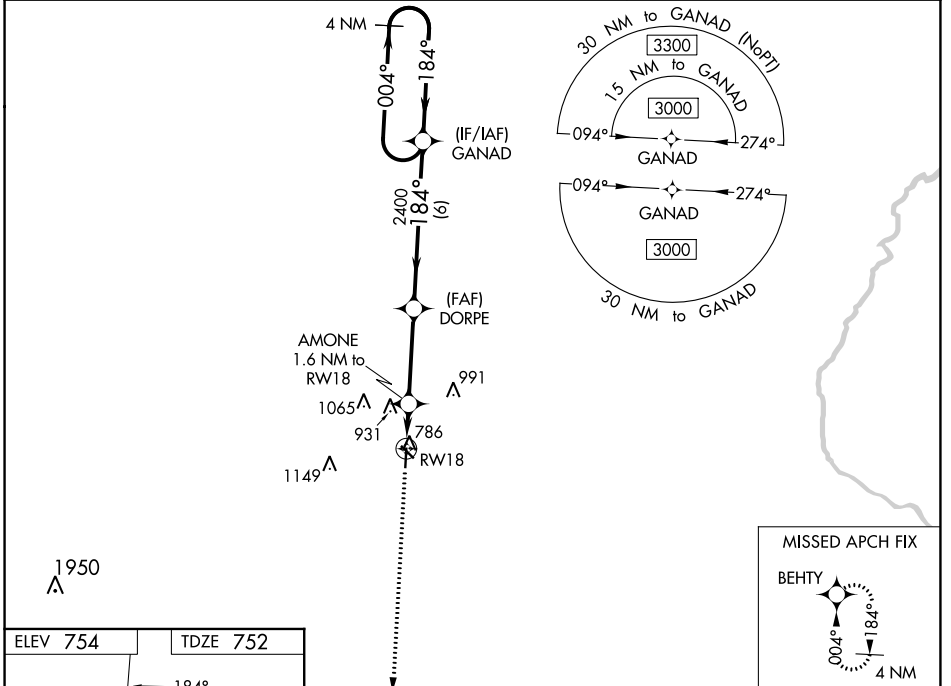
WASHINGTON MUNI (A WG)

RNP APCH.

▼ For uncompensated Baro-VNAV systems, LNAV/VNAV NA below -6°C (22°F) or above 54°C (130°F).
 ▲ Baro-VNAV NA when using Iowa City altimeter setting. When local altimeter setting not received, use Iowa City altimeter setting: increase LPV DA to 1064 feet, LNAV/VNAV DA to 1116 feet; increase all MDAs 80 feet and visibility LNAV and Circling Cat C ¼ SM.

MISSED APPROACH:
 Climb to 3000 direct
 BEHTY and hold.

AWOS-3 127.825	CHICAGO CENTER 135.6 370.95	UNICOM 122.7 (CTAF) 0
--------------------------	---------------------------------------	---------------------------------



CATEGORY	A	B	C	D
LPV DA	1002-1 250 (300-1)			NA
LNAV/VNAV DA	1054-1 302 (300-1)			NA
LNAV MDA	1160-1	408 (500-1)	1160-1½ 408 (500-1½)	NA
C CIRCLING	1200-1 446 (500-1)	1260-1 506 (600-1)	1500-2¼ 746 (800-2¼)	NA

NC-3, 31 OCT 2024 to 28 NOV 2024

NC-3, 31 OCT 2024 to 28 NOV 2024