

WAAS CH 86514 W09A	APP CRS 095°	Rwy Idg 4502 TDZE 760 Apt Elev 763
--	------------------------	---

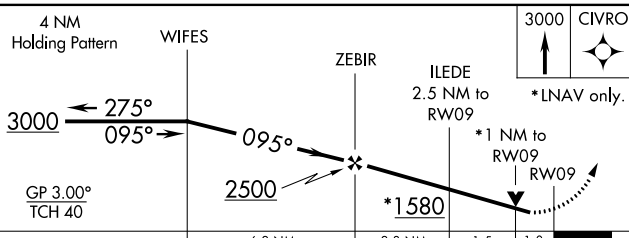
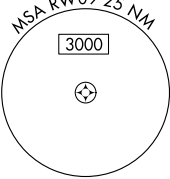
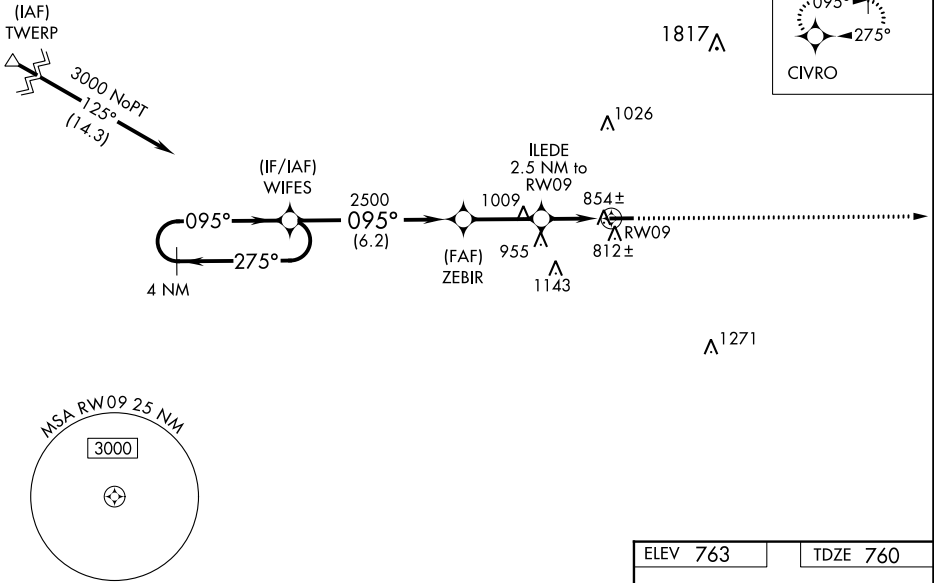
RNAV (GPS) RWY 9

PUTNAM COUNTY (OWX)

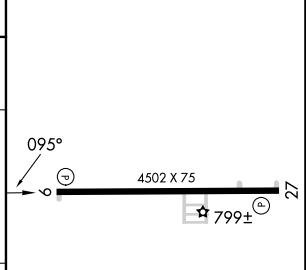
RNP APCH.	<p>▼ For uncompensated Baro-VNAV systems, LNAV/VNAV NA below -16°C or above 54°C. ▲ NA Rwy 9 helicopter visibility reduction below ¼ SM NA. Baro-VNAV and VDP NA when using Findlay altimeter setting. When local altimeter setting not received, use Findlay altimeter setting and increase all DAs/MDAs 40 feet.</p>	MISSED APPROACH: Climb to 3000 direct CIVRO and hold.
-----------	---	--

AWOS-3 120.525	TOLEDO APP CON 120.8 317.55	UNICOM 122.7 (CTAF)
--------------------------	---------------------------------------	-------------------------------

Procedure NA for arrivals at TWERP on V8-422 westbound.



ELEV 763	TDZE 760
----------	----------



CATEGORY	A	B	C	D
LPV DA	1048-1	288 (300-1)		NA
LNAV/ VNAV DA	1147-1 ½	387 (400-1 ½)		NA
LNAV MDA	1120-1	360 (400-1)		NA
CIRCLING	1200-1 437 (500-1)	1220-1 457 (500-1)		NA

REIL Rwy 9 and 27
MIRL Rwy 9-27

EC-2, 03 OCT 2024 to 31 OCT 2024

EC-2, 03 OCT 2024 to 31 OCT 2024