

APP CRS <b>182°</b>	Rwy Idg TDZE Apt Elev	<b>5005</b> <b>319</b> <b>324</b>
------------------------	-----------------------------	---

# RNAV (GPS) RWY 18

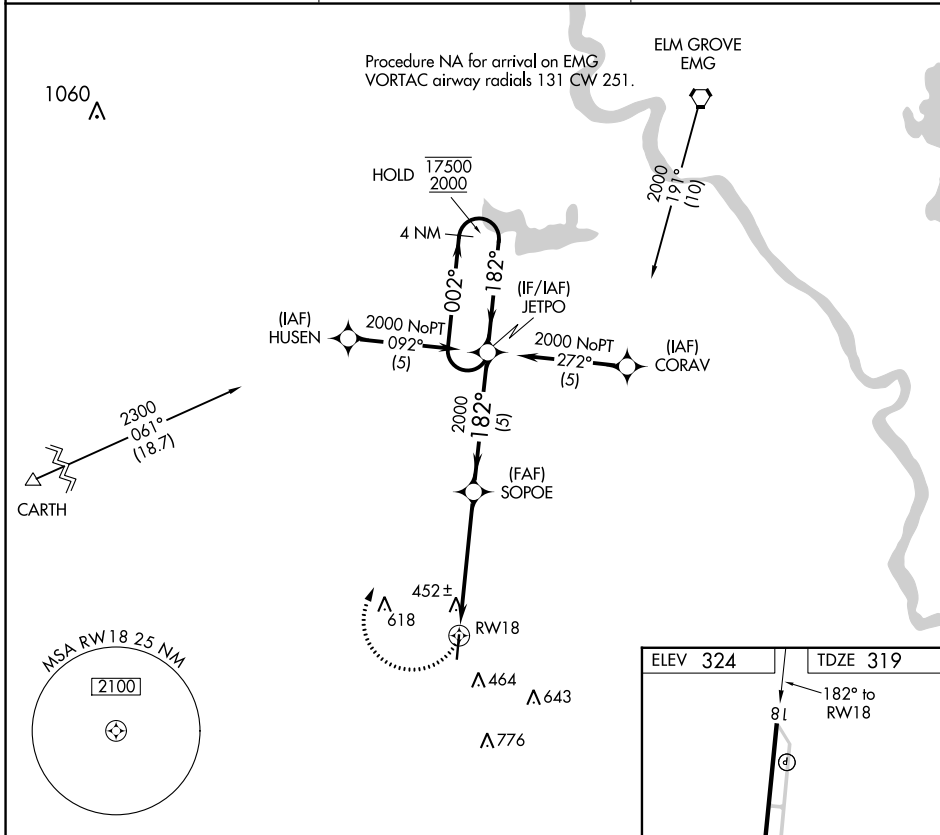
C E 'RUSTY' WILLIAMS (3F'3)

RNP APCH

Procedure NA at night. Rwy 18 helicopter visibility reduction below 1 SM NA. When local altimeter setting not received, use Shreveport Rgnl altimeter setting: increase Circling Cat C MDA 80 feet and visibility 1/2 SM.

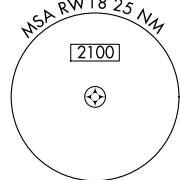
MISSED APPROACH: Climbing right turn to 2000 direct JETPO and hold.

AWOS-3PT <b>119.125</b>	SHREVEPORT APP CON ★ <b>119.9 335.55</b>	UNICOM <b>122.8 (CTAF) 0</b>
----------------------------	---	---------------------------------

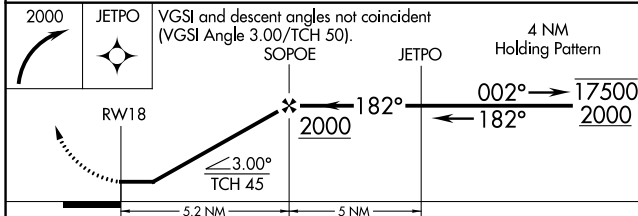
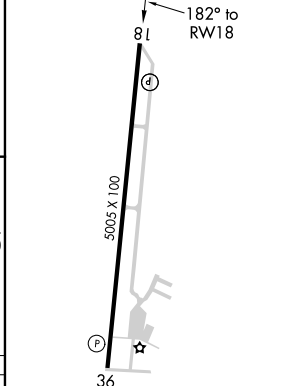


SC-4, 13 JUN 2024 to 11 JUL 2024

SC-4, 13 JUN 2024 to 11 JUL 2024



ELEV 324	TDZE 319
----------	----------



CATEGORY	A	B	C	D
RNAV MDA	780-1	461 (500-1)	780-1¼ 461 (500-1¼)	NA
CIRCLING	880-1	556 (600-1)	920-1½ 596 (600-1½)	NA

MIRL Rwy 18-36 0  
REIL Rwy 18 and 36 0