

WAAS CH <b>69340</b> <b>W225A</b>	APP CRS <b>251°</b>	Rwy Idg TDZE Apt Elev	<b>3504</b> <b>1254</b> <b>1255</b>
---	------------------------	-----------------------------	---

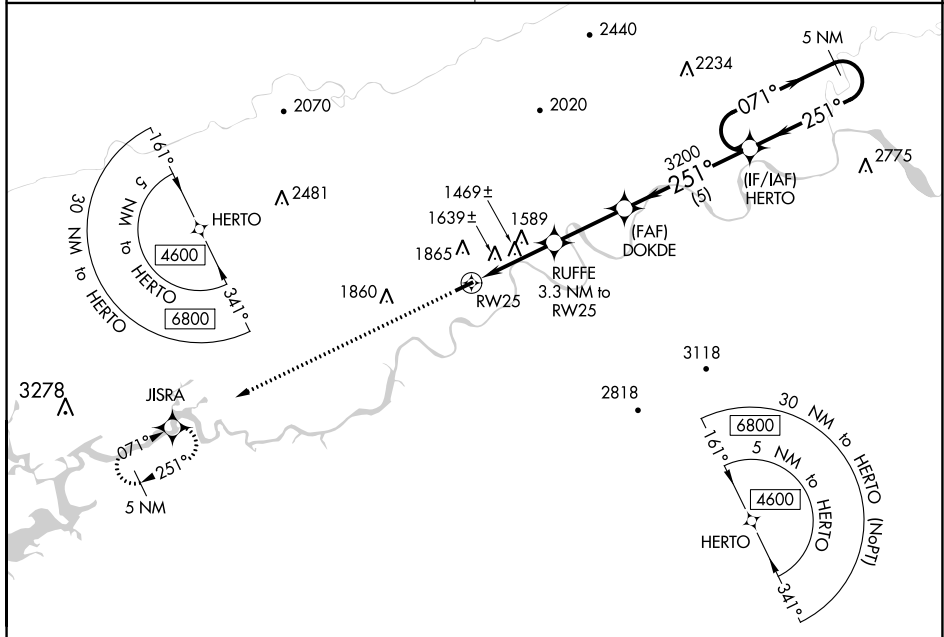
# RNAV (GPS) RWY 25

HAWKINS COUNTY (RVN)

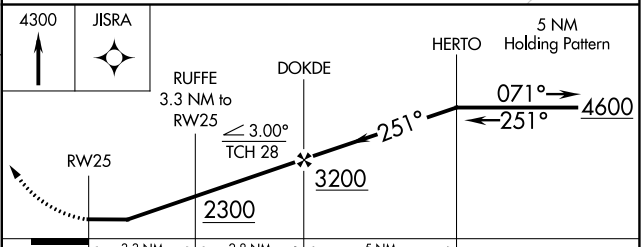
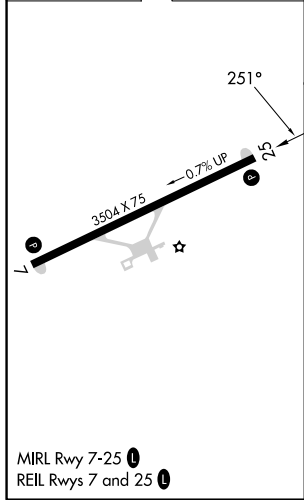
**NA** DME/DME RNP-0.3 NA. Procedure NA at night. Obtain local altimeter setting on CTAF; when not received, use Tri-Cities altimeter setting and increase all MDA 120 feet, increase LP Cat C visibility  $\frac{3}{8}$  SM, LNAV Cat B visibility  $\frac{1}{4}$  SM, Cat C visibility  $\frac{3}{8}$  SM, and increase Circling Cat B visibility  $\frac{1}{4}$  SM. Rwy 7, 25 helicopter visibility reduction below 1 SM NA.

**MISSED APPROACH:**  
Climb to 4300 direct JISRA and hold.

TRI CITY APP CON ★ <b>128.05 317.5</b>	UNICOM <b>122.8 (CTAF) 0</b>
---	---------------------------------



ELEV 1255	TDZE 1254
-----------	-----------



CATEGORY	A	B	C	D
LP MDA	1720-1	466 (500-1)	1720-1 $\frac{3}{8}$ 466 (500-1 $\frac{3}{8}$ )	NA
LNAV MDA	1900-1	646 (700-1)	1900-1 $\frac{7}{8}$ 646 (700-1 $\frac{7}{8}$ )	NA
<b>C</b> CIRCLING	2180-1 $\frac{1}{4}$	925 (1000-1 $\frac{1}{4}$ )	2320-3 1065 (1100-3)	NA

SE-1, 31 OCT 2024 to 28 NOV 2024

SE-1, 31 OCT 2024 to 28 NOV 2024