

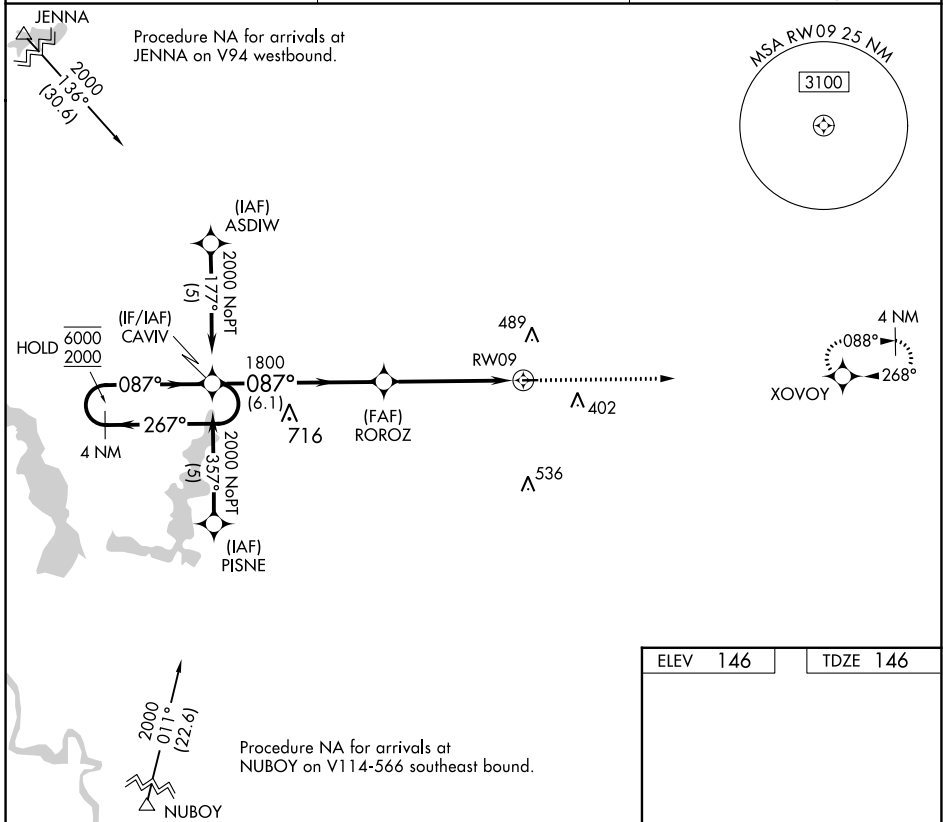
APP CRS	Rwy Idg	3002
087°	TDZE	146
	Apt Elev	146

RNAV (GPS) RWY 9

DAVID G JOYCE (ØR5)

RNP APCH - GPS.		MISSED APPROACH: Climb to 2000 direct XVOVOY and hold.
▽ ▲ NA	Procedure NA at night. Rwy 9 helicopter visibility reduction below 1 SM NA. Use Alexandria Intl altimeter setting, when not received use Esler Rgnl altimeter setting.	

AEX ASOS 123.975	POLK APP CON 125.4 302.2	UNICOM 122.7 (CTAF) 0
----------------------------	------------------------------------	---------------------------------



SC-4, 03 OCT 2024 to 31 OCT 2024

SC-4, 03 OCT 2024 to 31 OCT 2024

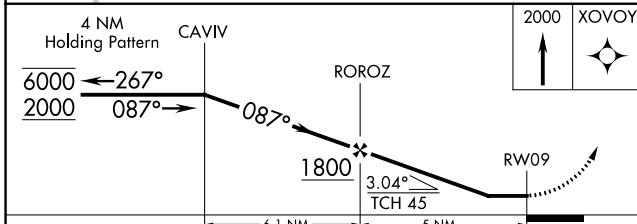
ELEV 146	TDZE 146
----------	----------

2000 XVOVOY

3002 X 100
0.9% UP

3.04° TCH 45

6.1 NM 5 NM



CATEGORY	A	B	C	D
LNAV MDA	780-1	634 (700-1)		NA
C CIRCLING	780-1 634 (700-1)	900-1 754 (800-1)		NA

MIRL Rwy 9-27 **0**
REIL Rwy 9 and 27 **0**