

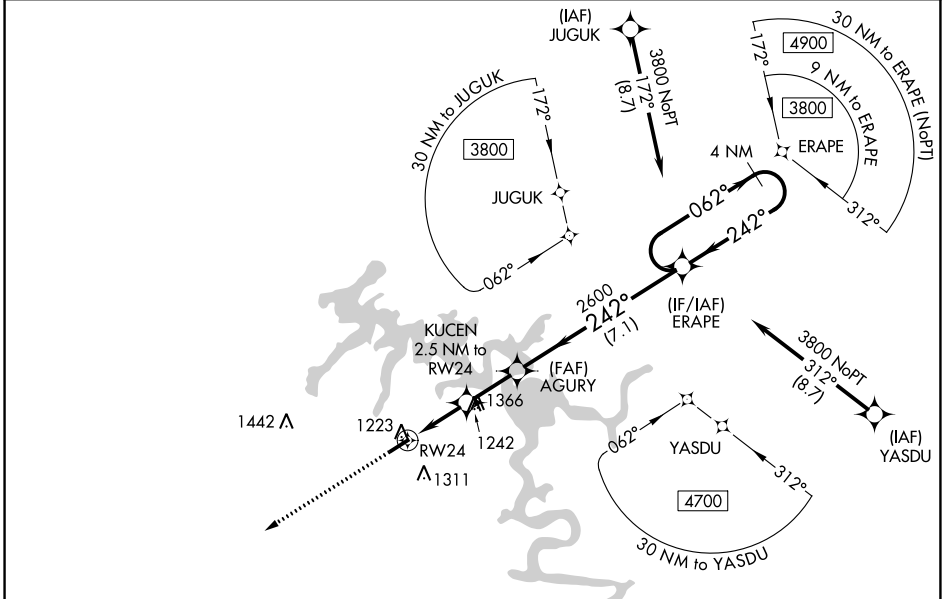
WAAS CH 93527 W24A	APP CRS 242°	Rwy Idg TDZE 1084 Apt Elev 1084
--	------------------------	---

RNAV (GPS) RWY 24

SMITHVILLE MUNI (ØA.3)

RNP APCH.	Baro-VNAV NA. Procedure NA at night. Rwy 24 helicopter visibility reduction below 1 SM NA. Use Sparta altimeter setting, when not received, use Tullahoma altimeter setting and increase LPV DA to 1455 feet; increase LNAV/VNAV DA to 1471 feet and all visibilities 1/8 SM, increase all MDA 60 feet and LNAV visibility Cat C 1/8 SM.	MISSED APPROACH: Climb to 3800 direct CIVAK and hold.
-----------	--	---

SRB AWOS-3 128.25	MEMPHIS CENTER 132.9 290.3	UNICOM 122.8 (CTAF)
-----------------------------	--------------------------------------	-------------------------------

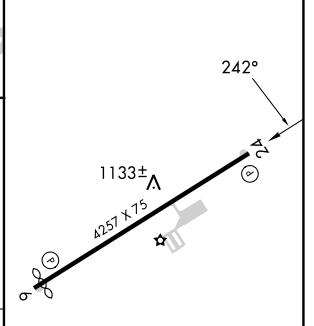
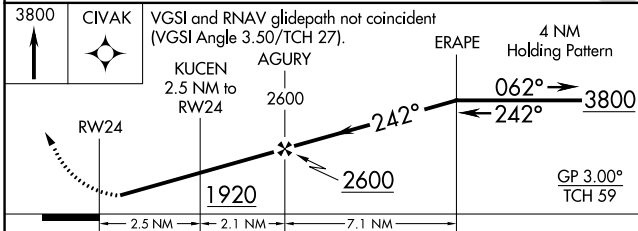


SE-1, 05 SEP 2024 to 03 OCT 2024

SE-1, 05 SEP 2024 to 03 OCT 2024



ELEV 1084	TDZE 1084
-----------	-----------



CATEGORY	A	B	C	D
LPV DA	1402-1	318 (400-1)		NA
LNAV/VNAV DA	1418-1	334 (400-1)		NA
LNAV MDA	1520-1	436 (500-1)	1520-1¼ 436 (500-1¼)	NA

MIRL Rwy 6-24
REIL Rwy 6 and 24