

SHERIDAN, INDIANA

AL-6252 (FAA)

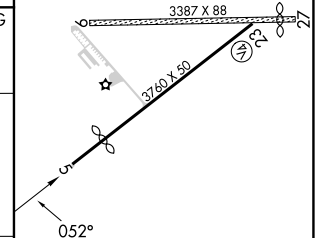
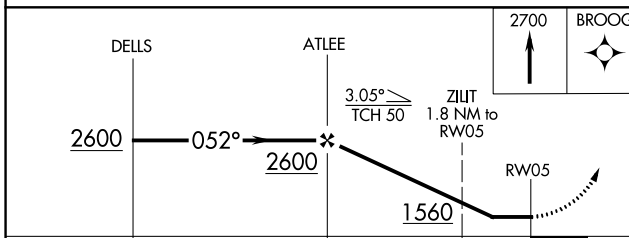
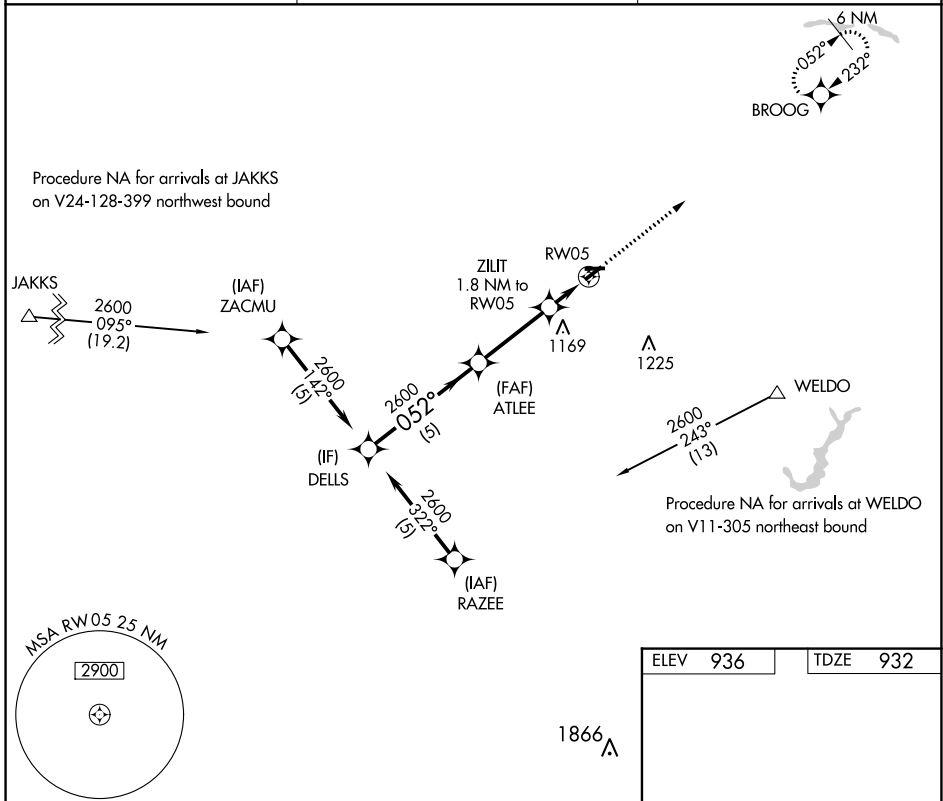
23278

APP CRS	Rwy Idg	3110
052°	TDZE	932
	Apt Elev	936

RNAV (GPS) RWY 5

SHERIDAN (5I4)

RNP APCH.		MISSED APPROACH: Climb to 2700 direct BROOG and hold.
NA	Circling NA to Rws 9 and 27. Procedure NA at night. Rwy 5 helicopter visibility reduction below 1 SM NA. Use Indianapolis Exec altimeter setting.	
TYQ AWOS-3PT 120.725	INDIANAPOLIS APP CON 124.65 317.8	UNICOM 123.075 (CTAF) 0



	5 NM	3.2 NM	1.8 NM	
CATEGORY	A	B	C	D
LNNAV MDA	1400-1	468 (500-1)	1400-1 ³ / ₈ 468 (500-1 ³ / ₈)	NA
CIRCLING	1460-1 524 (600-1)	1480-1 544 (600-1)	1500-1 ¹ / ₂ 564 (600-1 ¹ / ₂)	NA

ELEV	936	TDZE	932
LIRL Rwy 5-23 0			

SHERIDAN, INDIANA
Orig-C 08OCT20

40°11'N-86°13'W

RNAV (GPS) RWY 5

SHERIDAN (5I4)

EC-2, 08 AUG 2024 to 05 SEP 2024

EC-2, 08 AUG 2024 to 05 SEP 2024