

WAAS CH 63125 W21A	APP CRS 207°	Rwy Idg TDZE Apt Elev	5500 35 36
----------------------------------------	------------------------	-----------------------------	---------------------------------------

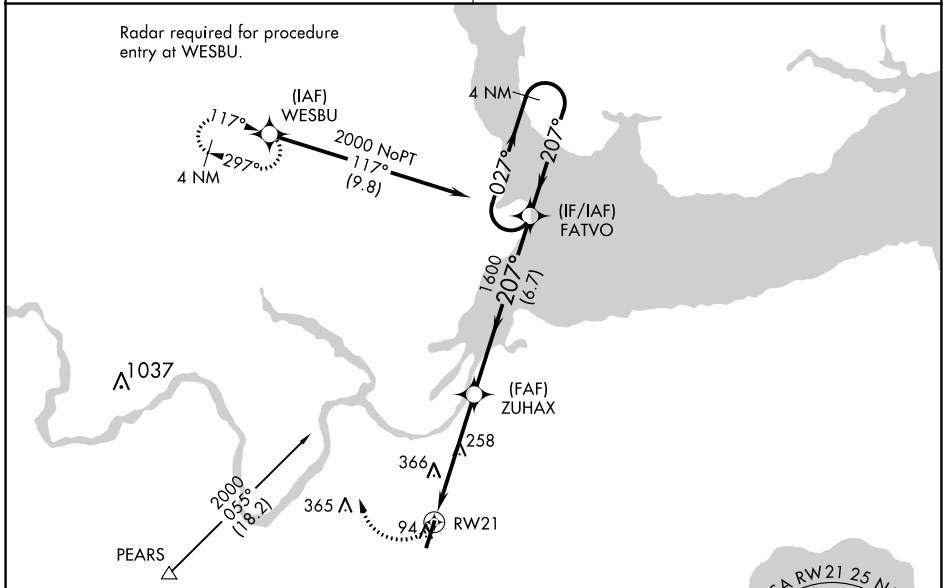
RNAV (GPS) RWY 21

PLYMOUTH MUNI (PMZ)

⚠ NA Use Northeastern Rgnl altimeter setting; when not received, use Coastal Carolina Rgnl altimeter setting and increase all MDA 80 feet; increase all Cat C visibilities ¼ SM. When VGSI inop, procedure NA at night. DME/DME RNP-0.3 NA.

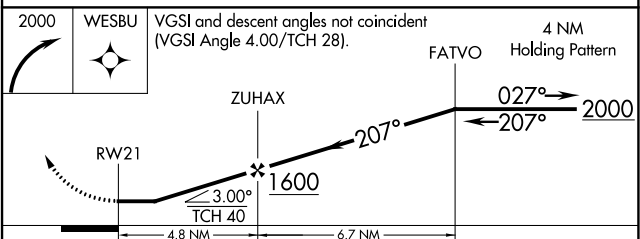
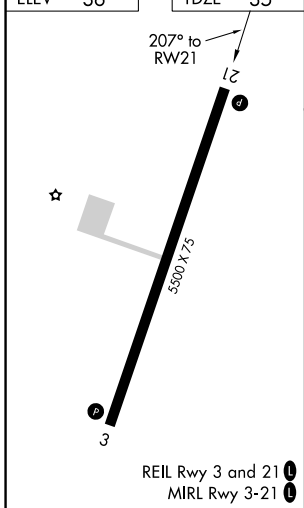
MISSED APPROACH: Climbing right turn to 2000 direct WESBU and hold.

CHERRY POINT APP CON 119.35 377.175	UNICOM 122.8 (CTAF) 0
-----------------------------------------------	---------------------------------



Procedure NA for arrivals at PEARS on V70 southbound and V139 southwest bound.

ELEV 36	TDZE 35
---------	---------



CATEGORY	A	B	C	D
LP MDA	600-1	565 (600-1)	600-1½ 565 (600-1½)	NA
LNAV MDA	660-1	625 (700-1)	660-1¾ 625 (700-1¾)	NA
CIRCLING	660-1 624 (700-1)	720-1 684 (700-1)	720-2 684 (700-2)	NA

SE-2, 31 OCT 2024 to 28 NOV 2024

SE-2, 31 OCT 2024 to 28 NOV 2024