

WAAS CH 40238 W27A	APP CRS 273°	Rwy Idg 3641 TDZE 708 Apt Elev 708
--	------------------------	--

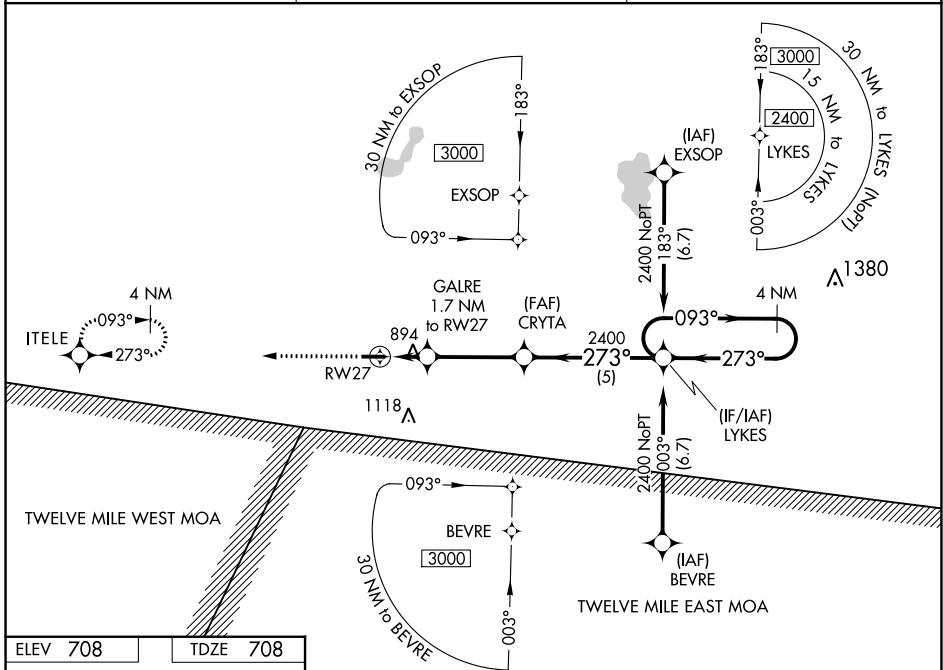
RNAV (GPS) RWY 27

ARENS FLD (RWN)

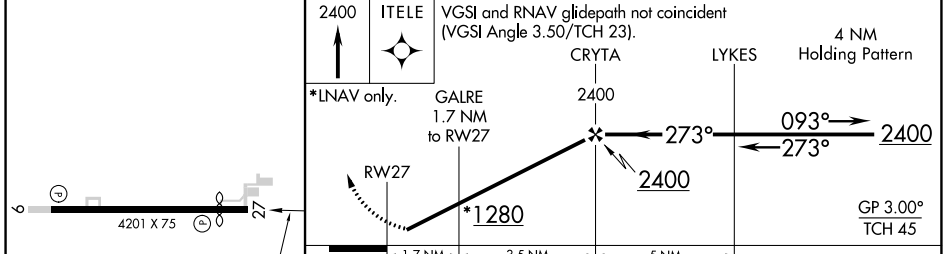
NA Baro-VNAV NA. Use Knox altimeter setting; when not received, use Rochester altimeter setting and increase all DA/MDA 20 feet and LNAV/VNAV all Cals visibility 1/8 mile. DME/DME RNP-0.3 NA. Helicopter visibility reduction below 3/4 SM NA.

MISSED APPROACH: Climb to 2400 direct ITELE and hold.

OXI AWOS-3 135.775	SOUTH BEND APP CON ★ 132.05 257.8	UNICOM 122.8 (CTAF) 0
------------------------------	---	---------------------------------



ELEV 708	TDZE 708
----------	----------



2400	ITELE	VGSI and RNAV glidepath not coincident (VGSI Angle 3.50/TCH 23).	4 NM Holding Pattern
*LNAV only.	GALRE 1.7 NM to RWY 27	CRYTA 2400	LYKES 2400
RWY 27	*1280	273°	093° → 2400
→ 1.7 NM	→ 3.5 NM	→ 5 NM	← 273°
			GP 3.00° TCH 45

CATEGORY	A	B	C	D
LPV DA	995-1		287 (300-1)	NA
LNAV/VNAV DA	1224-1 ³ / ₄		516 (600-1 ³ / ₄)	NA
LNAV MDA	1200-1	492 (500-1)	1200-1 ³ / ₈ 492 (500-1 ³ / ₈)	NA
C CIRCLING	1240-1	532 (600-1)	1480-2 ¹ / ₄ 772 (800-2 ¹ / ₄)	NA

EC-2, 31 OCT 2024 to 28 NOV 2024

EC-2, 31 OCT 2024 to 28 NOV 2024