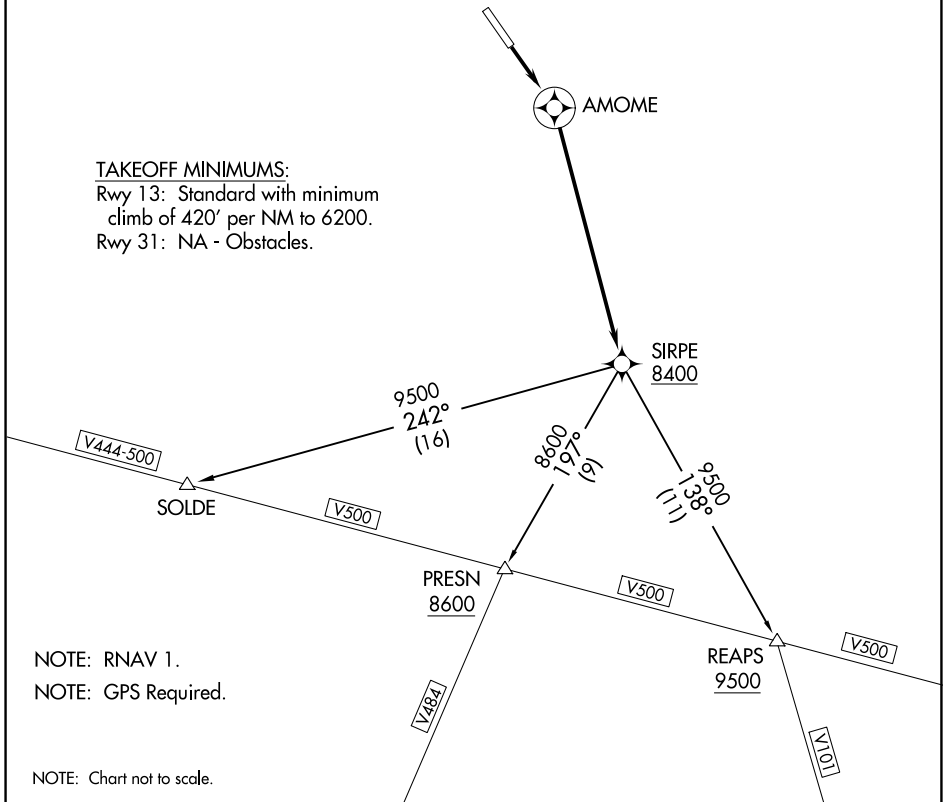


**TOP ALTITUDE:**  
**PRESN AND REAPS TRANSITIONS: 10000;**  
**SOLDE TRANSITION: ASSIGNED BY ATC**

GND CON 121.7  
HAILEY TOWER \* 125.6  
SALT LAKE CENTER 118.05 363.0  
UNICOM 122.95

**TAKEOFF MINIMUMS:**  
Rwy 13: Standard with minimum climb of 420' per NM to 6200.  
Rwy 31: NA - Obstacles.



NW-1, 03 OCT 2024 to 31 OCT 2024

NW-1, 03 OCT 2024 to 31 OCT 2024

NOTE: RNAV 1.  
NOTE: GPS Required.

NOTE: Chart not to scale.

**DEPARTURE ROUTE DESCRIPTION**

TAKEOFF RUNWAY 13: Climb direct AMOME, then climbing right turn direct SIRPE; cross SIRPE at or above 8400, thence. . . .  
. . . .on (Transition).

- PRESN TRANSITION (AUREL3.PRESN)
- REAPS TRANSITION (AUREL3.REAPS)
- SOLDE TRANSITION (AUREL3.SOLDE)