

WAAS CH 86942 W18A	APP CRS 184°	Rwy Idg TDZE Apt Elev	5003 39 39
--	------------------------	-----------------------------	---------------------------------------

RNAV (GPS) RWY 18

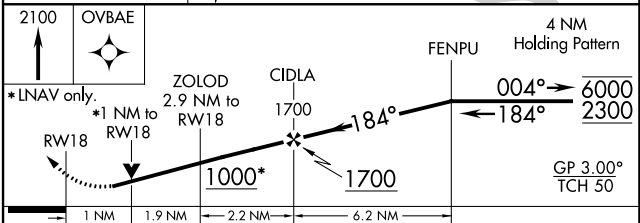
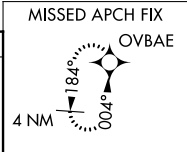
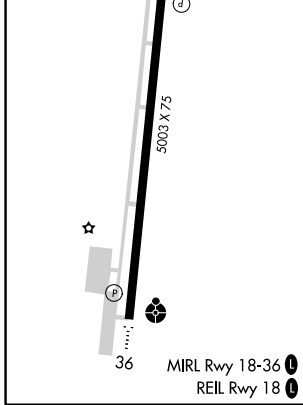
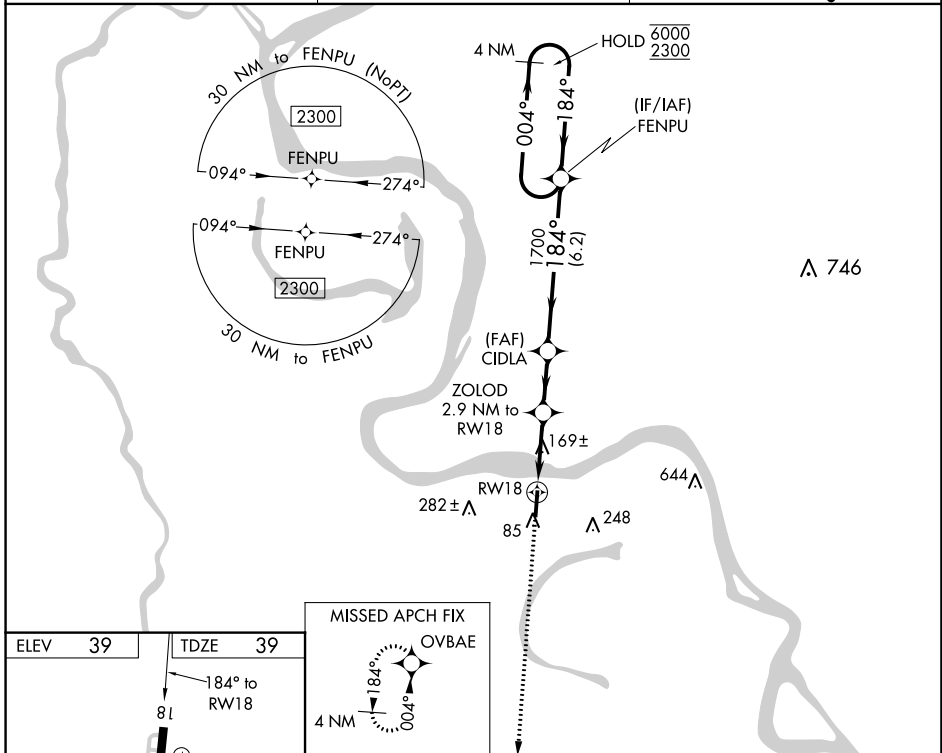
FALSE RIVER RGNL (HZR)

RNP APCH.

▼ Rwy 18 helicopter visibility reduction below 3/4 SM NA. When local altimeter setting not received, use Baton Rouge altimeter setting and increase all DA 51 feet and all visibility 1/8 SM; increase all MDA 60 feet, and LNAV Cat C/D and Circling Cat C visibility 1/4 SM. For uncompensated Baro-VNAV systems, LNAV/VNAV NA below -15°C or above 54°C. Baro-VNAV and VDP NA when using Baton Rouge altimeter setting.

MISSED APPROACH:
Climb to 2100 direct
OVBAE and hold.

AWOS-3PT 121.250	BATON ROUGE APP CON* 120.3 278.3	UNICOM 122.8 (CTAF) 0
----------------------------	--	---------------------------------



CATEGORY	A	B	C	D
LPV DA	347-7/8		308 (400-7/8)	
LNAV/VNAV DA	317-7/8		278 (300-7/8)	
LNAV MDA	420-1	381 (400-1)	420-1 1/8	381 (400-1 1/8)
C CIRCLING	480-1 441 (500-1)	520-1 481 (500-1)	600-1 1/2 561 (600-1 1/2)	600-2 561 (600-2)

SC-4, 30 DEC 2021 to 27 JAN 2022

SC-4, 30 DEC 2021 to 27 JAN 2022