

ULYSSES, KANSAS

AL-6226 (FAA)

23334

WAAS CH <b>99539</b> <b>W12A</b>	APP CRS <b>124°</b>	Rwy ldg TDZE Apt Elev	<b>4600</b> <b>3071</b> <b>3071</b>
--	------------------------	-----------------------------	---

# RNAV (GPS) RWY 12

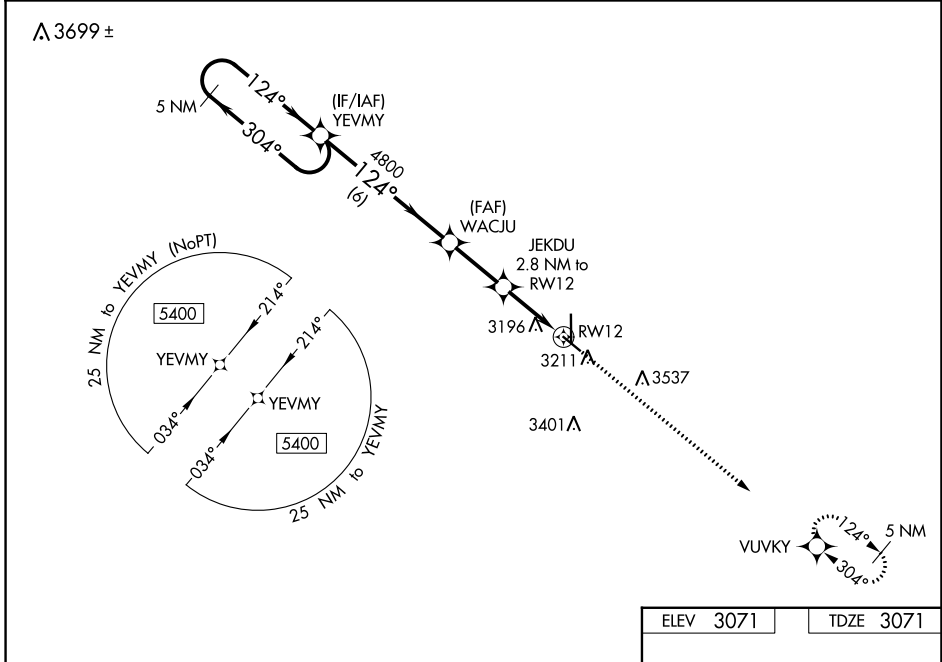
ULYSSES (ULS)

RNP APCH - GPS.

**⚠** For uncompensated Baro-VNAV systems, LNAV/VNAV NA below -21°C or above 54°C.  
**⚠** When local altimeter setting not received, use Garden City altimeter setting: increase LPV DA to 3431 feet, LNAV/VNAV DA to 3563 feet and visibility 1/8 SM; increase all MDAs 120 Feet and visibility Cat C 1/4 SM. Baro-VNAV and VDP NA when using Garden City altimeter setting.

MISSED APPROACH:  
Climb to 5400 direct VUVKY and hold.

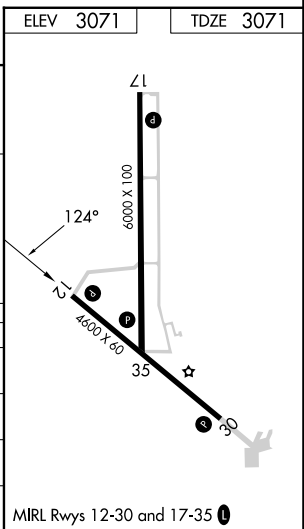
AWOS-3PT <b>118.95</b>	KANSAS CITY CENTER <b>125.2 285.425</b>	UNICOM <b>122.8 (CTAF) 0</b>
---------------------------	--	---------------------------------



NC-2, 31 OCT 2024 to 28 NOV 2024

NC-2, 31 OCT 2024 to 28 NOV 2024

5400 ← 304°		YEVMY		WACJU 4800		JEKDU 2.8 NM to RW12		5400 VUVKY	
GP 3.00°		124° →		124°		1.1 NM to RW12		↑	
TCH 40				4800		4000		★	
		6 NM		2.5 NM		1.7 NM		1.1 NM	
CATEGORY	A	B	C	D					
LPV DA	3321-1 250 (300-1)				NA				
LNAV/VNAV DA	3453-1 1/4 382 (400-1 1/4)				NA				
LNAV MDA	3460-1 389 (400-1)		3460-1 1/8 389 (400-1 1/8)		NA				
<b>C</b> CIRCLING	3740-1 669 (700-1)		3900-2 1/2 829 (900-2 1/2)		NA				



ULYSSES, KANSAS  
Amdt 2A 06OCT22

37°36'N-101°22'W

# ULYSSES (ULS) RNAV (GPS) RWY 12