

WAAS CH 58332 W19A	APP CRS 186°	Rwy Idg TDZE 522 Apt Elev 522	5002
--	------------------------	---	-------------

RNAV (GPS) RWY 19

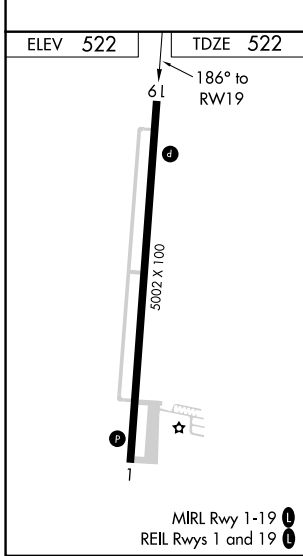
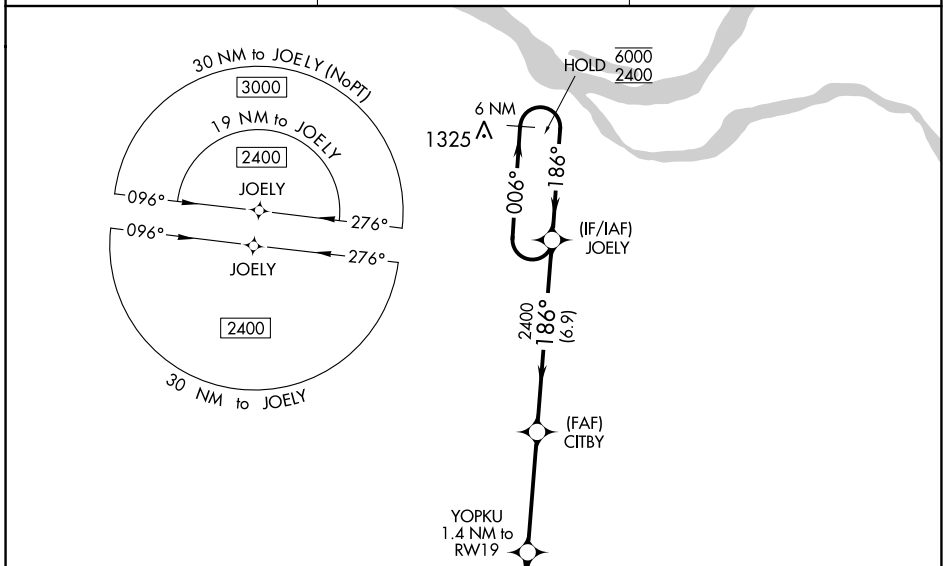
MAYFIELD GRAVES COUNTY (M25)

RNP APCH - GPS.

⚠ Circling Rwy 19 NA at night. Rwy 19 helicopter visibility reduction below 3/4 SM NA. Baro-VNAV NA when using Paducah altimeter setting. For uncompensated Baro-VNAV systems, LNAV/VNAV NA below -16°C or above 54°C. When local altimeter setting not received, use Paducah altimeter setting: increase LPV DA to 833 feet, LNAV/VNAV DA to 977 feet and all visibilities 1/4 SM; increase all MDAs 80 feet and visibility Cats C and D 1/4 SM.

⚠ MISSED APPROACH: Climb to 2300 direct LUXON and hold.

AWOS-3 120.625	MEMPHIS CENTER 133.65 292.15	UNICOM 122.8 (CTAF) 0
--------------------------	--	---------------------------------



ELEV 522	TDZE 522	MISSED APCH FIX LUXON	
2300	LUXON	VGSi and RNAV glidepath not coincident (VGSi Angle 3.00/TCH 35).	
6 NM	6 NM Holding Pattern	JOELY	
YOPKU 1.4 NM to RWY 19	CITBY 2400	JOELY	
RWY 19	1020	2400	
1.4 NM	4.3 NM	6.9 NM	
CATEGORY	A	B	C
LPV DA	772-1 250 (300-1)		
LNAV/VNAV DA	916-1 394 (400-1 1/2)		
LNAV MDA	880-1 358 (400-1)		
CIRCLING	1060-1	1060-1 1/2	1280-2 1/2
	538 (600-1)	538 (600-1 1/2)	758 (800-2 1/2)

SE-1, 31 OCT 2024 to 28 NOV 2024

SE-1, 31 OCT 2024 to 28 NOV 2024