

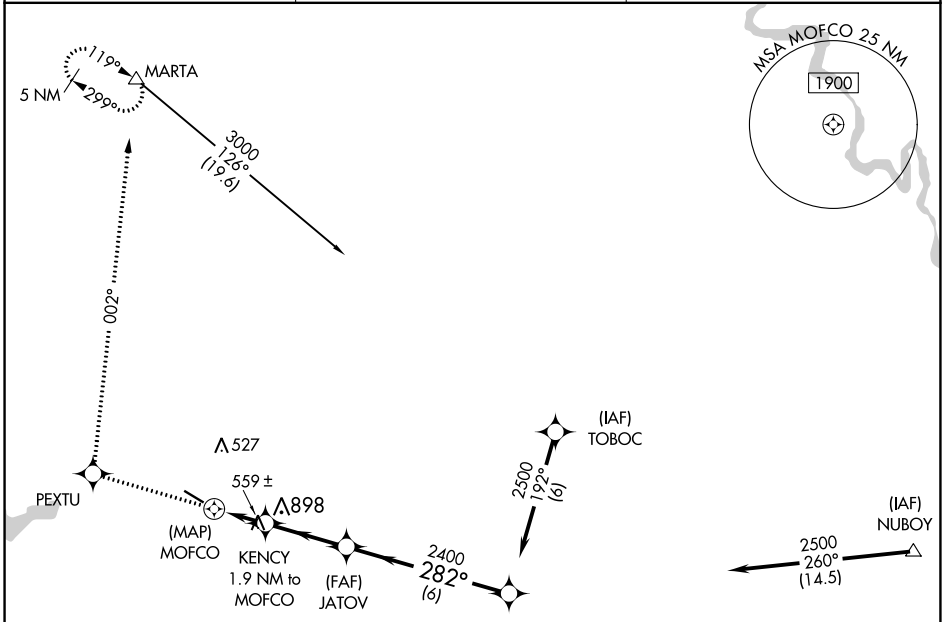
APP CRS	Rwy Idg 4402
282°	TDZE 311
	Apt Elev 319

RNAV (GPS) RWY 30

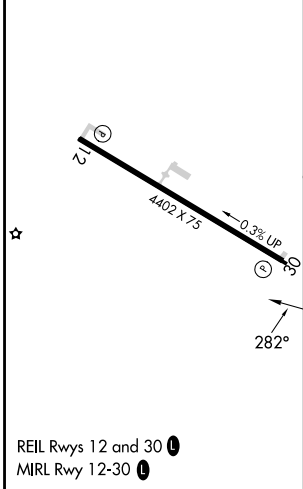
HART (3R4)

RNP APCH.	MISSED APPROACH: Climb to 4500 direct PEXTU and right turn via track 002° to MARTA and hold, continue climb in hold to 4500.
<p>▼ Rwy 30 helicopter visibility reduction below ¼ SM NA.</p> <p>▲ NA Use Fort Polk altimeter setting; when not received, use Natchitoches altimeter setting and increase all MDA 20 feet.</p>	

POLK APP CON 123.7 261.3	GCO 135.075	UNICOM 122.8 (CTAF)
------------------------------------	-----------------------	-------------------------------



ELEV 319	TDZE 311
-----------------	-----------------



<p>4500 PEXTU</p> <p>MARTA</p> <p>VGSI and descent angles not coincident (VGSI Angle 3.50/TCH 56).</p>		OXIDE		
<p>KENCY 1.9 NM to MOFCO</p> <p>JATOV</p> <p>MOFCO</p> <p>2400</p> <p>282°</p> <p>2500</p> <p>Procedure Turn NA</p>		<p>1260</p> <p>3.57° TCH 50</p>		
<p>0.5 1.9 NM 3 NM 6 NM</p>		<p>282°</p>		
CATEGORY	A	B	C	D
LNAV MDA	900-1 589 (600-1)		900-1¾ 589 (600-1¾)	NA

SC-4, 31 OCT 2024 to 28 NOV 2024

SC-4, 31 OCT 2024 to 28 NOV 2024