

WAAS CH 45732 W35A	APP CRS 346°	Rwy Idg TDZE Apt Elev	4010 1522 1523
--	------------------------	-----------------------------	---

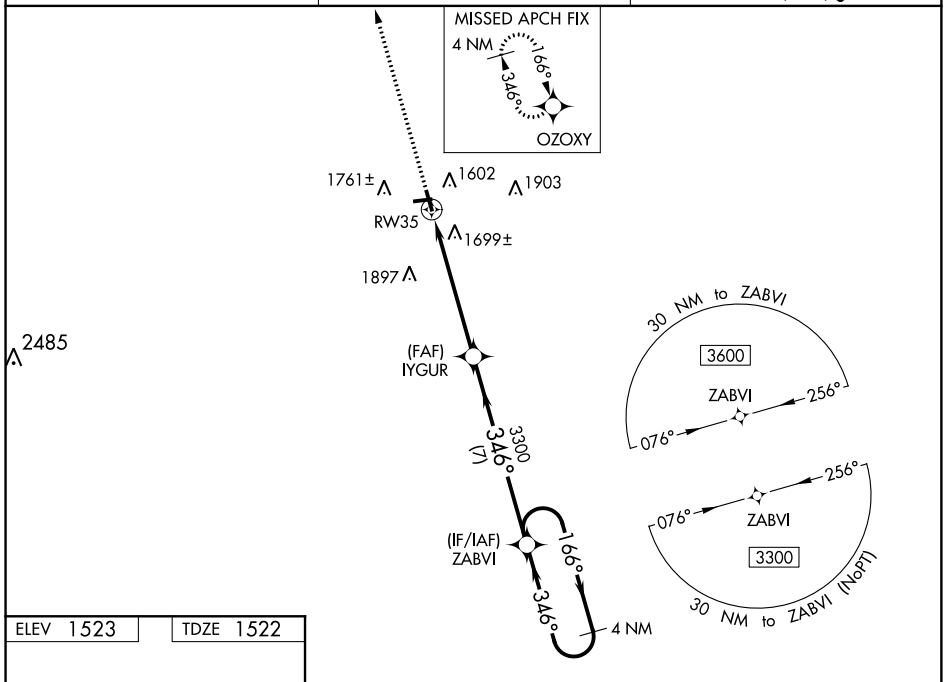
RNAV (GPS) RWY 35

LANGLADE COUNTY (AIG)

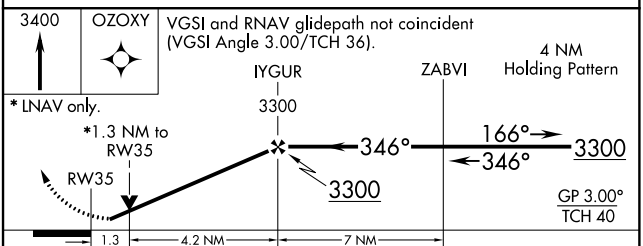
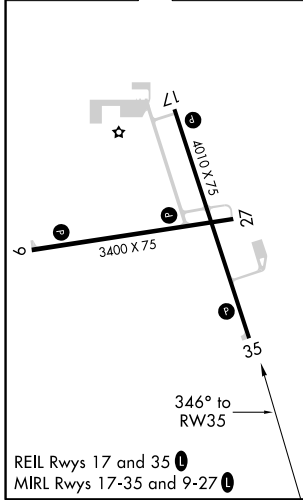
⚠ For uncompensated Baro-VNAV systems, LNAV/VNAV NA below -18°C (0°F) or above 54°C (130°F). DME/DME RNP-0.3 NA. Baro-VNAV and VDP NA when using Wausau Downtown altimeter setting. Helicopter visibility reduction below 3/4 SM NA. When local altimeter setting not received, use Wausau Downtown altimeter setting; increase all DA 105 feet and visibility LPV all Cats 1/4 mile and LNAV/VNAV all Cats 3/4 mile; increase all MDA 120 feet and visibility LNAV Cat C/D and Circling Cat C 1/2 mile and Circling Cat D 1/4 mile.

MISSED APPROACH: Climb to 3400 direct OZOXY and hold.

AWOS-3 119.075	MINNEAPOLIS CENTER 124.4 317.7	UNICOM 122.8 (CTAF) 0
--------------------------	--	---------------------------------



ELEV 1523	TDZE 1522
-----------	-----------



CATEGORY	A	B	C	D
LPV DA		1772-1	250 (300-1)	
LNAV/ VNAV DA		2019-1 ³ / ₄	497 (500-1 ³ / ₄)	
LNAV MDA	1960-1	438 (500-1)	1960-1 ¹ / ₄	438 (500-1 ¹ / ₄)
CIRCLING	2120-1	597 (600-1)	2120-1 ¹ / ₂ 597 (600-1 ¹ / ₂)	2120-2 597 (600-2)

EC-3, 10 OCT 2019 to 07 NOV 2019

EC-3, 10 OCT 2019 to 07 NOV 2019