

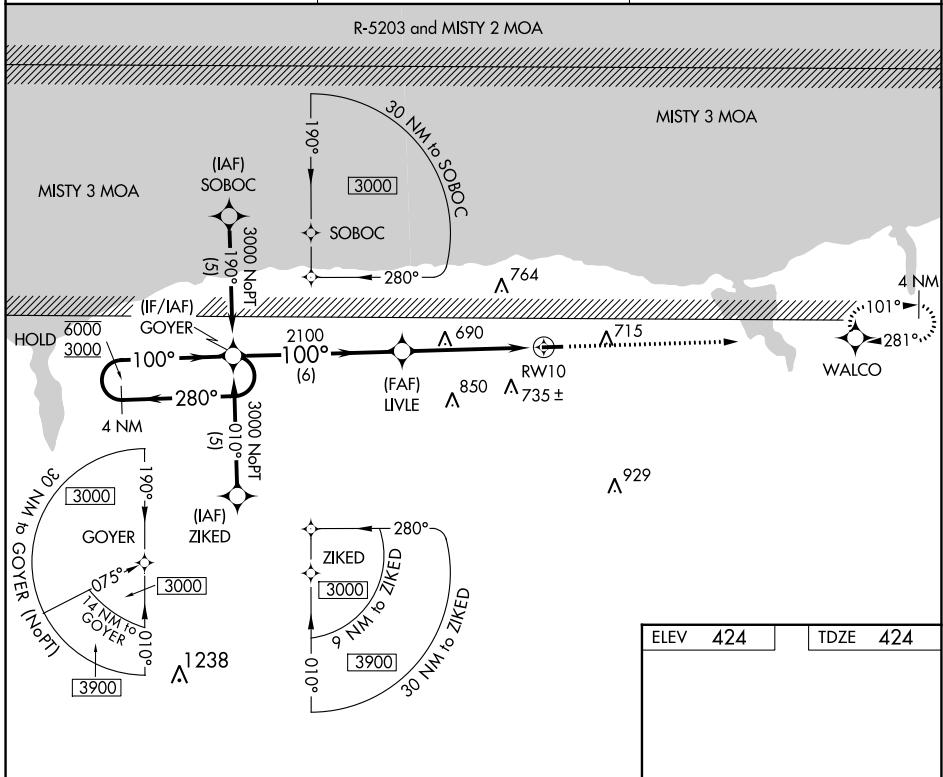
APP CRS	Rwy Idg	<b>3803</b>
<b>100°</b>	TDZE	<b>424</b>
	Apt Elev	<b>424</b>

# RNAV (GPS) RWY 10

WILLIAMSON/SODUS (SDC)

RNP APCH - GPS.	<p>▼ Procedure NA at night. Rwy 10 helicopter visibility reduction below 1 SM NA.</p> <p>▲ When local altimeter setting not received, use Rochester altimeter setting and increase all MDAs 80 feet and LNAV visibility Cat C ¾ SM, and Circling visibility Cat C ¼ SM.</p>	<p>MISSED APPROACH: Climb to 3100 direct WALCO and hold.</p> <p>Continue climb-in-hold to 3100.</p>
-----------------	---	---

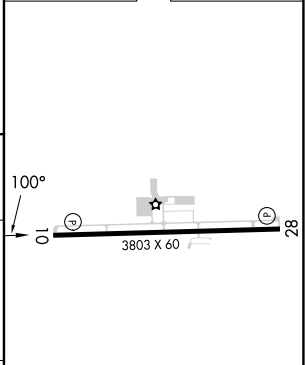
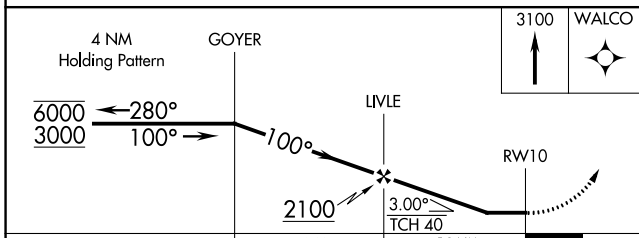
AWOS-3 <b>124.2</b>	ROCHESTER APP CON <b>119.55 269.6</b>	UNICOM <b>122.8 (CTAF) 0</b>
------------------------	--	---------------------------------



NE-2, 03 OCT 2024 to 31 OCT 2024

NE-2, 03 OCT 2024 to 31 OCT 2024

ELEV	<b>424</b>	TDZE	<b>424</b>
------	------------	------	------------



CATEGORY	A	B	C	D
LNAV MDA	940-1	516 (600-1)	940-1 3/8 516 (600-1 3/8)	NA
CIRCLING	1000-1 576 (600-1)	1020-1 596 (600-1)	1120-2 696 (700-2)	NA

MIRL Rwy 10-28 0  
REIL Rwy 10 and 28 0