

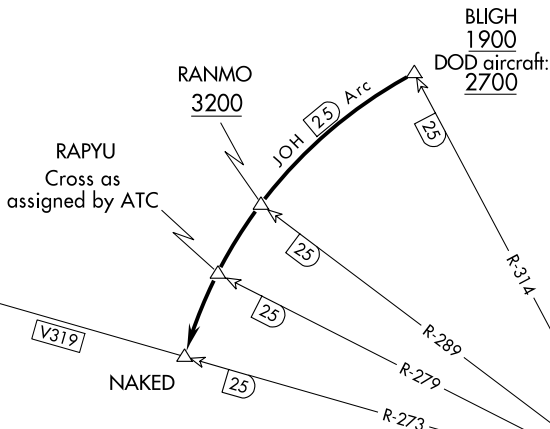
(NAKED6.NAKED) 23334  
**NAKED SIX DEPARTURE**

AL-6213 (FAA)

VALDEZ PIONEER FLD (VDZ) (PAVD)  
VALDEZ, ALASKA

ANCHORAGE CENTER  
119.3 269.4  
JUNEAU RADIO  
122.2  
CTAF  
122.9

**TOP ALTITUDE:  
ASSIGNED BY ATC**



AK, 31 OCT 2024 to 26 DEC 2024

AK, 31 OCT 2024 to 26 DEC 2024

**TAKEOFF MINIMUMS**  
Rwy 6, 24: 2000-3 (DOD aircraft 3500-3)  
NA at night.

JOHNSTONE POINT  
116.7 JOH  
Chan 114

NOTE: Do not proceed CCW beyond BLIGH without ATC clearance.  
NOTE: DME required.

NOTE: Chart not to scale.

**DEPARTURE ROUTE DESCRIPTION**

Proceed in visual conditions from Valdez airport to BLIGH (JOH R-314/25 DME) to cross BLIGH at or above 1900' (visual conditions must be maintained from takeoff until established over BLIGH at or above 1900') (DOD aircraft: Cross BLIGH at or above 2700'). Proceed CCW on JOH 25 DME arc to NAKED; cross RANMO at or above 3200'. Cross RAPHU as assigned by ATC. Thence via (assigned route).

(NAKED6.NAKED) 21JUL16  
**NAKED SIX DEPARTURE**

VALDEZ, ALASKA  
VALDEZ PIONEER FLD (VDZ) (PAVD)