

| | | | |
|--|------------------------|-----------------------------|---|
| WAAS CH 40408 W17A | APP CRS 165° | Rwy Idg TDZE Apt Elev | 5002 607 610 |
|--|------------------------|-----------------------------|---|

RNAV (GPS) RWY 17

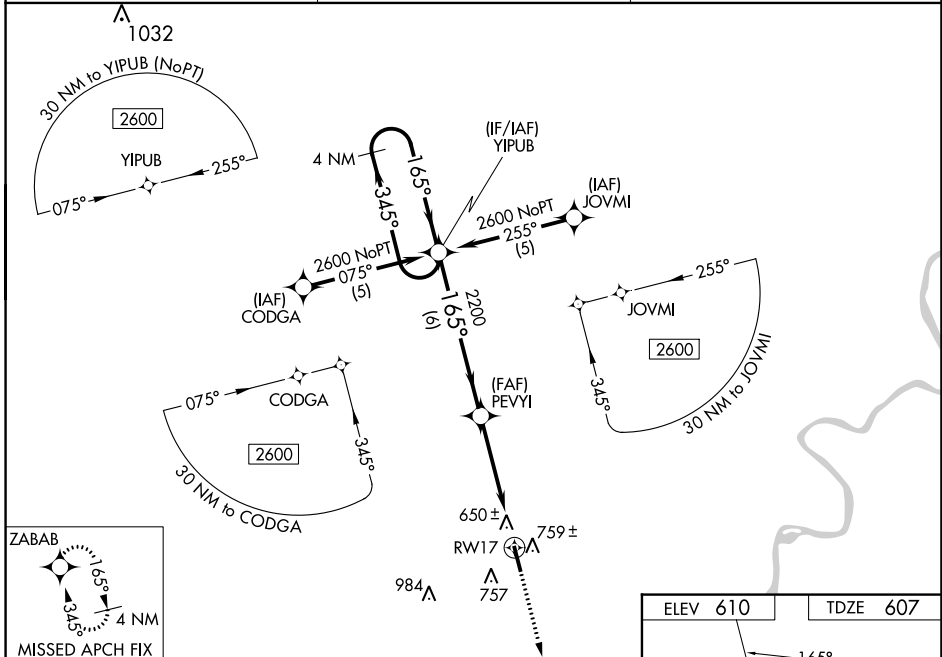
ROBERT SIBLEY (SZY)

RNP APCH - GPS.

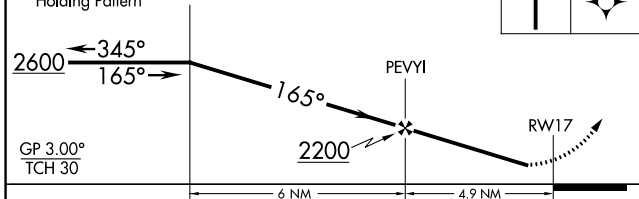
NA Baro-VNAV NA when using Mc Kellar-Sipes Rgnl altimeter setting. For uncompensated Baro-VNAV systems, LNAV/VNAV NA below -16°C or above 47°C. Helicopter visibility reduction below 1 SM not authorized. When local altimeter setting not received, use Mc Kellar-Sipes Rgnl altimeter setting: increase LPV DA to 959 and all visibilities ¼ SM, increase LNAV/VNAV DA to 1153 and all visibilities ¼ SM; increase all MDAs 100 feet and LNAV visibility Cat C and Circling visibility Cat D ¼ SM, and LNAV visibility Cat D ½ SM. Straight-in Rwy 17 NA at night, Circling Rwy 17, 35 NA at night.

MISSED APPROACH:
Climb to 2600 direct ZABAB and hold.

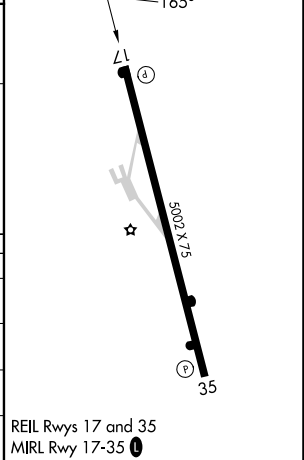
| | | |
|--------------------------|---------------------------------------|---------------------------------|
| AWOS-3 118.425 | MEMPHIS CENTER 124.35 318.1 | UNICOM 122.7 (CTAF) 0 |
|--------------------------|---------------------------------------|---------------------------------|



4 NM Holding Pattern YIPUB
VGSI and RNAV glidepath not coincident (VGSI Angle 3.00°/TCH 29).



| | |
|----------|----------|
| ELEV 610 | TDZE 607 |
|----------|----------|



| CATEGORY | A | B | C | D |
|--------------|----------------------|----------------------|----------------------|----------------------|
| LPV DA | 861-1 254 (300-1) | | | |
| LNAV/VNAV DA | 1055-1¾ 448 (500-1¾) | | | |
| LNAV MDA | 1020-1 413 (500-1) | 1020-1¼ 413 (500-1¼) | | |
| CIRCLING | 1060-1 450 (500-1) | 1080-1 470 (500-1) | 1080-1½ 470 (500-1½) | 1300-2¼ 690 (700-2¼) |

REIL Rwy 17 and 35
MRL Rwy 17-35 0

SE-1, 05 SEP 2024 to 03 OCT 2024

SE-1, 05 SEP 2024 to 03 OCT 2024