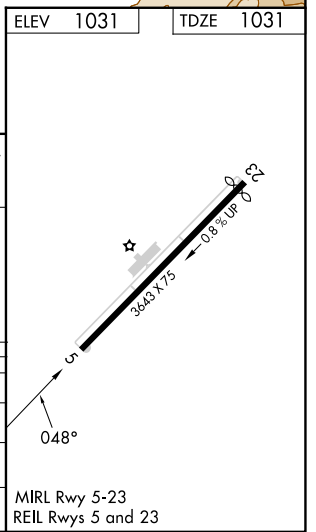
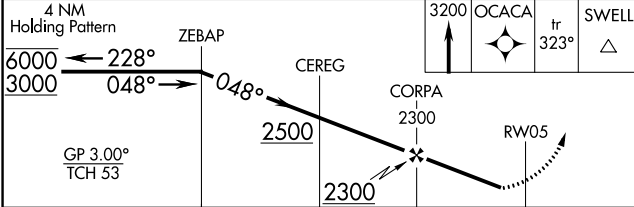
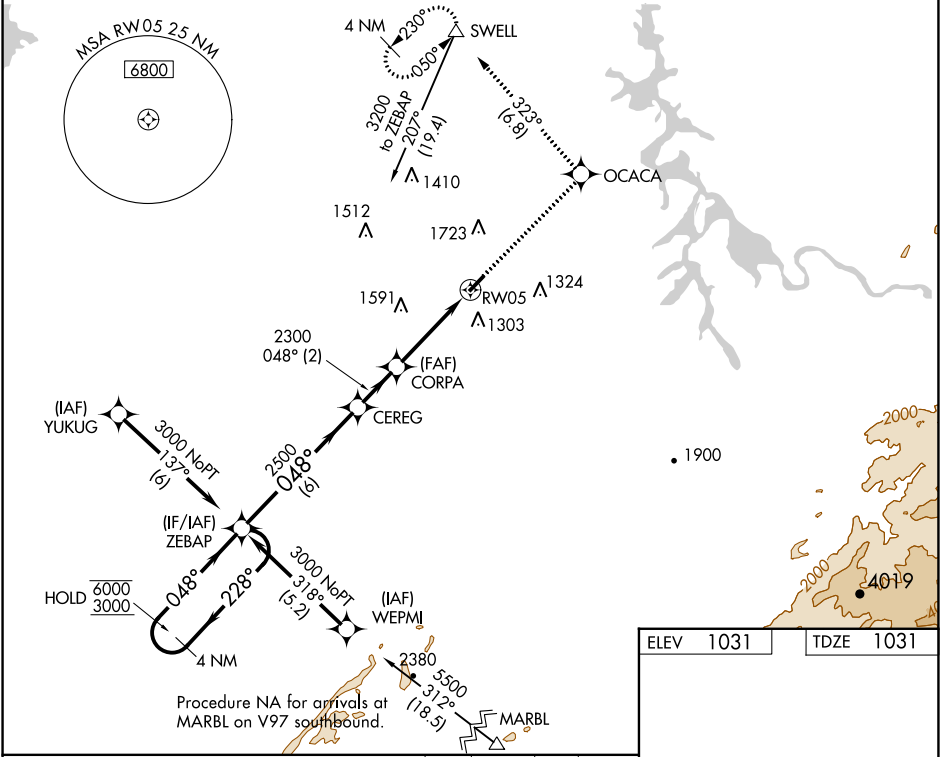


| | | | |
|-------------------------|------------------------|-----------------------------|---|
| WAAS CH 99531 | APP CRS 048° | Rwy Idg TDZE Apt Elev | 3643 1031 1031 |
| W05A | | | |

RNAV (GPS) RWY 5

MONROE COUNTY (MNV)

| | | |
|---|---|---|
| RNP APCH - GPS. | | MISSED APPROACH: Climb to 3200 direct OCACA and on track 323° to SWELL and hold. |
| ⚠️ Circling NA NW of Rwy 5-23. Procedure NA at night. Rwy 5 helicopter visibility reduction below 1 SM NA. For uncompensated Baro-VNAV systems, LNAV/VNAV NA below -17°C or above 54°C. | | |
| AWOS-3 118.475 | KNOXVILLE APP CON 123.9 353.6 | UNICOM 123.0 (CTAF) |



| | | | | |
|-------------------|------------|-----------------|-------------------------------|----|
| CATEGORY | A | B | C | D |
| LPV DA | 1395-1 | 364 (400-1) | | NA |
| LNAV/VNAV DA | 1538-1 3/8 | 507 (600-1 3/8) | | NA |
| LNAV MDA | 1680-1 | 649 (700-1) | 1680-1 7/8 649 (700-1 7/8) | NA |
| C CIRCLING | 1680-1 | 649 (700-1) | 1680-1 7/8 649 (700-1 7/8) | NA |

SE-1, 03 OCT 2024 to 31 OCT 2024

SE-1, 03 OCT 2024 to 31 OCT 2024