

APP CRS	Rwy Idg	3280
134°	TDZE	1161
	Apt Elev	1174

RNAV (GPS) RWY 13

HARRISON COUNTY (8G6)

RNP APCH.

▽ Rwy 13 helicopter visibility reduction below 1 SM NA. Use Wheeling altimeter setting; when not received, use Washington altimeter setting and increase all MDA 40 feet. Procedure NA at night.

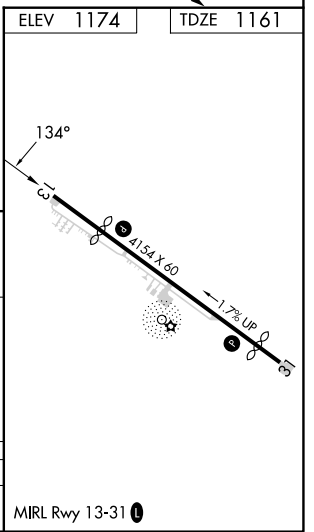
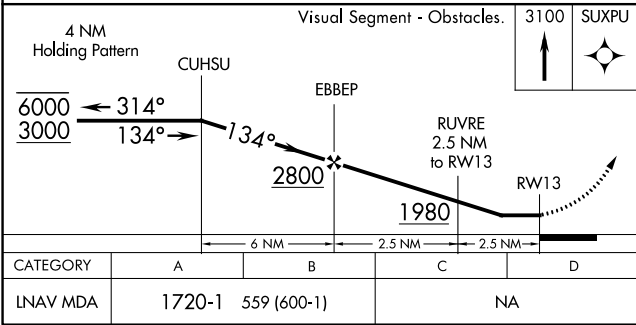
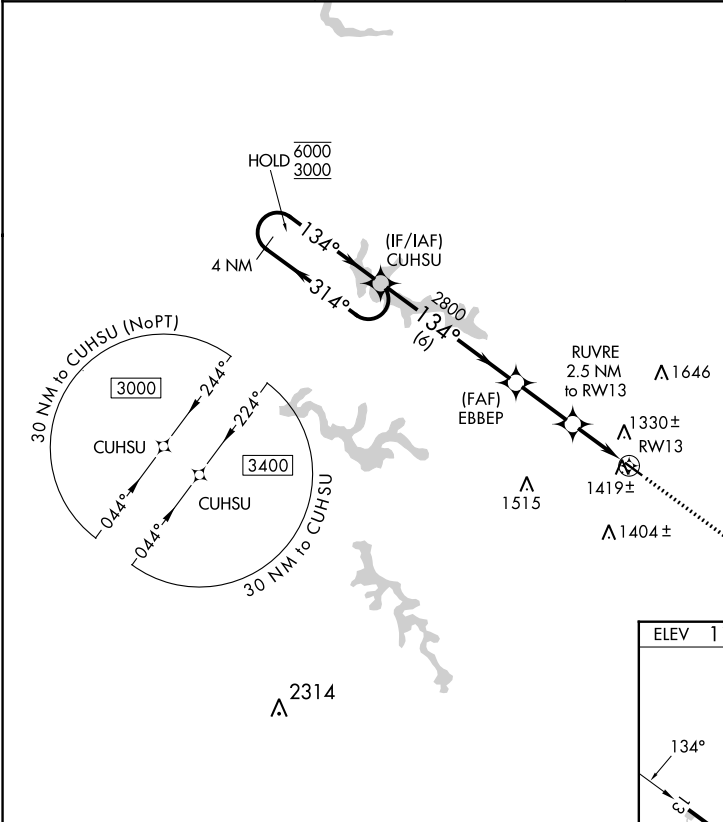
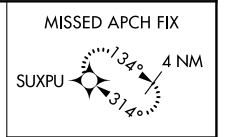
▲ NA

MISSED APPROACH: Climb to 3100 direct SUXPU and hold.

HLG ASOS
127.375

CLEVELAND CENTER
126.95 239.30

UNICOM
122.8 (CTAF) 0



CATEGORY	A	B	C	D
LNAV MDA	1720-1	559 (600-1)	NA	

EC-2, 31 OCT 2024 to 28 NOV 2024

EC-2, 31 OCT 2024 to 28 NOV 2024