

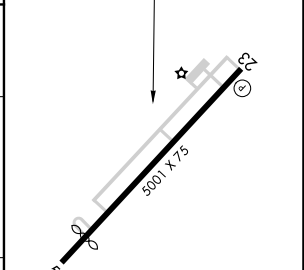
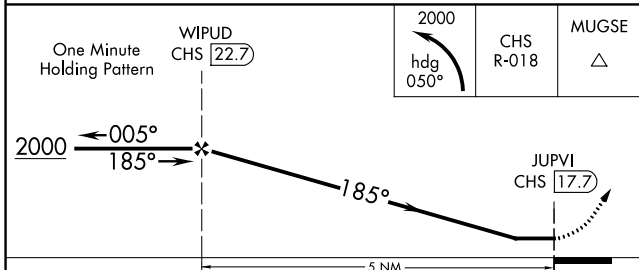
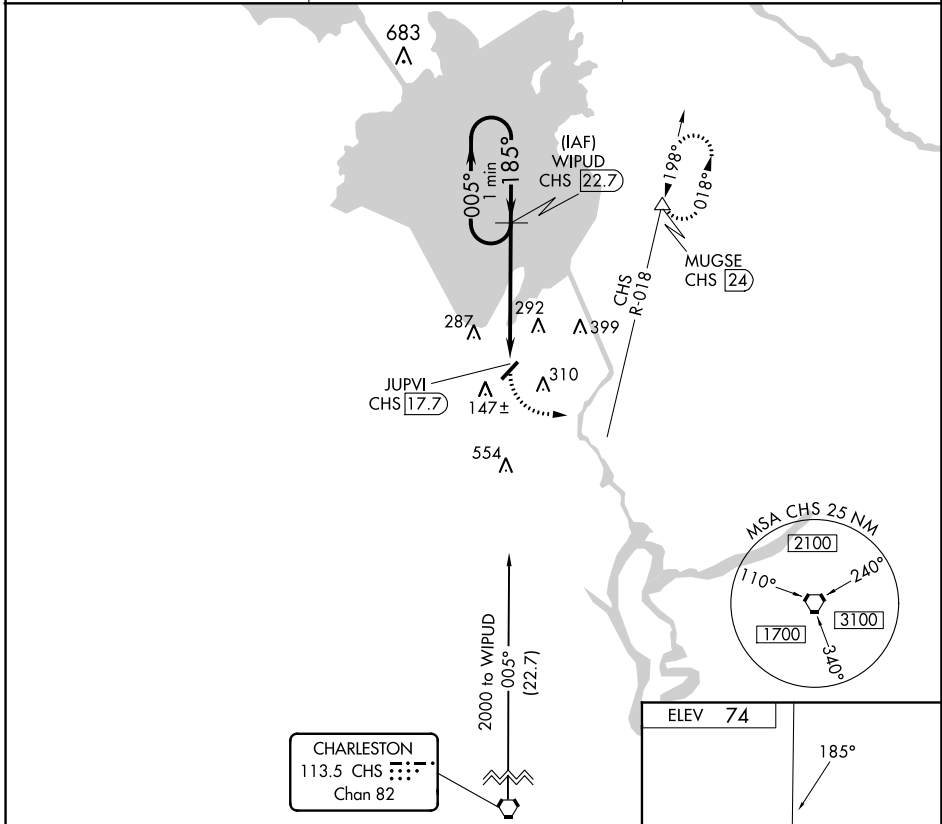
VORTAC CHS 113.5 Chan 82	APP CRS 185°	Rwy Idg TDZE Apt Elev	N/A N/A 74
--	------------------------	-----------------------------	---------------------------------------

VOR/DME-A
BERKELEY COUNTY (MKS)

NA Procedure NA at night. When local altimeter setting not received, use Charleston AFB/Intl altimeter setting: increase all MDA 60 feet and Cat C/D visibility ¼ SM. Helicopter visibility reduction below 1 SM NA.

MISSED APPROACH: Climbing left turn to 2000 via heading 050° and CHS R-018 to MUGSE/CHS 24 DME and hold.

AWOS-3 119.175	CHARLESTON APP CON 121.275 379.925	UNICOM 123.05 (CTAF)
--------------------------	--	--------------------------------



CATEGORY	A	B	C	D
CIRCLING	640-1	566 (600-1)	700-1¾ 626 (700-1¾)	860-2½ 786 (800-2½)

MIRL Rwy 5-23

SE-2, 31 OCT 2024 to 28 NOV 2024

SE-2, 31 OCT 2024 to 28 NOV 2024