

APP CRS	Rwy Idg	<b>4000</b>
<b>052°</b>	TDZE	<b>990</b>
	Apt Elev	<b>995</b>

# RNAV (GPS) RWY 5

TRI-STATE STEUBEN COUNTY (ANQ)

RNP APCH.

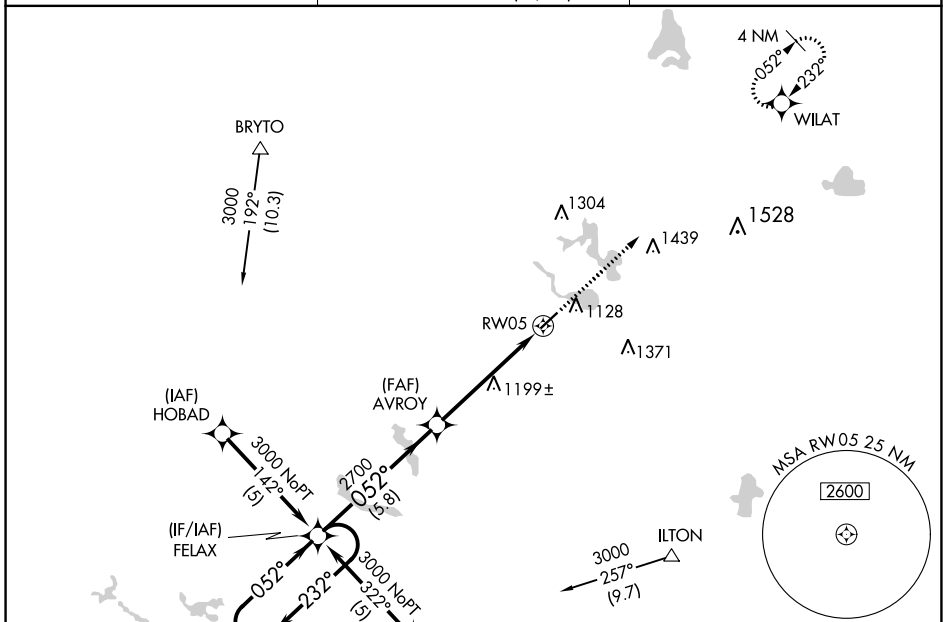
- For uncompensated Baro-VNAV systems, LNAV/VNAV NA below -16°C or above 54°C.
- Rwy 5 helicopter visibility reduction below 3/4 SM NA.

**MISSED APPROACH:**  
Climb to 3000 direct  
WILAT and hold.

AWOS-3  
**118.175**

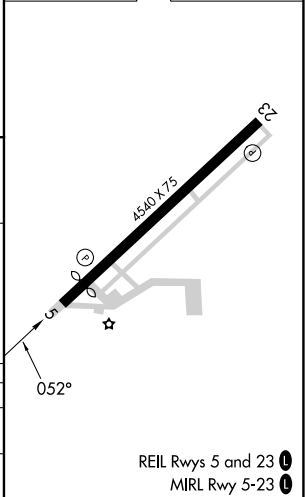
FORT WAYNE APP CON  
**127.2 284.6** (SW/NW)  
**132.15 284.6** (SE/NE)

UNICOM  
**123.075** (CTAF)



ELEV 995 TDZE 990

4 NM Holding Pattern FELAX 3000 GP 3.00° TCH 40	3000 ← 232° → 052°		3000 ↑ WILAT 
	2700 052°		* 1.4 NM to RWY 5 RWY 5 *LNNAV only
CATEGORY	A	B	C
LNAV/VNAV DA	1474-1 3/4		484 (500-1 3/4)
LNAV MDA	1460-1	470 (500-1)	1460-1 1/2 470 (500-1 1/2)



EC-2, 03 OCT 2024 to 31 OCT 2024

EC-2, 03 OCT 2024 to 31 OCT 2024