

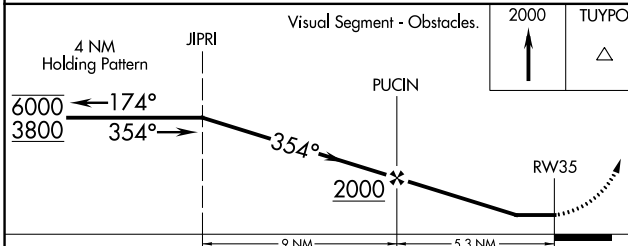
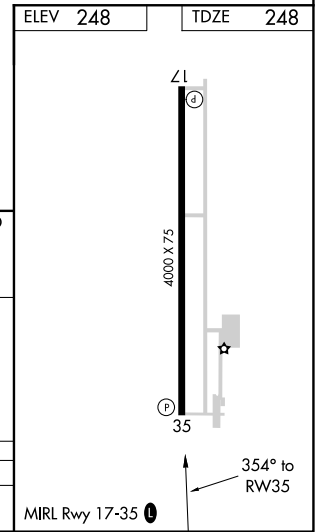
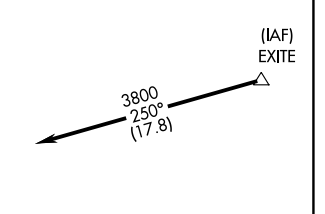
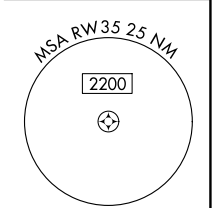
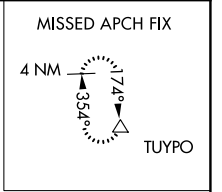
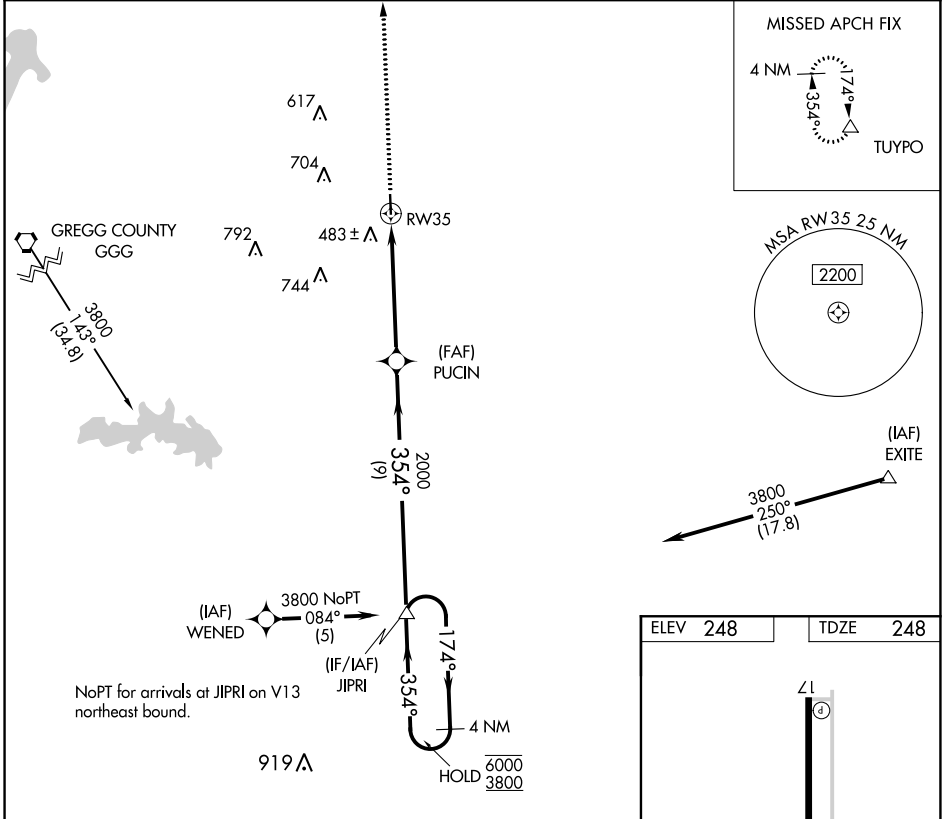
APP CRS	Rwy Idg	4000
354°	TDZE	248
	Apt Elev	248

RNAV (GPS) RWY 35

PANOLA COUNTY-SHARPE FLD (4F2)

RNP APCH-GPS.	MISSED APPROACH: Climb to 2000 direct TUYPO and hold.
⚠ Rwy 35 helicopter visibility reduction below 3/4 SM NA. When local altimeter setting not received, use Longview altimeter setting.	

AWOS-3PT 121.125	SHREVEPORT APP CON * 119.9 335.55	UNICOM 122.8 (CTAF) 0
----------------------------	---	---------------------------------



CATEGORY	A	B	C	D
LNAV MDA	840-1	592 (600-1)	840-1½ 592 (600-1½)	NA

SC-2, 03 OCT 2024 to 31 OCT 2024

SC-2, 03 OCT 2024 to 31 OCT 2024