

| | | |
|-------------|----------|-------------|
| APP CRS | Rwy Idg | 4000 |
| 174° | TDZE | 247 |
| | Apt Elev | 248 |

RNAV (GPS) RWY 17

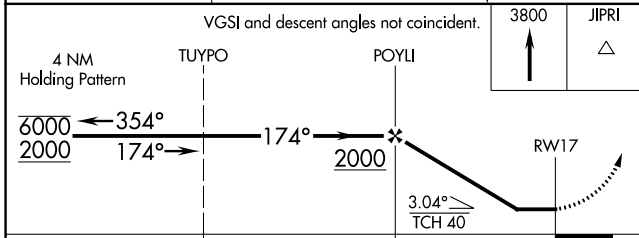
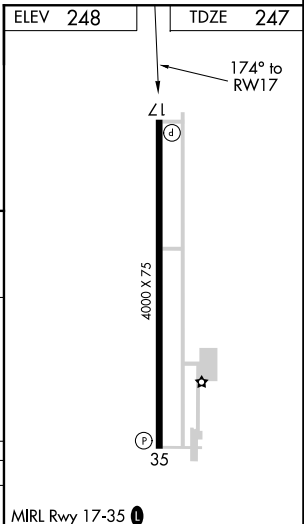
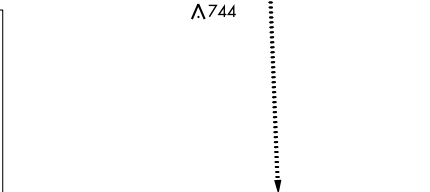
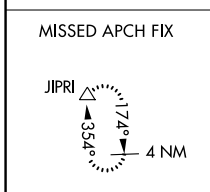
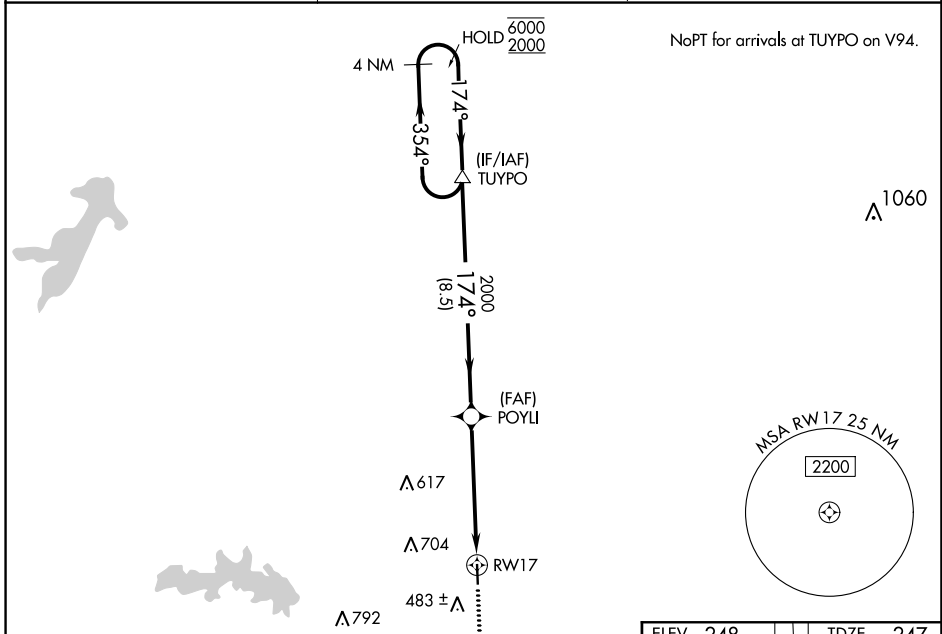
PANOLA COUNTY-SHARPE FLD (4F2)

RNP APCH-GPS.

▲ Procedure NA at night. Rwy 17 helicopter visibility reduction below 1 SM NA. When local altimeter setting not received, use Longview altimeter setting.

MISSED APPROACH: Climb to 3800 direct JIPRI and hold, continue climb-in-hold to 3800.

| | | |
|----------------------------|---|---------------------------------|
| AWOS-3PT 121.125 | SHREVEPORT APP CON ★ 119.9 335.55 | UNICOM 122.8 (CTAF) 0 |
|----------------------------|---|---------------------------------|



| CATEGORY | A | B | C | D |
|----------|-------|-------------|------------------------------|----|
| LNAV MDA | 760-1 | 513 (600-1) | 760-1 3/8 513 (600-1 3/8) | NA |

SC-2, 08 AUG 2024 to 05 SEP 2024

SC-2, 08 AUG 2024 to 05 SEP 2024