

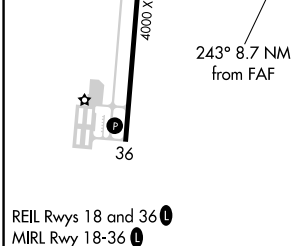
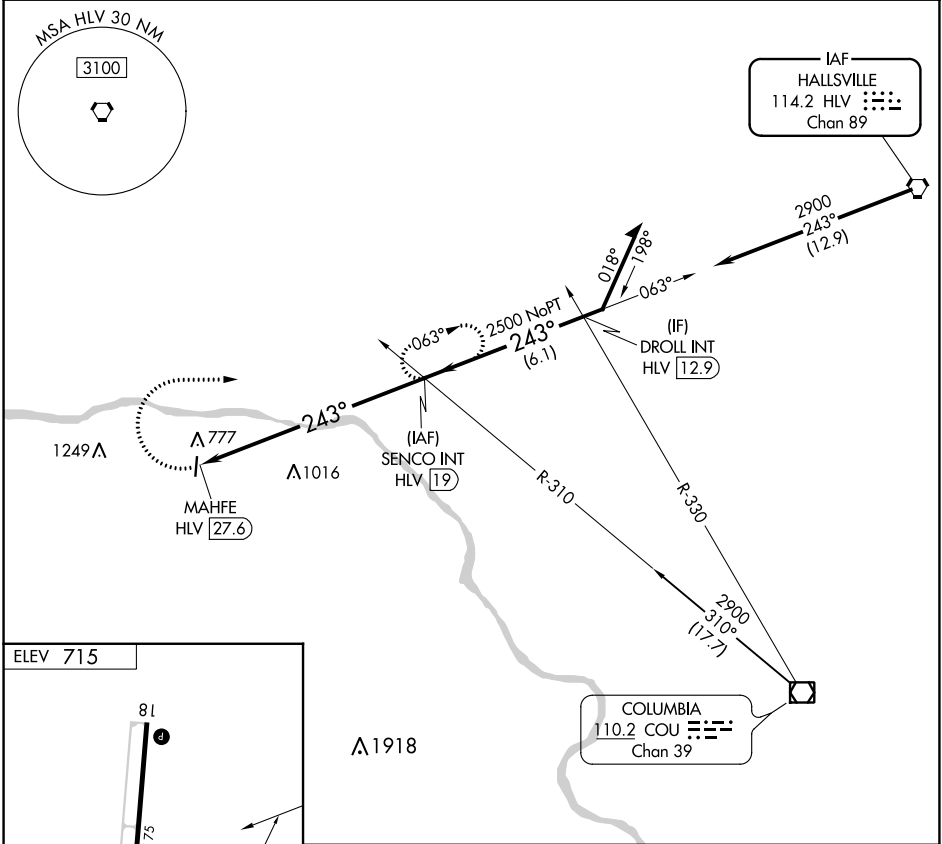
VORTAC HLV 114.2 Chan 89	APP CRS 243°	Rwy Idg TDZE Apt Elev	N/A N/A 715
--	------------------------	-----------------------------	--

VOR-A
JESSE VIERTEL MEML (V.E.R.)

▼ Rwy 36 helicopter visibility reduction below 1 SM NA.
▲ NA Circling Rwy 36 NA at night.

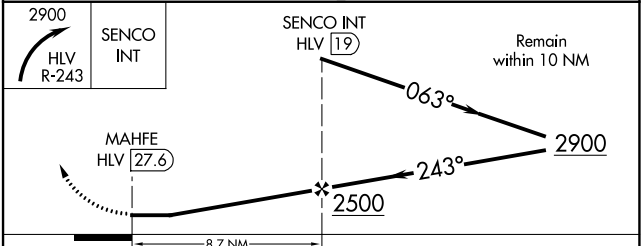
MISSED APPROACH: Climbing right turn to 2900 via HLV 2900 R-243 to SENCO INT/HLV 19 DME and hold.

AWOS-3PT 119.625	MIZZU APP CON 124.375	UNICOM 122.7 (CTAF)
----------------------------	---------------------------------	-------------------------------



REIL Rwy 18 and 36 **Ⓛ**
MIRL Rwy 18-36 **Ⓛ**

FAF to MAP 8.7 NM					
Knots	60	90	120	150	180
Min:Sec	8:42	5:48	4:21	3:29	2:54



CATEGORY	A	B	C	D
CIRCLING	1900-1¼ 1185 (1200-1¼)	1900-1½ 1185 (1200-1½)	1900-3 1185 (1200-3)	NA

NC-3, 31 OCT 2024 to 28 NOV 2024

NC-3, 31 OCT 2024 to 28 NOV 2024