

WINCHESTER, INDIANA

AL-6189 (FAA)

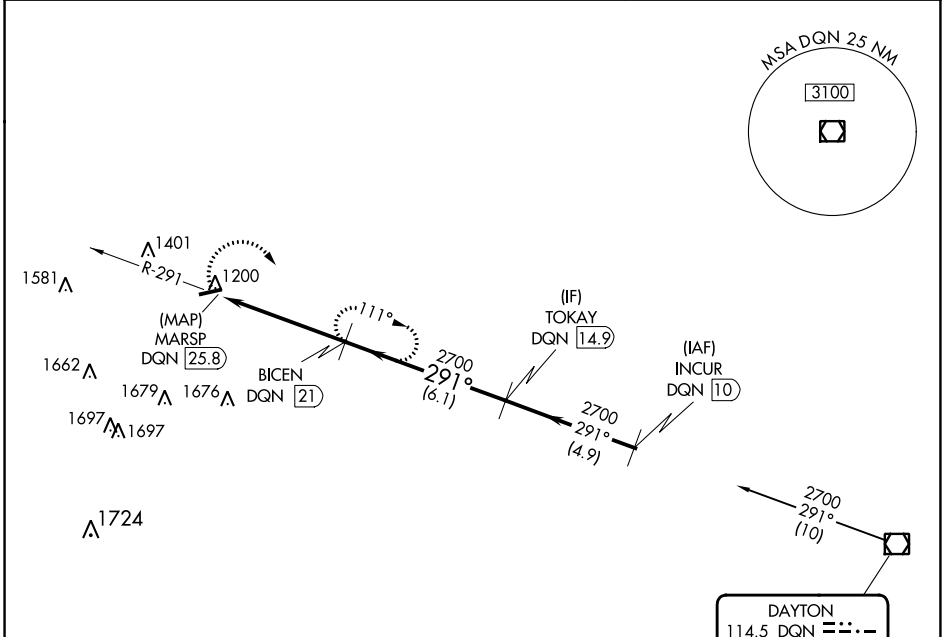
24137

VOR/DME DQN 114.5 Chan 92	APP CRS 291°	Rwy Idg TDZE Apt Elev N/A N/A 1123
---	------------------------	--

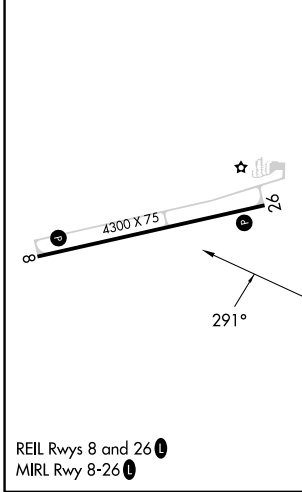
VOR-A
RANDOLPH COUNTY (I22)

DME required. ▼ ▲ NA	MISSED APPROACH: Climbing right turn to 2700 on DQN VOR/DME R-291 to BICEN/21 DME and hold.
----------------------------	--

VES AWOS-3T 125.9	COLUMBUS APP CON 134.45 352.05	UNICOM 123.0 (CTAF) 1
-----------------------------	--	--



ELEV 1123



REIL Rwys 8 and 26 **1**
MIRL Rwy 8-26 **1**

Procedure NA for arrival on DQN VOR/DME
airway radials 234 CW 329.

	2700 DQN R-291	BICEN DQN 21	BICEN DQN 21	TOKAY DQN 14.9
		MARSP DQN 25.8	2700	2700
		4.8 NM	6.1 NM	
CATEGORY	A	B	C	D
C CIRCLING	1700-1	577 (600-1)	1820-2 697 (700-2)	NA

WINCHESTER, INDIANA
Amdt 10 13SEP18

40°10'N-84°56'W

RANDOLPH COUNTY (I22)
VOR-A

EC-2, 03 OCT 2024 to 31 OCT 2024

EC-2, 03 OCT 2024 to 31 OCT 2024