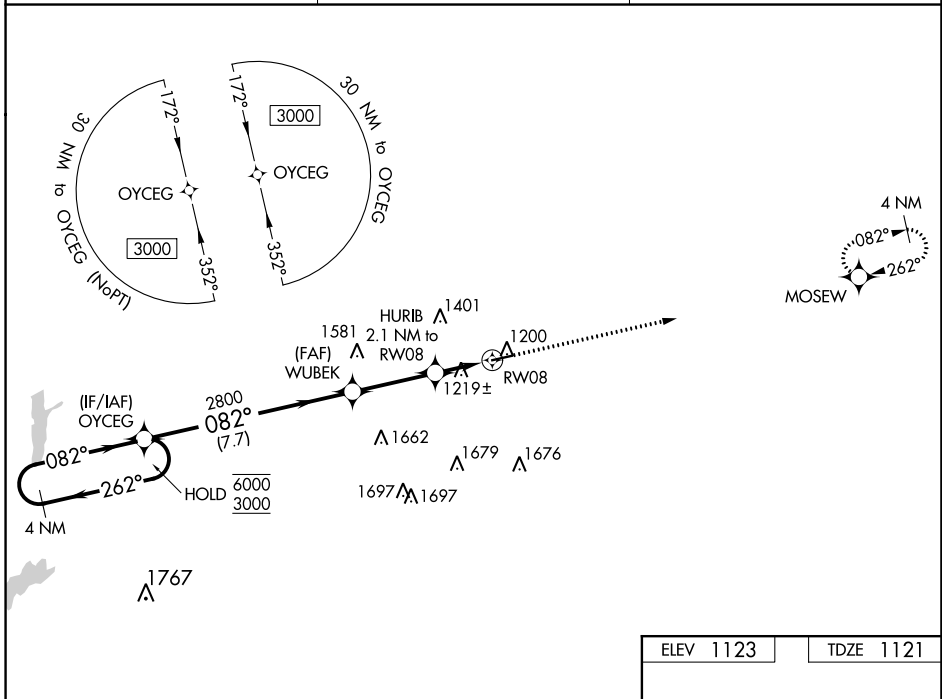


WAAS CH 90420 W08A	APP CRS 082°	Rwy Idg TDZE Apt Elev	4300 1121 1123
--	------------------------	-----------------------------	---

RNAV (GPS) RWY 8

RANDOLPH COUNTY (I22)

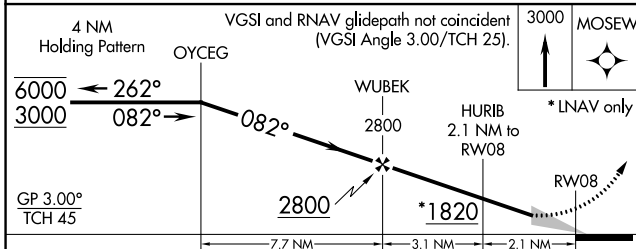
RNP APCH.		MISSED APPROACH: Climb to 3000 direct MOSEW and hold.
	Baro-VNAV NA.	
VES AWOS-3T 125.9	COLUMBUS APP CON 134.45 352.05	UNICOM 123.0 (CTAF)



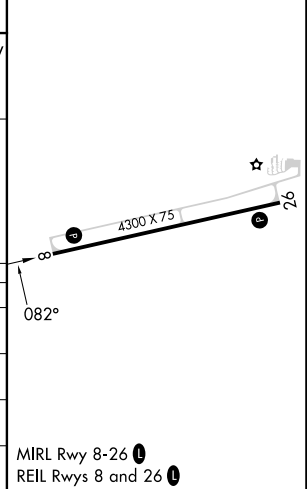
EC-2, 08 AUG 2024 to 05 SEP 2024

EC-2, 08 AUG 2024 to 05 SEP 2024

ELEV 1123	TDZE 1121
-----------	-----------



CATEGORY	A	B	C	D
LPV DA	1430-7/8	309 (400-7/8)		NA
LNAV/VNAV DA	1430-7/8	309 (400-7/8)		NA
LNAV MDA	1560-1	439 (500-1)	1560-1 1/4 439 (500-1 1/4)	NA
CIRCLING	1620-1	497 (500-1)	1820-2 697 (700-2)	NA



MIRL Rwy 8-26
REIL Rwy 8 and 26