

APP CRS 002°	Rwy Idg 5001
	TDZE 673
	Apt Elev 679

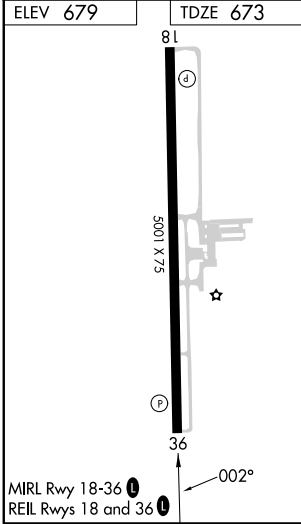
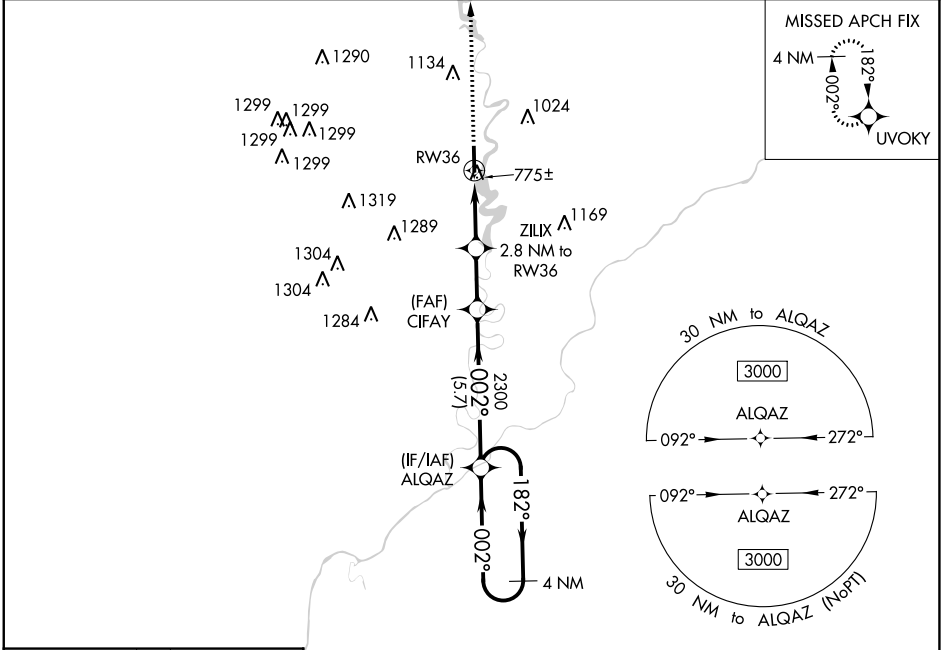
RNAV (GPS) RWY 36

WHITE COUNTY (MCX)

▽ DME/DME RNP-0.3 NA. Straight-in Rwy 36 NA at night, Circling Rwy 36 NA at night. Rwy 36 helicopter visibility reduction below 1 SM NA.

▲ MISSED APPROACH: Climb to 3000 direct UVOKY and hold.

AWOS-3P 124.05	GRISSEM APP CON ★ 123.85 291.675	UNICOM 122.8 (CTAF) 0
--------------------------	--	---------------------------------



3000	UVOKY	VGSJ and descent angles not coincident (VGSJ Angle 4.00/TCH 25).		4 NM Holding Pattern															
<table border="1"> <tr> <th>CATEGORY</th> <th>A</th> <th>B</th> <th>C</th> <th>D</th> </tr> <tr> <td>LNAV MDA</td> <td colspan="4">1040-1 367 (400-1)</td> </tr> <tr> <td>C CIRCLING</td> <td>1200-1 521 (600-1)</td> <td>1340-1 661 (700-1)</td> <td>1500-2½ 821 (900-2½)</td> <td>1500-2¾ 821 (900-2¾)</td> </tr> </table>	CATEGORY	A	B	C	D	LNAV MDA	1040-1 367 (400-1)				C CIRCLING	1200-1 521 (600-1)	1340-1 661 (700-1)	1500-2½ 821 (900-2½)	1500-2¾ 821 (900-2¾)				
CATEGORY	A	B	C	D															
LNAV MDA	1040-1 367 (400-1)																		
C CIRCLING	1200-1 521 (600-1)	1340-1 661 (700-1)	1500-2½ 821 (900-2½)	1500-2¾ 821 (900-2¾)															

EC-2, 31 OCT 2024 to 28 NOV 2024

EC-2, 31 OCT 2024 to 28 NOV 2024