

PUNTA GORDA, FLORIDA

AL-6178 (FAA)

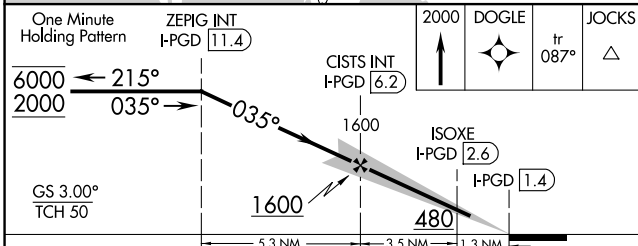
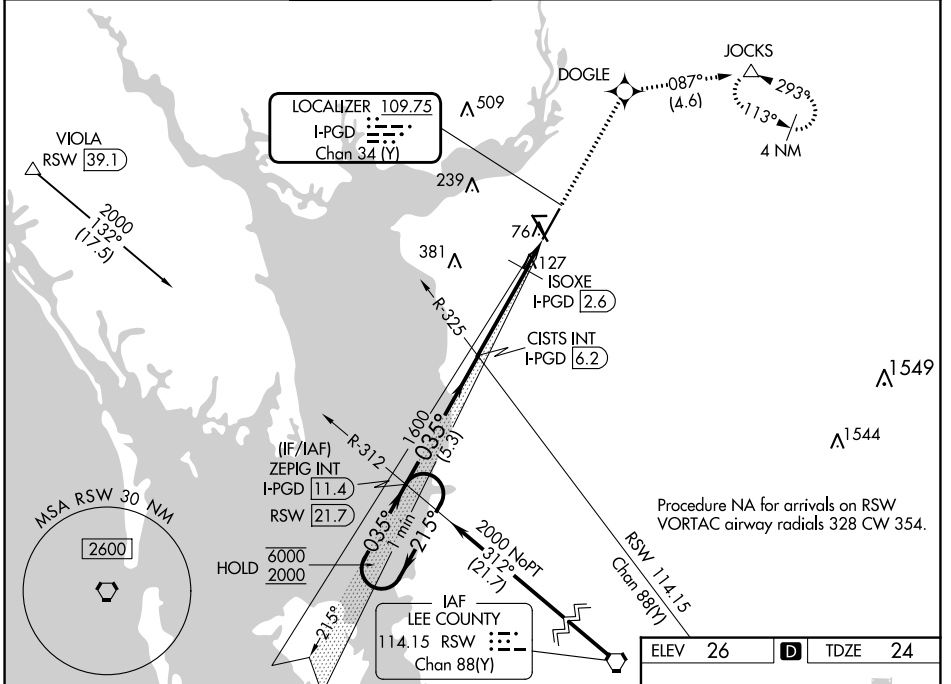
24249

LOC/DME I-PGD 109.75 Chan 34 (Y)	APP CRS 035°	Rwy Idg TDZE Apt Elev	7193 24 26
--	------------------------	-----------------------------	---------------------------------------

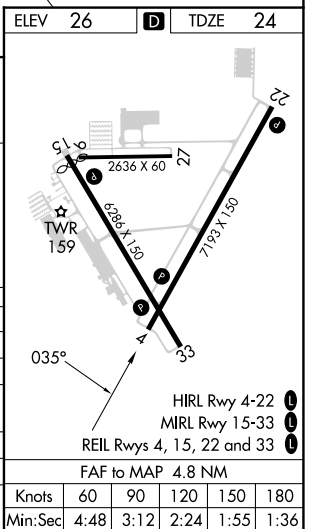
ILS or LOC RWY 4

PUNTA GORDA (PGD)

RNP APCH - GPS.		MISSED APPROACH: Climb to 2000 direct DOGLE and on track 087° to JOCKS and hold.				
ATIS ★ 135.675	FORT MYERS APP CON ★ 127.05 306.2	PUNTA GORDA TOWER ★ 121.0 (CTAF) 0	GND CON 119.55	CLNC DEL 119.55	CLNC DEL 127.05 (When twr closed)	UNICOM 122.975



CATEGORY	A	B	C	D
S-ILS 4		256-3/4	232 (300-3/4)	
S-LOC 4	480-1	456 (500-1)	480-1 3/8	456 (500-1 3/8)
C CIRCLING	480-1 454 (500-1)	580-1 554 (600-1)	600-1 1/2 574 (600-1 1/2)	740-2 1/4 714 (800-2 1/4)
ISOXE FIX MINIMUMS (DME REQUIRED)				
S-LOC 4	380-1	356 (400-1)		
C CIRCLING	460-1 434 (500-1)	580-1 554 (600-1)	600-1 1/2 574 (600-1 1/2)	740-2 1/4 714 (800-2 1/4)



SE-3, 31 OCT 2024 to 28 NOV 2024

SE-3, 31 OCT 2024 to 28 NOV 2024

PUNTA GORDA, FLORIDA
Amdt 1 05SEP24

26°55'N-81°59'W

PUNTA GORDA (PGD)

ILS or LOC RWY 4

FAC to MAP 4.8 NM	Knots	60	90	120	150	180
	Min:Sec	4:48	3:12	2:24	1:55	1:36