

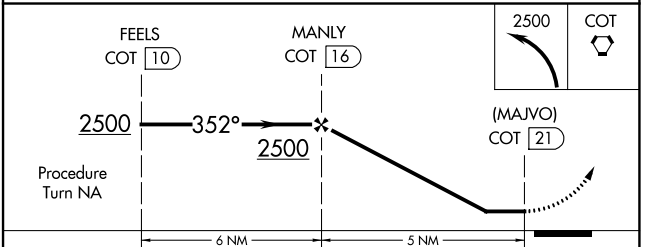
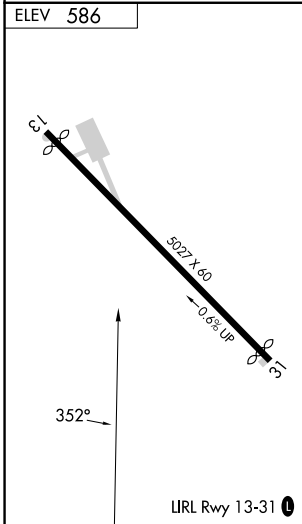
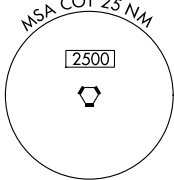
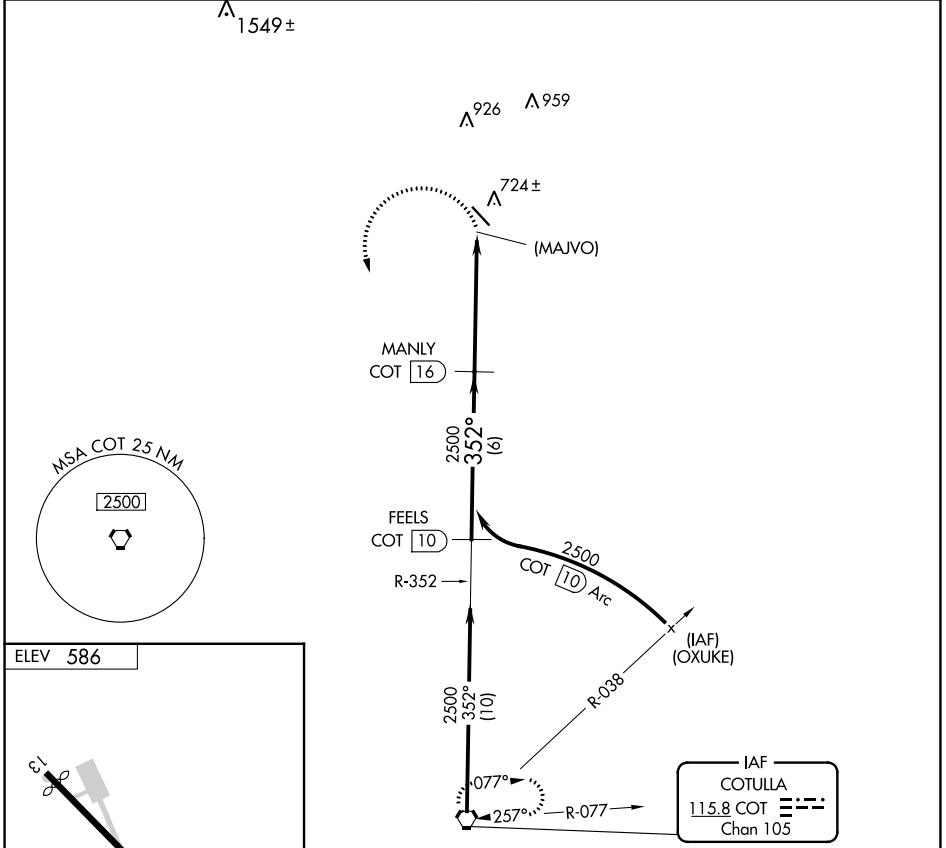
VORTAC COT 115.8 Chan 105	APP CRS 352°	Rwy Idg TDZE Apt Elev	N/A N/A 586
---	------------------------	-----------------------------	--

VOR/DME or GPS-A

MC KINLEY FLD (T3 \emptyset)

NA	Use Cotulla altimeter setting. Procedure NA at night.	MISSED APPROACH: Climbing left turn to 2500 direct COT VORTAC and hold.
-----------	--	--

HOUSTON CENTER 134.6 322.5	UNICOM 122.8 (CTAF) \emptyset
--------------------------------------	--



CATEGORY	A	B	C	D
CIRCLING	1120-1	534 (600-1)	1120-1½ 534 (600-1½)	NA

SC-3, 31 OCT 2024 to 28 NOV 2024

SC-3, 31 OCT 2024 to 28 NOV 2024