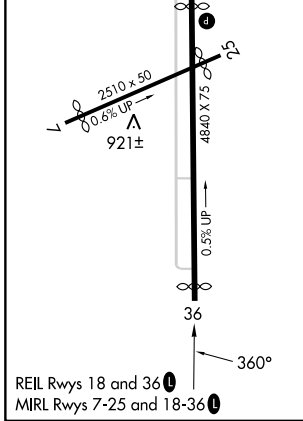
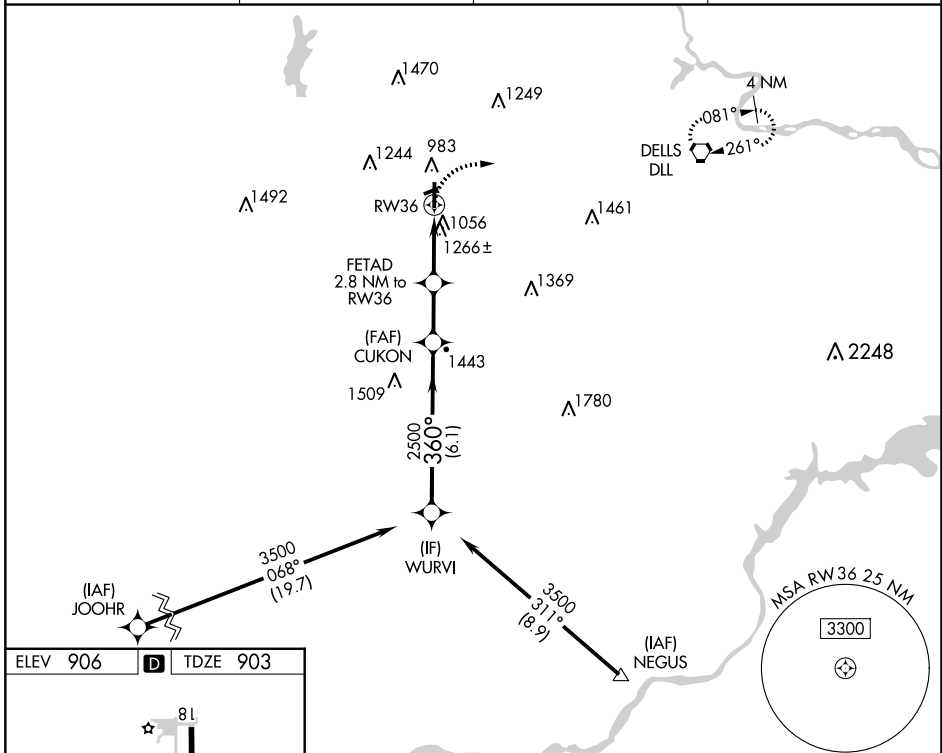


| | | | |
|--|------------------------|-----------------------------|---|
| WAAS CH 82727 W36A | APP CRS 360° | Rwy Idg TDZE Apt Elev | 4100 903 906 |
|--|------------------------|-----------------------------|---|

RNAV (GPS) RWY 36

REEDSBURG MUNI (C35)

| | | | |
|--|--|--|--|
| RNP APCH - GPS. | | MISSED APPROACH: Climbing right turn to 3500 direct DLL VORTAC and hold, continue climb-in-hold to 3500. | |
| <p>▼ Procedure NA at night.</p> <p>▲ Rwy 36 helicopter visibility reduction below 1 SM NA.</p> | | AWOS-3PT 118.95 | DLL AWOS-3 118.325 |
| | | MADISON APP CON ★ 135.45 343.7 | UNICOM 122.8 (CTAF) 0 |



| | | | | | |
|-------------------|--------|-----------------------------|----|--------|-----|
| WURVI | | Visual Segment - Obstacles. | | 3500 | DLL |
| 3500 | | 360° | | | |
| CUKON | | FETAD 2.8 NM to RW36 | | | |
| 2500 | | 1800 | | RW36 | |
| 6.1 NM | | 2.1 NM | | 2.8 NM | |
| CATEGORY | A | B | C | D | |
| LP MDA | 1560-1 | 657 (700-1) | NA | | |
| LNAV MDA | 1580-1 | 677 (700-1) | NA | | |
| C CIRCLING | 1600-1 | 694 (700-1) | NA | | |

EC-3, 31 OCT 2024 to 28 NOV 2024

EC-3, 31 OCT 2024 to 28 NOV 2024