

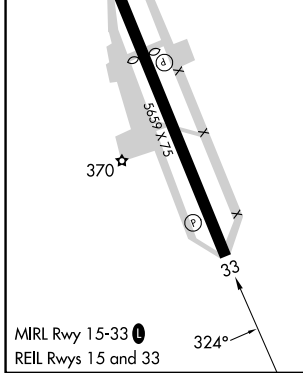
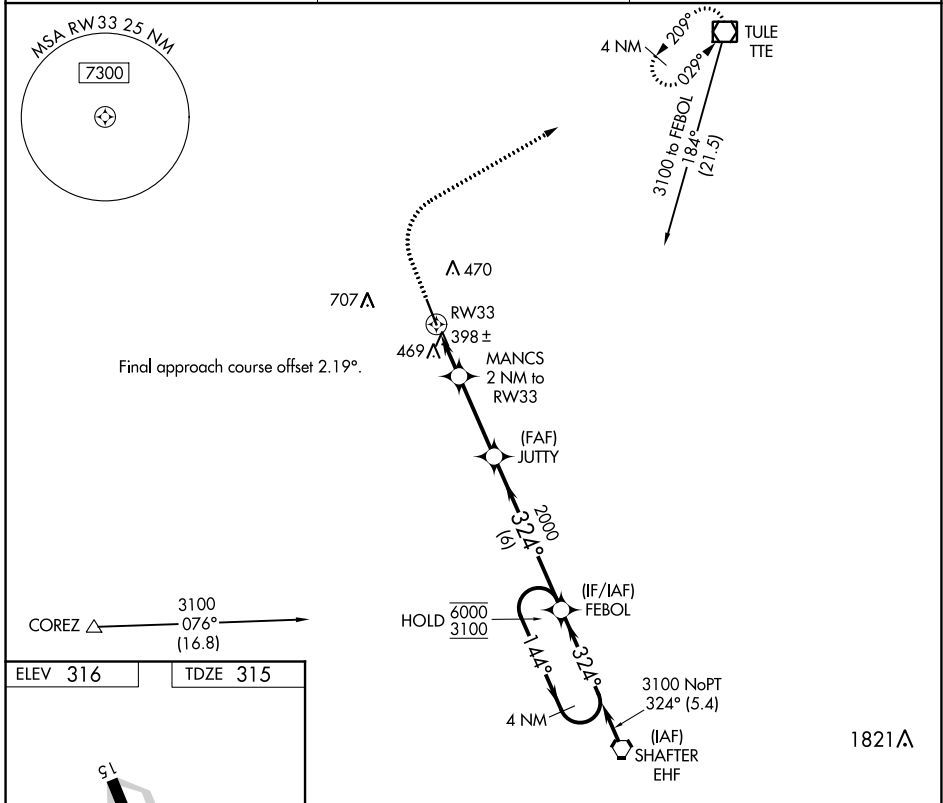
APP CRS	Rwy Idg	5659
324°	TDZE	315
	Apt Elev	316

RNAV (GPS) RWY 33

DELANO MUNI (DLO)

RNP APCH - GPS.	MISSED APPROACH: Climb to 800 then climbing right turn to 3100 direct TTE VOR/DME and hold.
<p>▼ Circling NA southwest of Rwy 15-33.</p> <p>▲ When local altimeter setting not received, procedure NA.</p>	

AWOS-3P 119.55	BAKERSFIELD APP CON ★ 118.9	UNICOM 122.8 (CTAF) 0
--------------------------	---------------------------------------	---------------------------------



800	3100	TTE	VGSIs and descent angles not coincident.				
				MANCS 2 NM to RWY 33	JUTTY	FEBOL	4 NM Holding Pattern
				1.2 NM to RWY 33	3.00° TCH 40	324°	144°
1.2 NM		0.9 NM		3.1 NM		6 NM	
CATEGORY	A		B		C		D
LNAV MDA	720-1 405 (500-1)		720-1½ 405 (500-1½)				
CIRCLING	760-1 444 (500-1)		780-1 464 (500-1)		820-1½ 504 (600-1½)		960-2 644 (700-2)

SW-3, 03 OCT 2024 to 31 OCT 2024

SW-3, 03 OCT 2024 to 31 OCT 2024