

WAAS CH 82404 W28A	APP CRS 281°	Rwy Idg TDZE Apt Elev	4001 928 928
--	------------------------	-----------------------------	---

RNAV (GPS) RWY 28

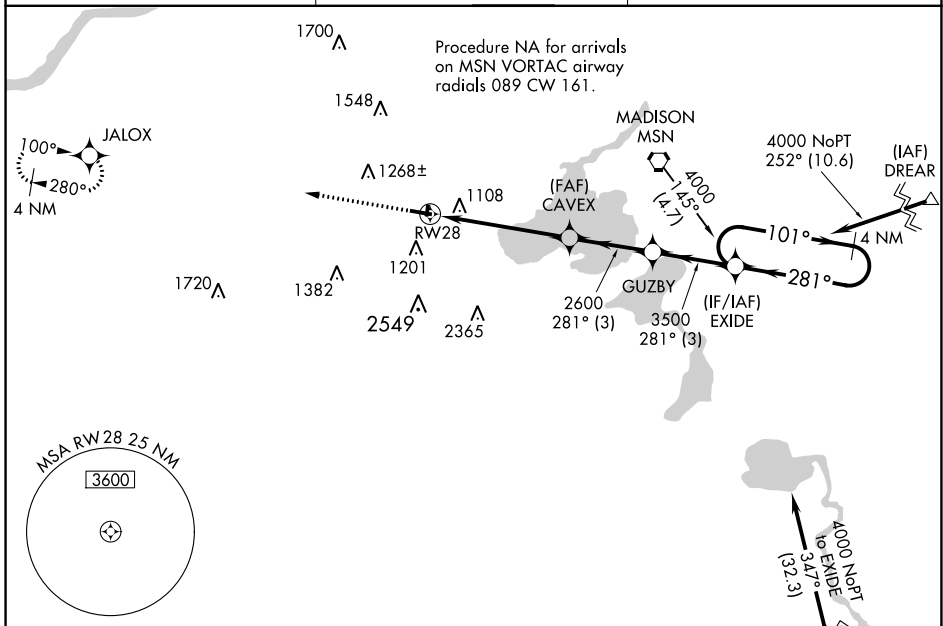
MIDDLETON MUNI/MOREY FLD (C29)

RNP APCH - GPS.

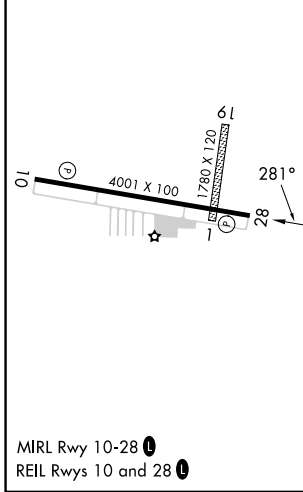
Baro-VNAV NA. Helicopter visibility reduction below 3/4 SM NA. When local altimeter setting not received, use Dane County Rgnl/Truax Fld altimeter setting. VDP NA when using Dane County Rgnl/Truax Fld altimeter setting. Circling NA to Rwy's 1 and 19.

MISSED APPROACH: Climb to 4000 direct JALOX and hold.

AWOS-3 118.675	MADISON APP CON * 135.45 343.7	UNICOM 123.0 (CTAF) 0
--------------------------	--	--

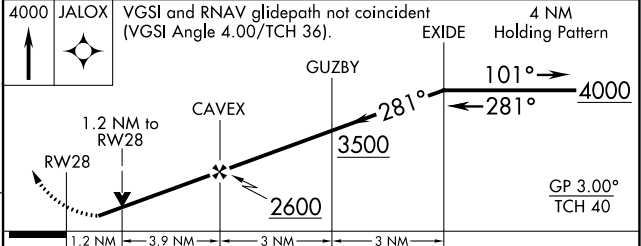


ELEV 928	TDZE 928
-----------------	-----------------



Procedure NA for arrivals at JVL VOR/DME via V97 southeast bound.

(IAF) JANESVILLE JVL



CATEGORY	A	B	C	D
LPV DA	1326-1½	398 (400-1½)		NA
LNAV/VNAV DA	1442-1¾	514 (600-1¾)		NA
LNAV MDA	1480-1	552 (600-1)	1480-1½ 552 (600-1½)	NA
CIRCLING	1560-1 632 (700-1)	1640-1 712 (800-1)	1660-2 732 (800-2)	NA

EC-3, 31 OCT 2024 to 28 NOV 2024

EC-3, 31 OCT 2024 to 28 NOV 2024