

| | | | |
|--|------------------------|-----------------------------|---|
| WAAS CH 93920 W31A | APP CRS 308° | Rwy Idg TDZE Apt Elev | 4010 1123 1123 |
|--|------------------------|-----------------------------|---|

RNAV (GPS) RWY 31

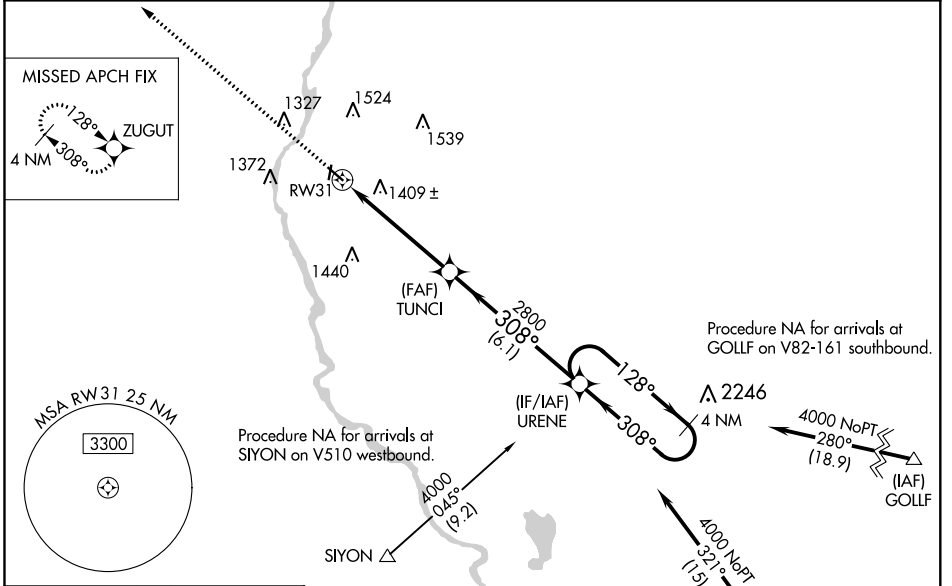
LITTLE FALLS/MORRISON COUNTY-LINDBERGH FIELD (LXL)

RNP APCH.

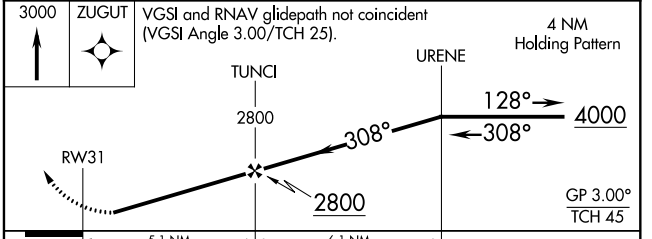
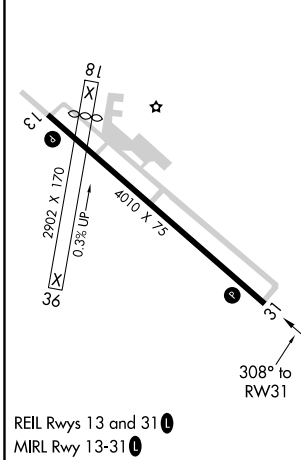
⚠ Baro-VNAV NA when using St Cloud altimeter setting. For uncompensated Baro-VNAV systems, LNAV/VNAV NA below -17°C or above 32°C. Rwy 31 visibility reduction below ¼ SM by helicopters NA. When local altimeter setting not received use St Cloud altimeter setting and increase all DA 76 feet and all MDA 80 feet, increase LPV all Cats and Circling Cat C visibility ½ mile and LNAV/VNAV all Cats, LNAV Cats C/D, and Circling Cat D ¼ mile. Circling Rwy 18, 36 NA.

MISSED APPROACH: Climb to 3000 direct ZUGUT and hold.

| | | | |
|-------------------------|---|-----------------------|---------------------------------|
| AWOS-3 119.45 | MINNEAPOLIS CENTER 118.05 239.0 | GCO 121.725 | UNICOM 122.8 (CTAF) 0 |
|-------------------------|---|-----------------------|---------------------------------|



| | |
|-----------|-----------|
| ELEV 1123 | TDZE 1123 |
|-----------|-----------|



| CATEGORY | A | B | C | D |
|--------------|-----------------------|------------------------------------|--|--|
| LPV DA | | 1517-1 ³ / ₈ | 394 (400-1 ³ / ₈) | |
| LNAV/VNAV DA | | 1749-2 ¹ / ₄ | 626 (700-2 ¹ / ₄) | |
| LNAV MDA | 1660-1 | 537 (600-1) | 1660-1 ¹ / ₂ | 537 (600-1 ¹ / ₂) |
| CIRCLING | 1700-1 577 (600-1) | 1720-1 597 (600-1) | 1720-1 ¹ / ₂ 597 (600-1 ¹ / ₂) | 2000-2 ³ / ₄ 877 (900-2 ³ / ₄) |

RNAV (GPS) RWY 31

NC-1, 17 JUN 2021 to 15 JUL 2021

NC-1, 17 JUN 2021 to 15 JUL 2021