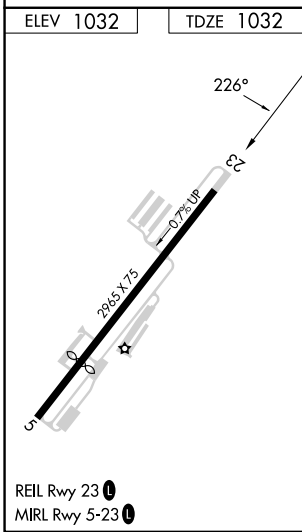
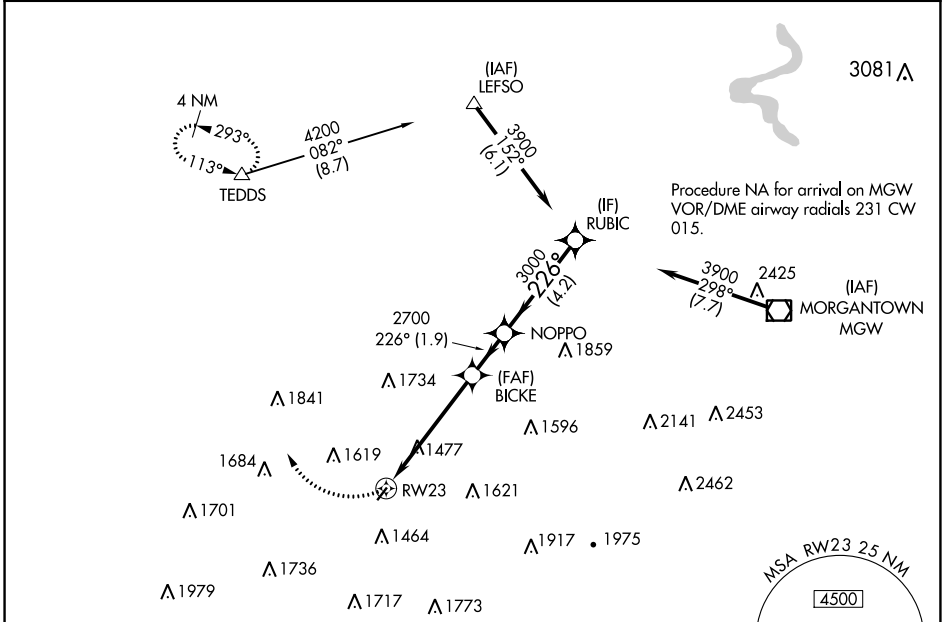


APP CRS 226°	Rwy Idg 2965
TDZE 1032	Apt Elev 1032

RNAV (GPS) RWY 23

FAIRMONT MUNI-FRANKMAN FLD (4G7)

RNP APCH.		MISSED APPROACH: Climbing right turn to 4000 direct TEDDS and hold.	
<p>Procedure NA at night. Rwy 23 helicopter visibility reduction below 1 SM NA.</p>			
CKB ASOS-3 127,825	CLARKSBURG APP CON* 121.15 284.65	CLNC DEL 118.35	UNICOM 122.8 (CTAF)



4000	TEDDS	Visual Segment - Obstacles.			
		NOPPO		RUBIC	
		BICKE	3000		3900
		RW23	2700		
		-5.1 NM-		-1.9 NM-	
		-4.2 NM-			
CATEGORY	A	B	C	D	
LNAV MDA	1840-1 808 (900-1)	1840-1¼ 808 (900-1¼)	1840-2½ 808 (900-2½)	NA	
CIRCLING	1840-1 808 (900-1)	1840-1¼ 808 (900-1¼)	2020-3 988 (1000-3)	NA	

NE-4, 08 AUG 2024 to 05 SEP 2024

NE-4, 08 AUG 2024 to 05 SEP 2024