

WAAS CH 86532 W33A	APP CRS 332°	Rwy Idg TDZE 1125 Apt Elev 1127	3399
--	------------------------	---	-------------

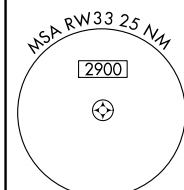
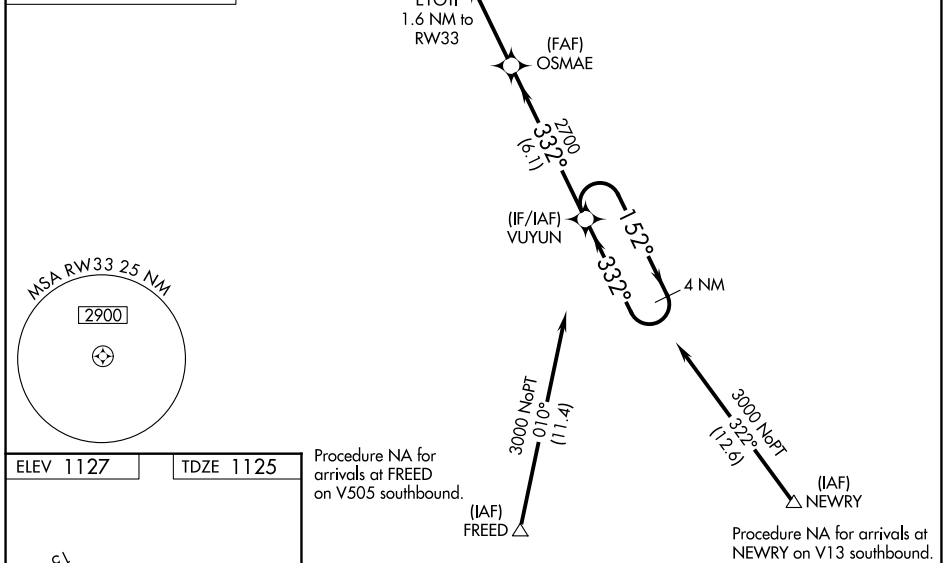
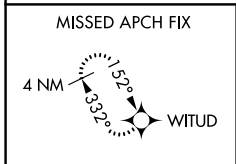
RNAV (GPS) RWY 33

WASECA MUNI/MAYNARD RICHARD STENSRUD FLD (ACQ)

⚠ When local altimeter setting not received, use Owatonna altimeter setting and increase all MDAs 40 feet, increase LP and LNAV Cat C visibility 1/8 mile and Circling Cat C visibility 1/8 mile. DME/DME RNP-0.3 NA. Procedure NA at night. Helicopter visibility reduction below 1 SM NA.

MISSED APPROACH: Climb to 3000 direct WITUD and hold.

AWOS-3 118.425	MINNEAPOLIS CENTER 135.0 306.9	UNICOM 122.8 (CTAF) 0
--------------------------	--	---------------------------------



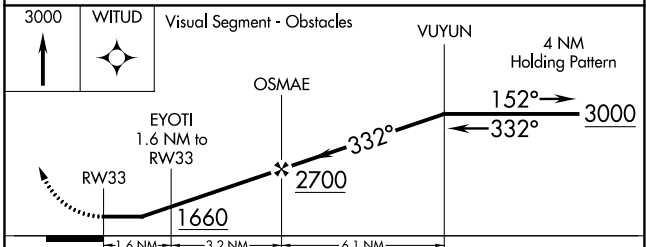
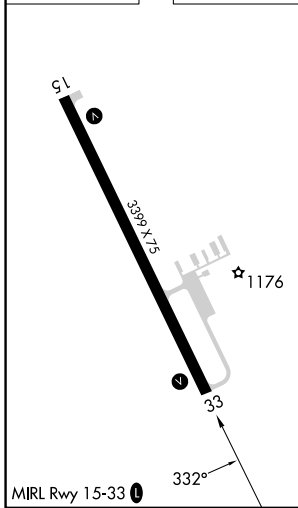
ELEV 1127	TDZE 1125
-----------	-----------

Procedure NA for arrivals at FREED on V505 southbound.

(IAF) FREED

Procedure NA for arrivals at NEWRY on V13 southbound.

(IAF) NEWRY



CATEGORY	A	B	C	D
LP MDA	1480-1	355 (400-1)		NA
LNAV MDA	1520-1	395 (400-1)	1520-1 1/8 395 (400-1 1/8)	NA
C CIRCLING	1560-1 433 (500-1)	1620-1 493 (500-1)	1760-1 1/2 633 (700-1 1/2)	NA

RNAV (GPS) RWY 33

NC-1, 03 OCT 2024 to 31 OCT 2024

NC-1, 03 OCT 2024 to 31 OCT 2024