

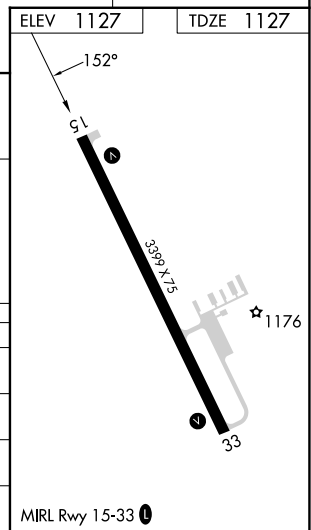
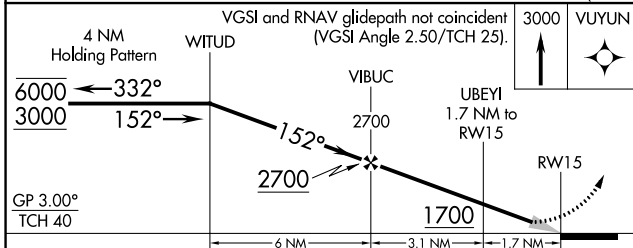
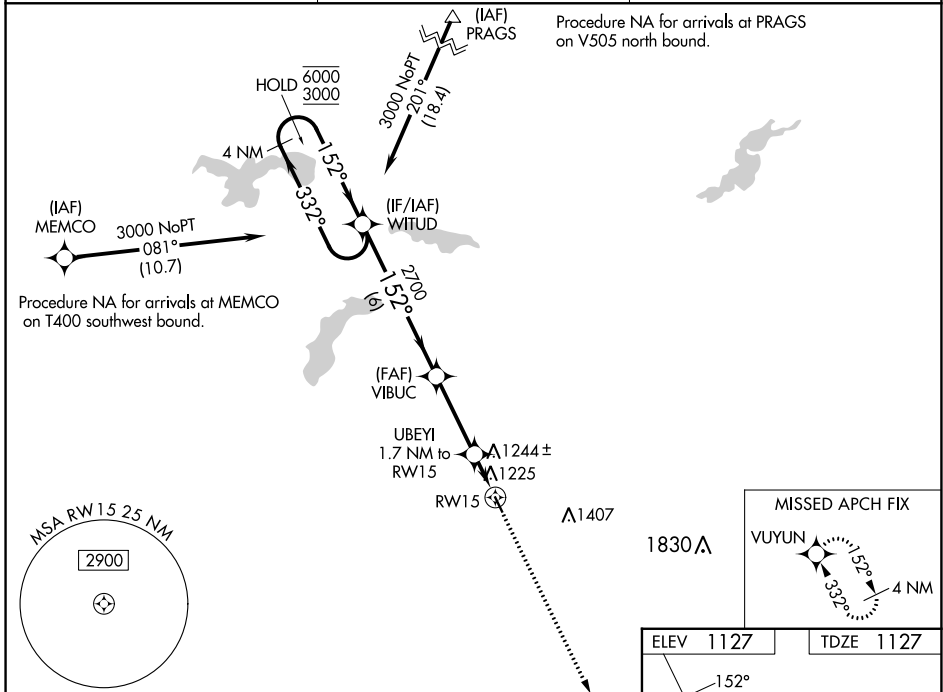
WAAS CH 70532 W15A	APP CRS 152°	Rwy Idg TDZE Apt Elev	3399 1127 1127
--	------------------------	-----------------------------	---

RNAV (GPS) RWY 15

WASECA MUNI/MAYNARD RICHARD STENSRUD FLD (ACQ)

RNP APCH - GPS.	MISSED APPROACH: Climb to 3000 direct VUYUN and hold.
<p>▼ For uncompensated Baro-VNAV systems, LNAV/VNAV NA below -17°C or above 54°C. Helicopter visibility reduction below 1 SM NA. Procedure NA at night.</p>	

AWOS-3 118.425	MINNEAPOLIS CENTER 135.0 306.9	UNICOM 122.8 (CTAF) 0
--------------------------	--	---------------------------------



CATEGORY	A	B	C	D
LPV DA	1377-1 250 (300-1)			NA
LNAV/VNAV DA	1516-1½ 389 (400-1½)			NA
LNAV MDA	1540-1	413 (500-1)	1540-1½ 413 (500-1½)	NA
CIRCLING	1560-1 433 (500-1)	1620-1 493 (500-1)	1760-1¾ 633 (700-1¾)	NA

RNAV (GPS) RWY 15

NC-1, 03 OCT 2024 to 31 OCT 2024

NC-1, 03 OCT 2024 to 31 OCT 2024