

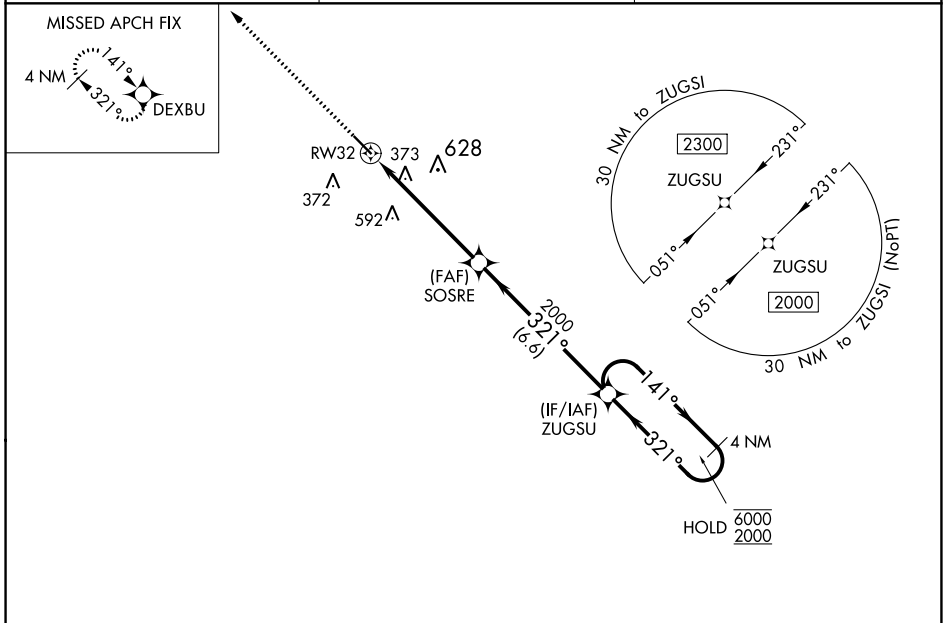
WAAS CH <b>61318</b> <b>W32A</b>	APP CRS <b>321°</b>	Rwy Idg <b>4999</b> TDZE <b>186</b> Apt Elev <b>187</b>
--	------------------------	---

# RNAV (GPS) RWY 32

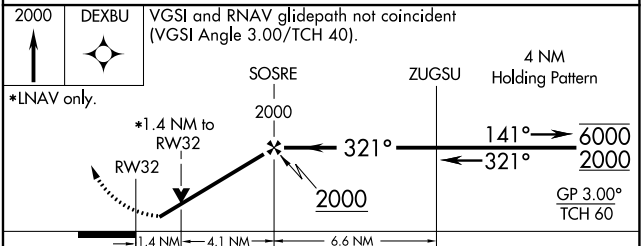
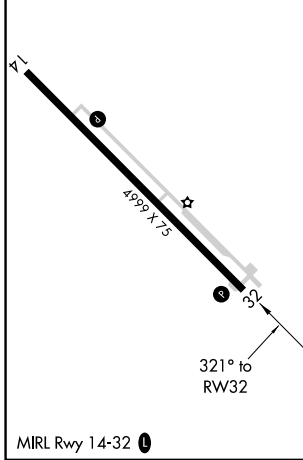
HOMERVILLE (HOE)

RNP APCH.	MISSED APPROACH: Climb to 2000 direct DEXBU and hold.
-----------	---

AWOS-3 <b>118.725</b>	VALDOSTA APP CON ★ <b>126.6 285.6</b>	CTAF <b>122.9</b>
--------------------------	--	----------------------



ELEV <b>187</b>	TDZE <b>186</b>
-----------------	-----------------



CATEGORY	A	B	C	D
LPV DA	491-1 305 (400-1)			
LNAV/VNAV DA	672-1 <sup>3</sup> / <sub>8</sub> 486 (500-1 <sup>3</sup> / <sub>8</sub> )			
LNAV MDA	680-1	494 (500-1)	680-1 <sup>3</sup> / <sub>8</sub>	494 (500-1 <sup>3</sup> / <sub>8</sub> )
<input checked="" type="checkbox"/> CIRCLING	680-1 493 (500-1)	740-1 553 (600-1)	940-2 <sup>1</sup> / <sub>4</sub> 753 (800-2 <sup>1</sup> / <sub>4</sub> )	940-2 <sup>1</sup> / <sub>2</sub> 753 (800-2 <sup>1</sup> / <sub>2</sub> )

SE-4, 31 OCT 2024 to 28 NOV 2024

SE-4, 31 OCT 2024 to 28 NOV 2024