

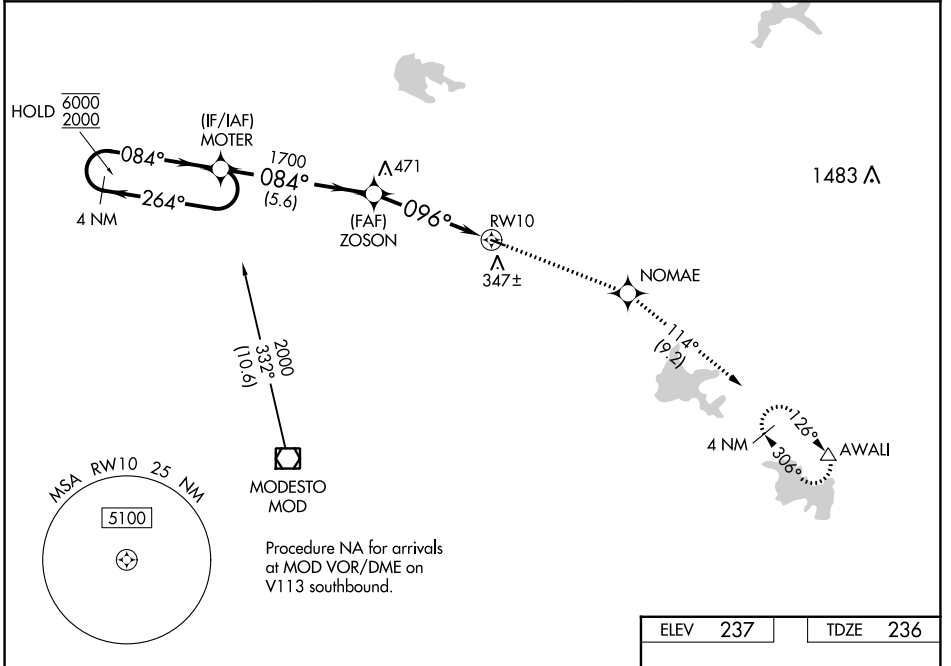
WAAS CH 42524 W10A	APP CRS 096°	Rwy Idg TDZE Apt Elev	3013 236 237
--	------------------------	-----------------------------	---

RNAV (GPS) RWY 10

OAKDALE (O27)

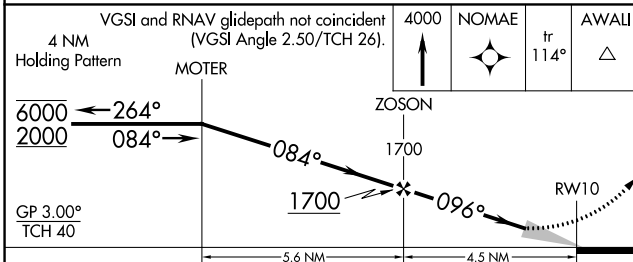
RNP APCH-GPS.		MISSED APPROACH: Climb to 4000 direct NOMAE and on track 114° to AWALI and hold, continue climb-in-hold to 4000.
▼ NA	Baro-VNAV NA. Use Modesto altimeter setting; when not received, use Stockton Metro altimeter setting: increase LPV DA to 627 feet and all visibilities 1/8 SM; increase LNAV/VNAV DA to 588 feet and all visibilities 1/8 SM; increase all MDAs 40 feet and LNAV Cat C visibility 1/8 SM.	

MOD ASOS 127.7	NORCAL APP CON 125.1 363.2	UNICOM 122.8 (CTAF) 0
--------------------------	--------------------------------------	---------------------------------



SW-2, 08 AUG 2024 to 05 SEP 2024

SW-2, 08 AUG 2024 to 05 SEP 2024



ELEV	237	TDZE	236
REIL Rwy 10 and 28 0			
MIRL Rwy 10-28 0			

CATEGORY	A	B	C	D
LPV DA	593-1 357 (400-1)			NA
LNAV/VNAV DA	554-7/8 318 (400-7/8)			NA
LNAV MDA	760-1	524 (600-1)	760-1 1/2 524 (600-1 1/2)	NA
CIRCLING	760-1	820-1	920-2	NA
	523 (600-1)	583 (600-1)	683 (700-2)	