

NDB EOE	APP CRS	Rwy Idg	4001
278	213°	TDZE	570
		Apt Elev	570

NDB RWY 22

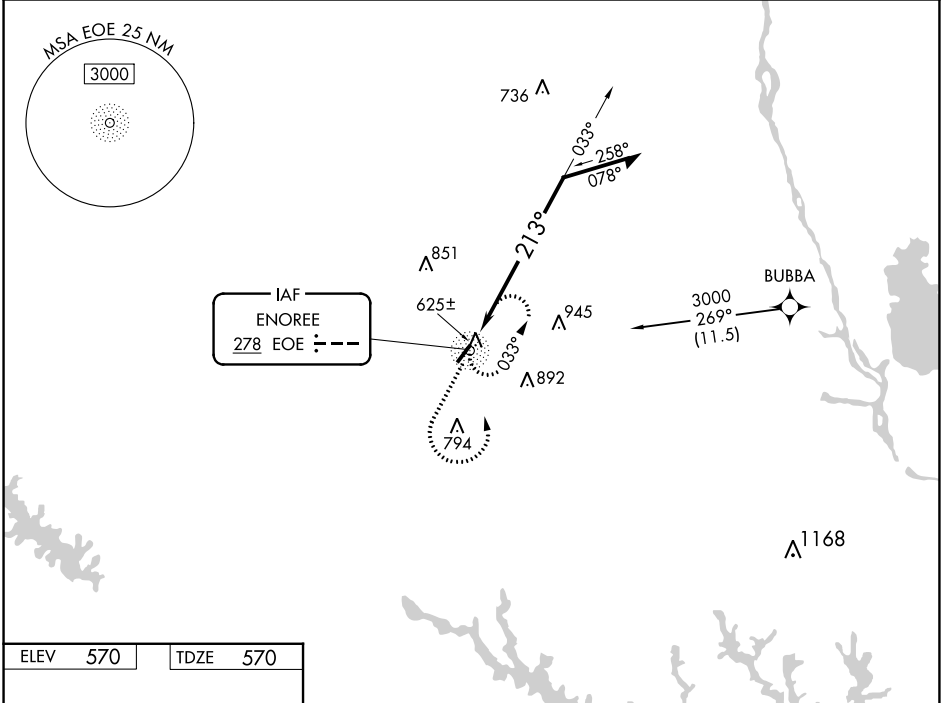
NEWBERRY COUNTY (EOE)

RNAV 1 - GPS or RADAR required for procedure entry.

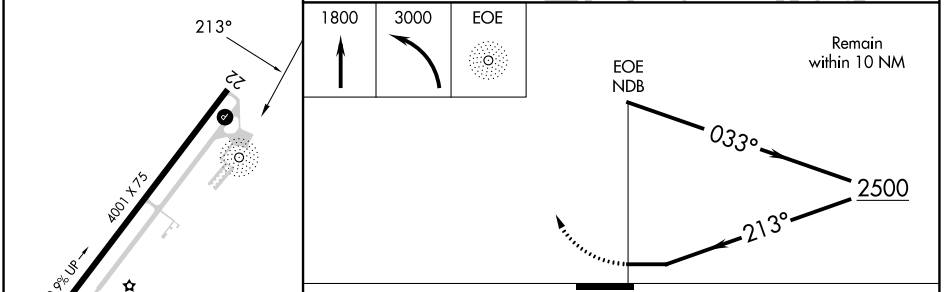
▼ Rwy 22 helicopter visibility reduction below 3/4 SM NA. When local altimeter setting not received, use Greenwood altimeter setting and increase all MDAs 80 feet.

MISSED APPROACH: Climb to 1800 then climbing left turn to 3000 direct EOE NDB and hold.

AWOS-3 124.275	COLUMBIA APP CON 133.4 285.6	UNICOM 122.8 (CTAF)
--------------------------	--	-------------------------------



ELEV 570	TDZE 570
----------	----------



CATEGORY	A	B	C	D
S-22	1100-1	530 (600-1)	NA	
C CIRCLING	1100-1	1160-1	NA	
	530 (600-1)	590 (600-1)		

SE-2, 31 OCT 2024 to 28 NOV 2024

SE-2, 31 OCT 2024 to 28 NOV 2024