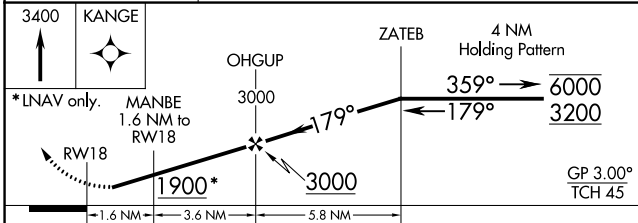
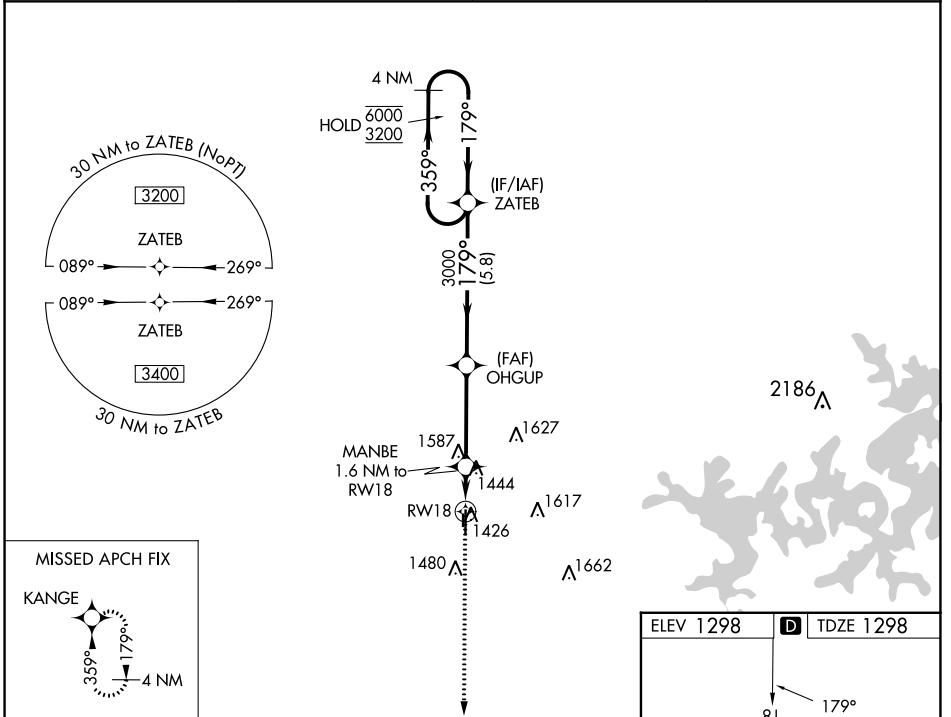


WAAS CH 77830 W18A	APP CRS 179°	Rwy Idg TDZE 1298 Apt Elev 1298	4196
----------------------------------------	------------------------	-----------------------------------------------------	-------------

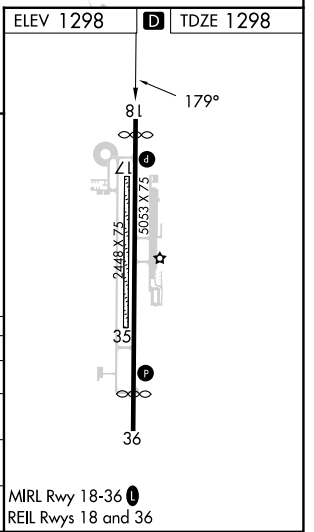
RNAV (GPS) RWY 18

BENTONVILLE MUNI/LOUISE M THADEN FLD (VBT)

RNP APCH.		MISSED APPROACH: Climb to 3400 direct KANGE and hold.	
<p>⚠ Circling NA to Rwy 17 and 35. Rwy 18 helicopter visibility reduction below 3/4 SM NA. For uncompensated Baro-VNAV systems, LNAV/VNAV NA below -17°C or above 54°C.</p>			
AWOS-3PT 134.975	RAZORBACK APP CON ★ 121.0 (WEST) 244.575	CLNC DEL 121.05 263.125	UNICOM 122.975 (CTAF) ①



CATEGORY	A	B	C	D
LPV DA		1548-1	250 (300-1)	
LNAV/VNAV DA		1688-1½	390 (400-1½)	
LNAV MDA	1700-1	402 (500-1)	1700-1½	402 (500-1½)
ⓐ CIRCLING	1780-1	482 (500-1)	1920-1¾ 622 (700-1¾)	1940-2 642 (700-2)



SC-1, 31 OCT 2024 to 28 NOV 2024

SC-1, 31 OCT 2024 to 28 NOV 2024

RNAV (GPS) RWY 18