

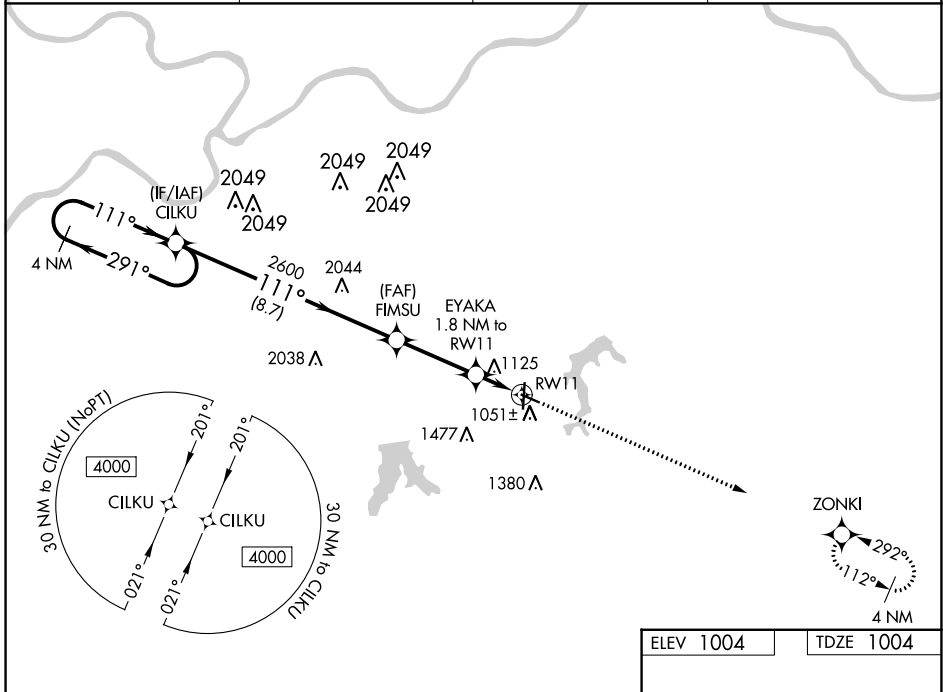
WAAS CH <b>99405</b> <b>W11A</b>	APP CRS <b>111°</b>	Rwy Idg <b>4000</b> TDZE <b>1004</b> Apt Elev <b>1004</b>
--	------------------------	---

# RNAV (GPS) RWY 11

LEE'S SUMMIT MUNI (LXT)

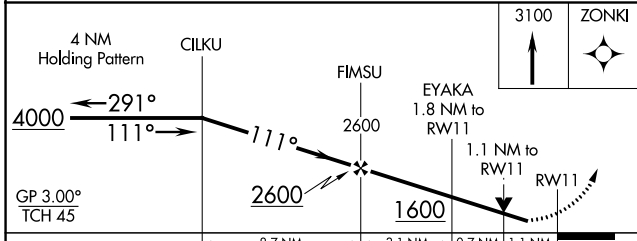
RNP APCH - GPS.		MISSED APPROACH: Climb to 3100 direct ZONKI and hold.
<p>▼ For uncompensated Baro-VNAV systems, LNAV/VNAV NA below -17°C or above 54°C. Rwy 11 helicopter visibility reduction below ¾ SM NA.</p>		

ASOS <b>124.175</b>	KANSAS CITY APP CON <b>118.4 307.35</b>	CLNC DEL <b>118.45</b>	UNICOM <b>122.8</b> (CTAF) <b>1</b>
------------------------	--	---------------------------	--

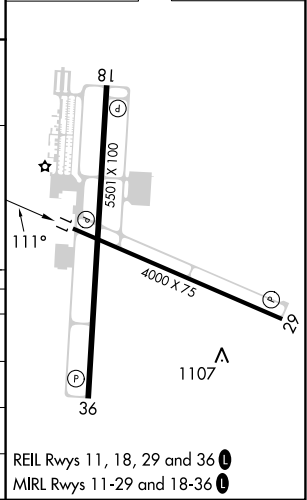


NC-3, 31 OCT 2024 to 28 NOV 2024

NC-3, 31 OCT 2024 to 28 NOV 2024



ELEV 1004	TDZE 1004
-----------	-----------



CATEGORY	A	B	C	D
LPV DA		1254-1	250 (300-1)	
LNAV/VNAV DA		1381-1¼	377 (400-1¼)	
LNAV MDA		1380-1	376 (400-1)	
CIRCLING	1440-1	1540-1	1780-2¼	1780-2½
	436 (500-1)	536 (600-1)	776 (800-2¼)	776 (800-2½)

REIL Rws 11, 18, 29 and 36 **1**  
MIRL Rws 11-29 and 18-36 **1**